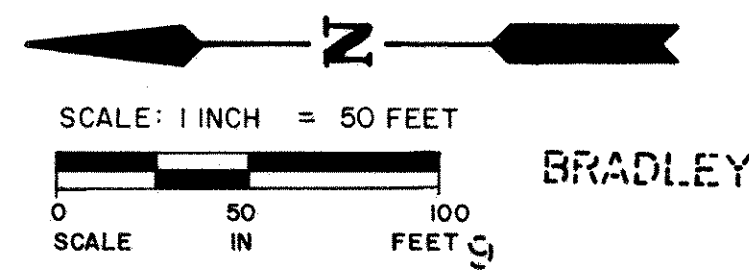


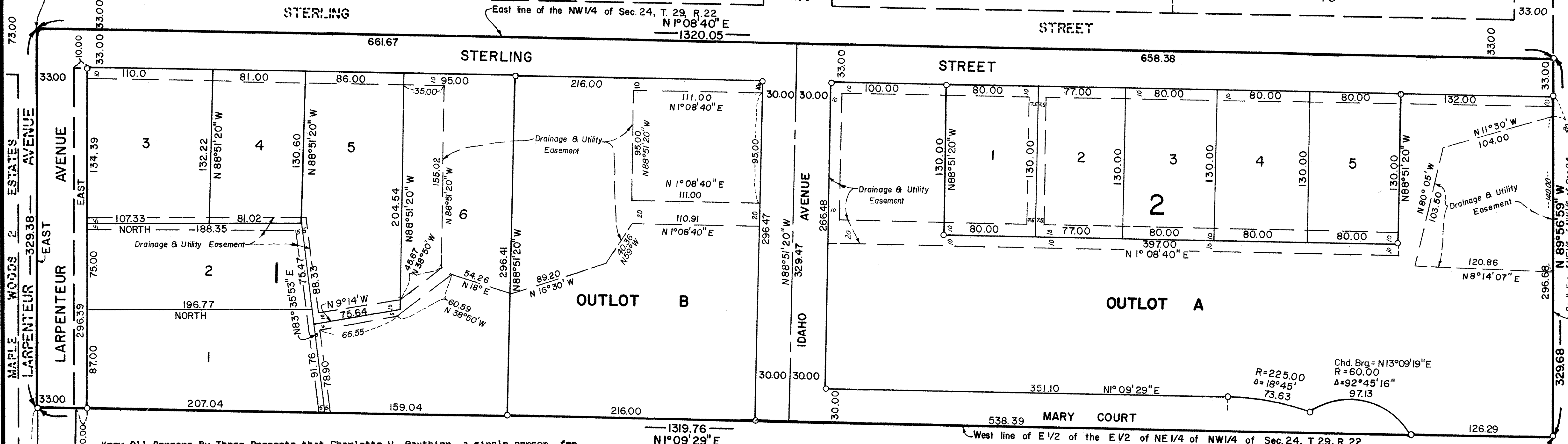
CAVES STERLING STREET ADDITION

O Denotes Iron Monument Set
Bearings Are On An Assumed Datum

Located in the Northwest quarter of
Section 24, Township 29 North, Range 22
West



NW/4 Cor. of Sec. 24, T. 29, R. 22
reference monuments 33 feet
South and 33 feet
East from the actual
section corner



Know All Persons By These Presents that Charlotte V. Gauthier, a single person, fee owner; and Ed Cave and Sons, Inc., a Minnesota Corporation, contract purchaser, of the following described property situated in the City of Maplewood, Ramsey County, Minnesota:

The East half of the East half of the Northeast quarter of the Northwest quarter of Section 24, Township 29, Range 22, Ramsey County, Minnesota.

Have caused the same to be surveyed, platted, and known as CAVES STERLING STREET ADDITION and do hereby dedicate to the public for public use forever the avenues, street, court and drainage and utility easements as shown on the plat.

Charlotte V. Gauthier, a single person, has hereunto set her hand this 13th day of SEPT, 1986.

Signed:
Charlotte V. Gauthier
Charlotte V. Gauthier

Ed Cave and Sons, Inc., a Minnesota Corporation, has caused these presents to be signed by its proper officers this 13th day of SEPT, 1986.

Signed: Ed Cave and Sons, Inc.
Samuel S. Cave Samuel S. Cave, President
Diane C. Cave Diane C. Cave, Secretary

STATE OF MINNESOTA
COUNTY OF RAMSEY

The foregoing instrument was acknowledged before me this 11th day of Sept, 1986, by Charlotte V. Gauthier, a single person.

GAIL L. SCHNEIDER
NOTARY PUBLIC - MINNESOTA
RAMSEY COUNTY
My Commission Expires MAR. 13, 1991

Gail L. Schneider
Notary Public, Ramsey County, Minnesota
My Commission Expires: 3-13-91

STATE OF MINNESOTA
COUNTY OF RAMSEY

The foregoing instrument was acknowledged before me this 15th day of SEPT, 1986, by Samuel S. Cave, President and by Diane C. Cave, Secretary of Ed Cave and Sons, Inc., a Minnesota Corporation, on behalf of the corporation.

GAIL L. SCHNEIDER
NOTARY PUBLIC - MINNESOTA
RAMSEY COUNTY
My Commission Expires MAR. 13, 1991

Gail L. Schneider
Notary Public, Ramsey County, Minnesota
My Commission Expires: 3-13-91

I Rodney H. Halvorson, hereby certify that I have surveyed and platted the property described in the dedication of this plat as CAVES STERLING STREET ADDITION; that this plat is a correct representation of said survey; that all distances are correctly shown on the plat; that all monuments have been correctly placed in the ground as shown; that the outside boundary lines are correctly designated on the plat; and there are no wetlands, or public highways other than as shown thereon.

Rodney H. Halvorson
Rodney H. Halvorson, Land Surveyor
Minnesota Registration No. 10947

STATE OF MINNESOTA
COUNTY OF HENNEPIN

The Surveyor's Certificate was subscribed and sworn to before me, a Notary Public, this 2nd day of September, 1986.

LAWRENCE J. OLSON
NOTARY PUBLIC - MINNESOTA
HENNEPIN COUNTY
My Commission Expires JAN. 9, 1988

Lawrence J. Olson
Notary Public, Hennepin County, Minnesota
My Commission Expires: 1-9-88

Approved and accepted by the City Council of the City of Maplewood, Minnesota, this 10th day of September, 1986.

John Brewer Mayor
Louise E. Anselmi Clerk

Taxes for the year 1986 on land described herein paid, no delinquent taxes and transfer entered, this 11th day of September, 1986.

Lou McKenna Director
Department of Property Taxation
By Stephanie Cowley Deputy

Pursuant to Chapter 7, Minnesota Laws of 1976, this plat has been reviewed and approved, this 30th day of September, 1986, and the conditions of Minnesota Statutes, Section 505.03, Subdivision 2, have been fulfilled.

David D. Claypool
David D. Claypool
Acting Ramsey County Surveyor

County Recorder
County of Ramsey
State of Minnesota

I hereby certify that this plat of CAVES STERLING STREET ADDITION was filed in this office this 30 day of September, 1986, at 4:03 o'clock P.M. and was filed in Book 100 of Plats, Page 10, as Document No. 2334758.

By _____ Deputy
John C. McLaughlin, County Recorder