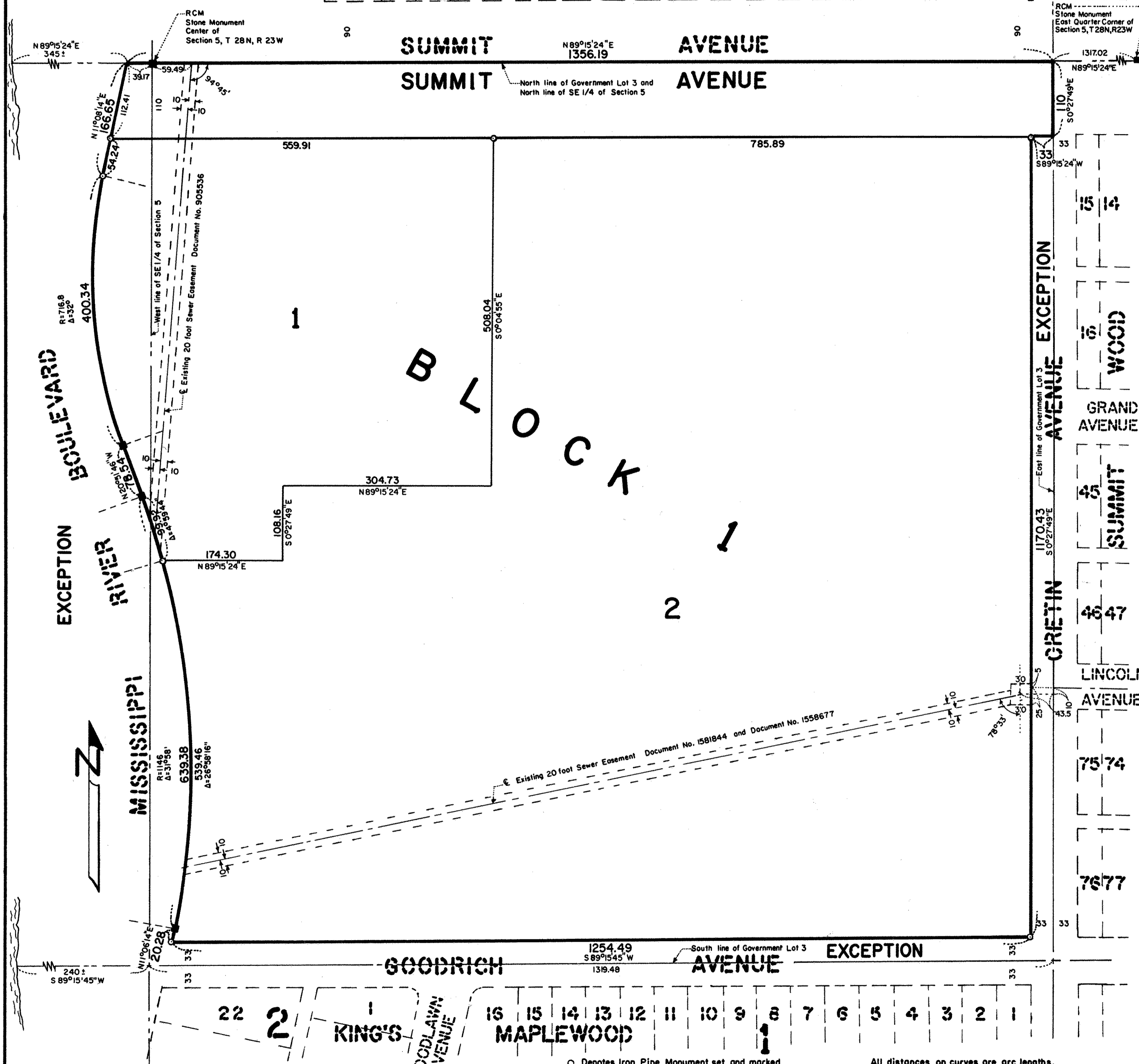


# ST. PAUL SEMINARY ADDITION

CITY OF SAINT PAUL  
RAMSEY COUNTY, MINNESOTA

## E. J. KINGSTON'S SUBDIVISION

1 2 3 4 5 6 7 8 9 10 11 12 13 14 15 16 17 18 19 20



Know All Persons By These Presents that The St. Paul Seminary, a Minnesota Nonprofit Corporation and The Archdiocese of Saint Paul and Minneapolis, a Minnesota Diocesan Corporation, owners of the following described property situated in the City of Saint Paul, Ramsey County, Minnesota:

Government Lot 3, Section 5, Township 28 North, Range 23 West, except the East 33.0 feet thereof (except Summit Ave.), and except the South 33.0 feet thereof, and except the strip on the West side thereof taken by the City of St. Paul for Park and Boulevard.

Have caused the same to be surveyed, platted and known as ST. PAUL SEMINARY ADDITION and do hereby dedicate to the public for public use forever the avenue as shown on the plat.

The St. Paul Seminary, a Minnesota Nonprofit Corporation, has caused these presents to be signed by its proper officers and its corporate seal to be hereunto affixed this 17<sup>th</sup> day of June, 1986.

Signed: The St. Paul Seminary, a Minnesota Nonprofit Corporation  
John R. Roach its Chairman of the Board of Trustees  
Charles L. Franke its President

The Archdiocese of Saint Paul and Minneapolis, a Minnesota Diocesan Corporation, has caused these presents to be signed by its proper officers and its corporate seal to be hereunto affixed this 17<sup>th</sup> day of June, 1986.

Signed: The Archdiocese of Saint Paul and Minneapolis, a Minnesota Diocesan Corporation  
John R. Roach its President Robert D. Carlson its Secretary

STATE OF MINNESOTA)  
 COUNTY OF RAMSEY)

The foregoing instrument was acknowledged before me this 17<sup>th</sup> day of June, 1986, by JOHN R. ROACH, Chairman of the Board of Trustees and by CHARLES L. FRANKE, President of the St. Paul Seminary, a Minnesota Nonprofit Corporation, on behalf of the corporation.

Timothy P. Quinn  
 Notary Public, RAMSEY County, Minnesota  
 My Commission Expires 7/9/90

STATE OF MINNESOTA)  
 COUNTY OF RAMSEY)

The foregoing instrument was acknowledged before me this 17<sup>th</sup> day of June, 1986, by JOHN R. ROACH President and by ROBERT D. CARLSON, Secretary of The Archdiocese of Saint Paul and Minneapolis, a Minnesota Diocesan Corporation, on behalf of the corporation.

Timothy P. Quinn  
 Notary Public, RAMSEY County, Minnesota  
 My Commission Expires 7/9/90

I, Donald W. Schmidt, hereby certify that I have surveyed and platted the property described in the dedication of this plat as ST. PAUL SEMINARY ADDITION; that this plat is a correct representation of said survey; that all distances are correctly shown on the plat; that all monuments have been correctly placed in the ground as shown; that the outside boundary lines are correctly designated on the plat; and there are no wet lands, public highways or easements other than as shown thereon.

Donald W. Schmidt  
 Donald W. Schmidt, Land Surveyor  
 Minnesota Registration No. 10459

STATE OF MINNESOTA)  
 COUNTY OF RAMSEY)

The Surveyor's Certificate was subscribed and sworn to before me, a Notary Public, this 17<sup>th</sup> day of June, 1986.

Cynthia L. Rist  
 Notary Public, RAMSEY County, Minnesota  
 My Commission Expires 11-11-91

Approved and accepted by the City Council of the City of Saint Paul, Minnesota  
 this 26<sup>th</sup> day of JUNE, 1986.  
Robert D. Olson  
 Clerk

Taxes for the year 1986 on land described herein paid, no delinquent taxes and transfer entered this 7<sup>th</sup> day of July, 1986.  
Law McKenna Director By R. J. Sef Deputy  
 Department of Property Taxation

Pursuant to Chapter 7, Minnesota Laws of 1976, this plat has been reviewed and approved, this 17<sup>th</sup> day of June, 1986, and the conditions of Minnesota Statutes, Section 505.03, Subdivision 2, have been fulfilled.

David D. Claypool  
 Acting Ramsey County Surveyor

County Recorder, County of Ramsey, State of Minnesota  
 I hereby certify that this plat of ST. PAUL SEMINARY ADDITION, was filed in this office this 8<sup>th</sup> day of JULY, 1986, at 8:17 o'clock A.M. and was filed in Book 99 of Plats, Page 30, as Document No. 2320821.

John C. McLaughlin, County Recorder By \_\_\_\_\_ Deputy

GEORGI-SCHMIDT & ASSOC. INC.  
 Land Surveyors  
 3092 N. Lexington Ave. 483-4408  
 ROSEVILLE, MINNESOTA 55113

SCALE: 1 inch=100 feet  
 100 50 0 100 200  
 SCALE IN FEET

○ Denotes Iron Pipe Monument set and marked with Registration Number 10459.  
 ■ Denotes Stone Monument found in place.  
 All distances are to hundredths of a foot; thus, 33 denotes 33.00 feet.

All distances on curves are arc lengths.  
 The North line of Government Lot 3, Section 5, T 28N, R 23N is assumed as bearing N 89°15'24"E.