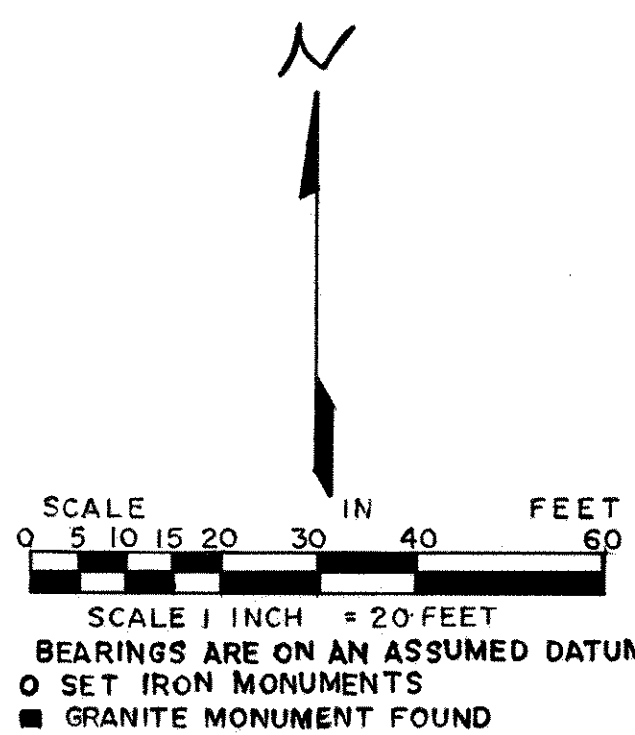
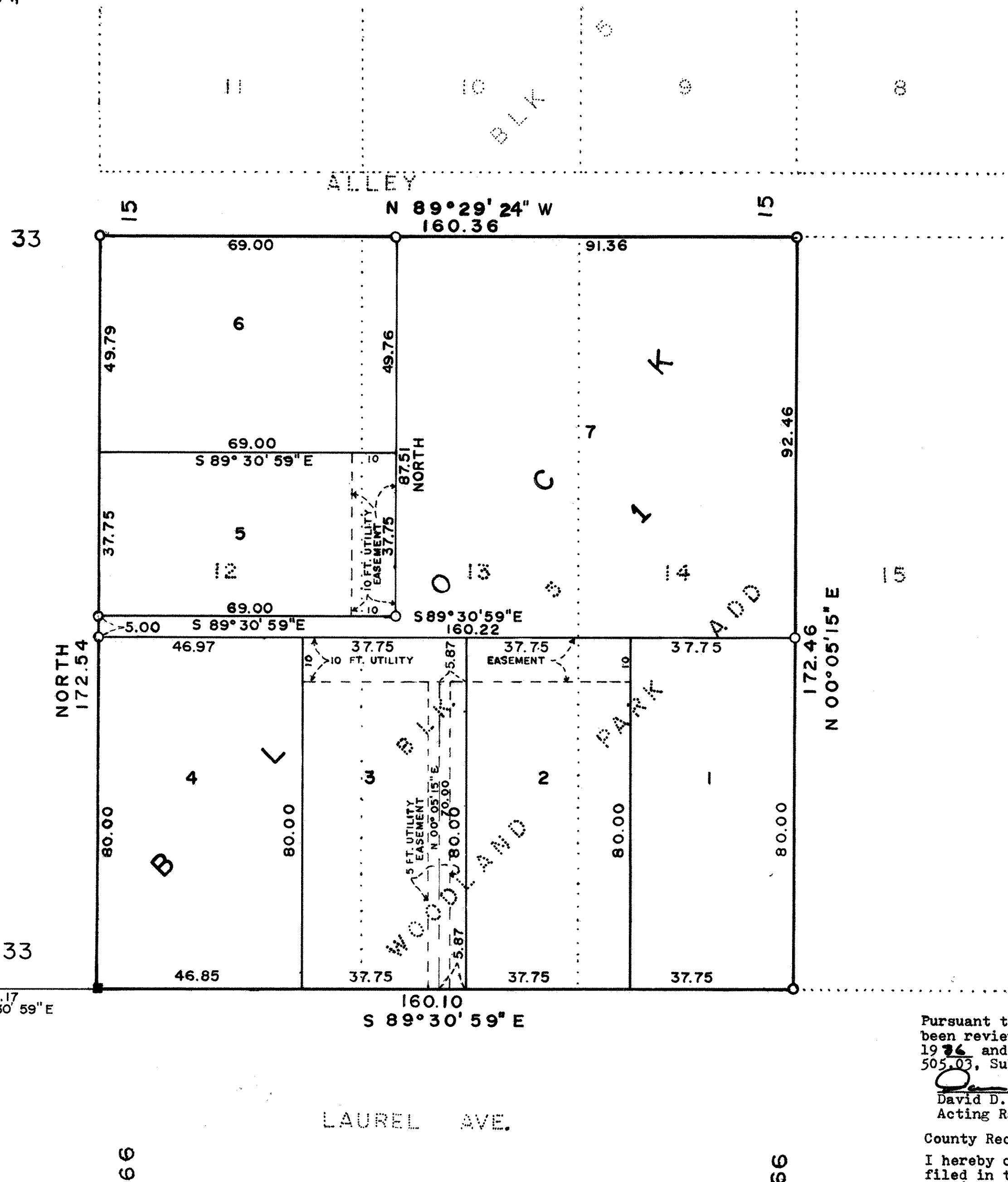


KENT AND LAUREL

RAMSEY COUNTY
GRANITE MONUMENT
NW CORNER SEC. 1,
T.28, R.23



LOCATED IN NW 1/4, SECTION 1,
TOWNSHIP 28, RANGE 23.

Know All Persons By These Presents that Richard Strong and Kathleen A. Strong, husband and wife, Donovan McCain, a single person, and Randall Schold, a single person, as joint tenants, and not as tenants in common, with full rights of survivorship, owners, and First Bank Grand, National Association, a National Banking Association, mortgagee, of the following described property situated in the City of Saint Paul, County of Ramsey, State of Minnesota:

Lots Twelve (12), Thirteen (13) and Fourteen (14), Block Five (5), Woodland Park Addition to the City of Saint Paul, according to the plat thereof on file and of record in the office of the County Recorder, in and for said County and State.

Have caused the same to be surveyed, platted and known as KENT AND LAUREL and do hereby dedicate to the public for public use forever the utility easements as shown on the plat.

In witness whereof said Richard Strong and Kathleen A. Strong, husband and wife, Donovan McCain, a single person, and Randall Schold, a single person, have hereunto set their hands this 14th day of APRIL, 1986.

Signed: Richard Strong
Richard Strong
Kathleen A. Strong
Kathleen A. Strong
Donovan McCain
Donovan McCain
Randall Schold
Randall Schold

In witness whereof said First Bank Grand, National Association, a National Banking Association, has caused these presents to be signed by its proper officers and its corporate seal to be hereunto affixed this 14th day of April, 1986.

Signed: First Bank Grand, National Association
David Jones its Asst. V.P.
Anna M.D. its A.V.P.

STATE OF MINNESOTA
COUNTY OF HENNEPIN
The foregoing instrument was acknowledged before me this 14th day of APRIL, 1986, by Richard Strong and Kathleen A. Strong, husband and wife, by Donovan McCain, a single person, and by Randall Schold, a single person.
Donna D. Belden
Notary Public, HENNEPIN County,
My Commission Expires Sept 16, 1990

STATE OF MINNESOTA
COUNTY OF HENNEPIN
The foregoing instrument was acknowledged before me this 14th day of APRIL, 1986 by VANCE LUCAS, Asst. V.P., and by BRUCE N. DAVIS, Asst. V.P. of First Bank Grand, National Association, a National Banking Association, on behalf of the association.
Donna D. Belden
Notary Public, HENNEPIN County,
My Commission Expires Sept 16, 1990

I, Charles E. Dahlgren, hereby certify that I have surveyed and platted the property described in the dedication of this plat as KENT AND LAUREL; that this plat is a correct representation of said survey; that all distances are correctly shown on the plat; that all monuments have been correctly placed in the ground as shown; that the outside boundary lines are correctly designated on the plat and there are no wetlands, easements or public highways other than as shown thereon.
Charles E. Dahlgren
Charles E. Dahlgren, Land Surveyor
Minnesota Registration No. 3073

STATE OF MINNESOTA
COUNTY OF WASHINGTON
The Surveyor's Certificate was subscribed and sworn to before me, a Notary Public, this 10th day of April, 1986.
Leonard C. Muench
Notary Public,
My Commission Expires _____
Approved and accepted by the City Council of the City of Saint Paul, Minnesota, this 1st day of May, 1986.
Carol A. Fontaine
Clerk

Taxes for the year 1986 on land described herein paid, no delinquent taxes and transfer entered, this 13th day of MAY, 1986.
Tom McKenna Director
Department of Property Taxation
By Valerie Spichal Deputy

Pursuant to Chapter 7, Minnesota Laws of 1976, this plat has been reviewed and approved, this 13th day of MAY, 1986 and the conditions of Minnesota Statutes, Section 505.03, Subdivision 2, have been fulfilled.
David D. Claypool
David D. Claypool
Acting Ramsey County Surveyor
County Recorder, County of Ramsey, State of Minnesota
I hereby certify that this plat of KENT AND LAUREL was filed in this office this 14th day of MAY, 1986, at 9:56 o'clock A. M. and was filed in Book 99 of Plats, Page 22, as Document No. 2313849.

John C. McLaughlin County Recorder
By _____ Deputy

W. 1/4 CORNER
SEC. 1, T.28, R.23
PER CITY OF ST. PAUL
TIES OF 1985
NO MONUMENT FOUND