

KARELS AND WITT PARK NO. 2

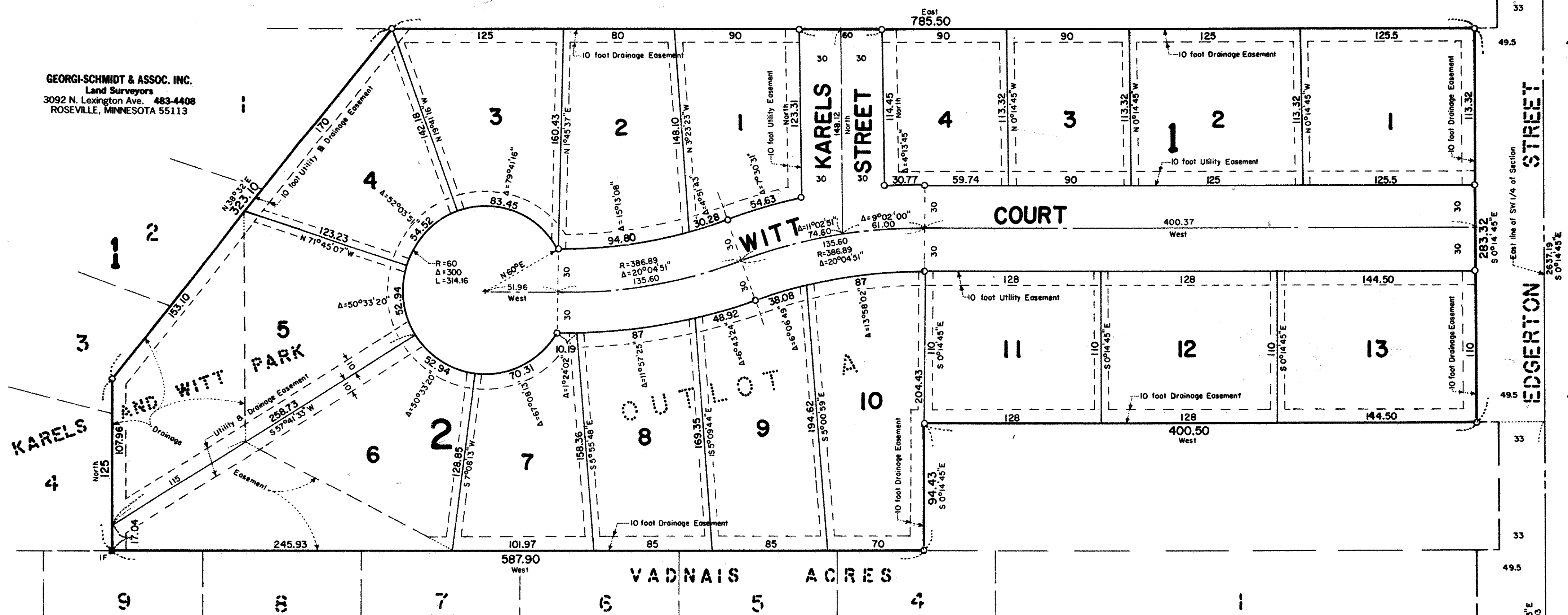
CITY OF VADNAIS HEIGHTS
RAMSEY COUNTY, MINNESOTA



SCALE: 1 inch = 50 feet

○ Denotes Iron Pipe Monument set and marked with Registration Number 10459.
● Denotes Iron Pipe Monument found in place.
All distances are to hundredths of a foot; thus, 90 denotes 90.00 feet.
All distances on curves are arc lengths.
East line of SW 1/4 of Section 32, T 30N, R 22W, is assumed as bearing S 0°14'45" E.
Drainage easement 10 feet in width centered on all side lot lines except as shown.

GEORGI-SCHMIDT & ASSOC. INC.
Land Surveyors
3092 N. Lexington Ave. 483-4408
ROSEVILLE, MINNESOTA 55113



Know All Persons By These Presents that Eugene Edward Karels and Patricia Josephine Karels, husband and wife, and Robert C. Witt and Kay R. Witt, husband and wife, owners of the following described property situated in the City of Vadnais Heights, Ramsey County, Minnesota:

Outlot A, Karels and Witt Park.
Have caused the same to be surveyed, platted and known as KARELS AND WITT PARK NO. 2 and do hereby dedicate to the public for public use forever the court, street and utility and drainage easements as shown on the plat.
Have hereunto set our hands this 14th day of January, 1986.
Signed: Eugene Edward Karels, Patricia Josephine Karels
Eugene Edward Karels, Patricia Josephine Karels
Have hereunto set our hands this 14th day of January, 1986.
Signed: Robert C. Witt, Kay R. Witt
Robert C. Witt, Kay R. Witt

I, Donald W. Schmidt, hereby certify that I have surveyed and platted the property described in the dedication of this plat as KARELS AND WITT PARK NO. 2; that this plat is a correct representation of said survey; that all distances are correctly shown on the plat; that all monuments have been correctly placed in the ground as shown; that the outside boundary lines are correctly designated on the plat; and there are no wet lands, easements or public highways other than as shown thereon.

Donald W. Schmidt
Donald W. Schmidt, Land Surveyor
Minnesota Registration No. 10459

STATE OF MINNESOTA)
COUNTY OF RAMSEY)

The Surveyor's Certificate was subscribed and sworn to before me, a Notary Public, this 2nd day of December, 1985.

Alan John Irwin
Alan John Irwin
Notary Public, Anoka County, Minnesota
My Commission Expires May 23, 1986

STATE OF MINNESOTA)
COUNTY OF RAMSEY)

The foregoing instrument was acknowledged before me this 14th day of January, 1986, by Eugene Edward Karels and Patricia Josephine Karels, husband and wife.

Evelyn M. Regnier
Evelyn M. Regnier
Notary Public, Ramsey County, Minnesota
My Commission Expires June 14, 1990

STATE OF MINNESOTA)
COUNTY OF RAMSEY)

The foregoing instrument was acknowledged before me this 14th day of January, 1986, by Robert C. Witt and Kay R. Witt, husband and wife.

Evelyn M. Regnier
Evelyn M. Regnier
Notary Public, Ramsey County, Minnesota
My Commission Expires June 14, 1990

Approved and accepted by the City Council of the City of Vadnais Heights, Minnesota this 22nd day of January, 1986.

Robert J. Holmstrom, Mayor; Gerald J. Urban, Clerk

Taxes for the year 1986 on land described herein paid, no delinquent taxes and transfer entered, this 8 day of April, 1986.
Lou McKenna, Director; Sue Barabell, Deputy
Department of Property Taxation

Pursuant to Chapter 7, Minnesota Laws of 1976, this plat has been reviewed and approved, this 8th day of April, 1986, and the conditions of Minnesota Statutes, Section 505.03, Subdivision 2, have been fulfilled.

David D. Claypool
Acting Ramsey County Surveyor

County Recorder, County of Ramsey, State of Minnesota

I hereby certify that this plat of KARELS AND WITT PARK NO. 2 was filed in this office this 14th day of April, 1986, at 9:20 o'clock A.M., and was filed in Book 99 of Plats, Page 18, as Document No. 2309350.

John C. McLaughlin, County Recorder
By: Deputy