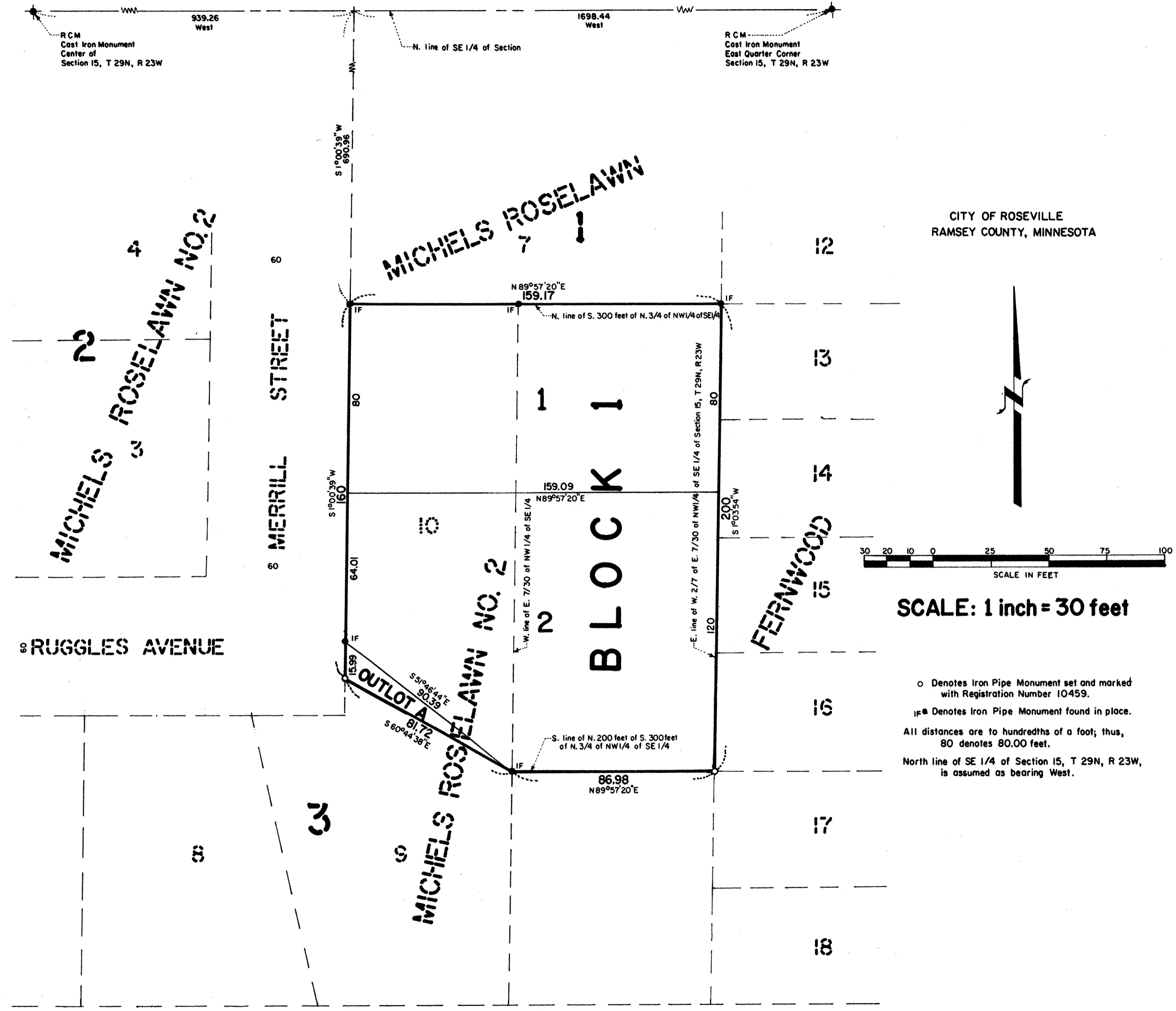


# KOALSKA ADDITION NO. 2



Know All Persons By These Presents that Laurence J. Koalska, divorced and not remarried, owner of the following described property situated in the City of Roseville, Ramsey County, Minnesota:

The North 200 feet of the South 300 feet of the West 2/7 of the East 7/30 of the North 3/4 of the Northwest 1/4 of the Southeast 1/4 of Section 15, Township 29, Range 23, according to the United States Government Survey thereof on file and of record in the office of the County Recorder in and for Ramsey County, Minnesota; and Lot ten (10), Block three (3), Michels Roselawn No. 2; according to the recorded plat thereof.

Has caused the same to be surveyed, platted and known as KOALSKA ADDITION NO. 2.

Has hereunto set his hand this 31<sup>st</sup> day of December, 1985.

Signed: Laurence J. Koalska  
Laurence J. Koalska

STATE OF MINNESOTA  
COUNTY OF RAMSEY )

The foregoing instrument was acknowledged before me this 31<sup>st</sup> day of December, 1985, by Laurence J. Koalska, divorced and not remarried.

Muriel L. England  
Notary Public, Washington County, Minnesota  
My Commission Expires October 22, 1990

I, Donald W. Schmidt, hereby certify that I have surveyed and platted the property described in the dedication of this plat as KOALSKA ADDITION NO. 2; that this plat is a correct representation of said survey; that all distances are correctly shown on the plat; that all monuments have been correctly placed in the ground as shown; that the outside boundary lines are correctly designated on the plat; and there are no wet lands, easements or public highways other than as shown thereon.

Donald W. Schmidt  
Donald W. Schmidt, RLS  
Minnesota Registration No. 10459

STATE OF MINNESOTA  
COUNTY OF RAMSEY )

The Surveyor's Certificate was subscribed and sworn to before me, a Notary Public, this 26<sup>th</sup> day of November, 1985.

Alan John Irwin  
Alan John Irwin  
Notary Public, Anoka County, Minnesota  
My Commission Expires May 23, 1986



SCALE: 1 inch = 30 feet

o Denotes Iron Pipe Monument set and marked with Registration Number 10459.  
# Denotes Iron Pipe Monument found in place.  
All distances are to hundredths of a foot; thus, 80 denotes 80.00 feet.  
North line of SE 1/4 of Section 15, T 29N, R 23W, is assumed as bearing West.

Approved and accepted by the City Council of the City of Roseville, Minnesota, this 10<sup>th</sup> day of December, 1985.

Gene Almond Mayor  
James J. Guse Clerk

Taxes for the year 1985 on land described herein paid, no delinquent taxes and transfer entered, this 26 day of December, 1985.

Ray McKenna Director  
Department of Property Taxation  
By Sue Barkwell Deputy

Pursuant to Chapter 7, Minnesota Laws of 1976, this plat has been reviewed and approved this 26<sup>th</sup> day of December, 1985, and the conditions of Minnesota Statutes, Section 505.03, Subdivision 2, have been fulfilled.

David D. Claypool  
David D. Claypool  
Acting Ramsey County Surveyor

County Recorder, County of Ramsey, State of Minnesota

I hereby certify that this plat of KOALSKA ADDITION NO. 2 was filed in this office this 26<sup>th</sup> day of December, 1985, at 1:55 o'clock P.M., and was filed in Book 99 of Plats, page 14, as Document No. 2294414.

John C. McLaughlin, County Recorder  
By \_\_\_\_\_ Deputy