

ROBERT TILSEN'S MAPLEWOOD HEIGHTS NO. 13

Know All Persons By these Presents that Kurt P. Kramer, Personal Representative of the Estate of Johanna Kramer, a single person at the time of her death, decedent, owner and Tilsen Homes, Inc., a Minnesota corporation, contract purchaser of the following described property situated in the City of Maplewood, Ramsey County, Minnesota:

The East 150 feet of the West 262.60 feet of the South 297.45 feet of the North 330.45 feet of the Northwest quarter of the Northwest quarter of Section 1, Township 29, Range 22.

and that Kurt P. Kramer and Leona M. Kramer, husband and wife, owners and Tilsen Homes, Inc., a Minnesota corporation, contract purchaser of the following described property situated in the City of Maplewood, Ramsey County, Minnesota:

The West 112.60 feet of the South 297.45 feet of the North 330.45 feet of the Northwest Quarter of the Northwest Quarter of Section 1, Township 29 North, Range 22 West.

Have caused the same to be surveyed, platted and known as ROBERT TILSEN'S MAPLEWOOD HEIGHTS NO. 13 and do hereby dedicate to the public for public use forever the road, avenue and the utility and drainage easements as shown on the plat.

Kurt P. Kramer, Personal Representative of the Estate of Johanna Kramer, a single person at the time of her death, decedent, has hereunto set his hand this 19th day of August, 1985.

Signed: Kurt P. Kramer
Kurt P. Kramer, Personal Representative of the Estate of Johanna Kramer

Tilsen Homes, Inc., a Minnesota corporation, has caused these presents to be signed by its proper officers this 19th day of August, 1985.

Signed: Tilsen Homes, Inc.
Robert S. Tilsen Robert S. Tilsen its President
James A. Tilsen James A. Tilsen its Vice President

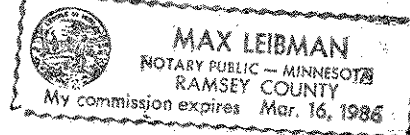
Kurt P. Kramer and Leona M. Kramer, husband and wife, have hereunto set our hands this 19th day of August, 1985.

Signed: Kurt P. Kramer Kurt P. Kramer
Leona M. Kramer Leona M. Kramer

STATE OF MINNESOTA
COUNTY OF Ramsey

The foregoing instrument was acknowledged before me this 19th day of August, 1985, by Kurt P. Kramer, Personal Representative of the Estate of Johanna Kramer, a single person at the time of her death, decedent.

Max Leibman
Notary Public, Ramsey County, Minnesota
My Commission Expires March 16, 1986



STATE OF MINNESOTA

COUNTY OF Ramsey

The foregoing instrument was acknowledged before me this 19th day of August, 1985, by Robert S. Tilsen, President, and by James A. Tilsen, Vice President of Tilsen Homes, Inc., a Minnesota corporation, on behalf of the corporation.

Max Leibman
Notary Public, Ramsey County, Minnesota
My Commission Expires March 16, 1986

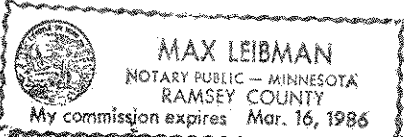


STATE OF MINNESOTA

COUNTY OF Ramsey

The foregoing instrument was acknowledged before me this 19th day of August, 1985, by Kurt Paul Kramer and by Leona M. Kramer, husband and wife.

Max Leibman
Notary Public, Ramsey County, Minnesota
My Commission Expires March 16, 1986



I, Gregory Brick, hereby certify that I have surveyed and platted the property described in the dedication of this plat as ROBERT TILSEN'S MAPLEWOOD HEIGHTS NO. 13; that this plat is correct representation of said survey; that all distances are correctly shown on the plat; that all monuments have been correctly placed in the ground as shown; that the outside boundary lines are correctly designated on the plat; and there are no wet lands, easements or public highways other than as shown thereon.

Gregory Brick
Land Surveyor - Minnesota Registration No. 16085

STATE OF MINNESOTA

COUNTY OF Ramsey

The Surveyor's Certificate was subscribed and sworn to before me, a Notary Public, this 16th day of August, 1985.

Max Leibman
Notary Public, Ramsey County, Minnesota
My Commission Expires March 16, 1986



Approved and accepted by the City Council of the City of Maplewood, Minnesota this 12th day of 8, 1986.

John Breason Mayor
Quillen E. Amelias Clerk

Taxes for the year 1985 on land described herein paid, no delinquent taxes and transfer entered, this 23rd day of August, 1985.

Low McKenna Director By R.J. Saly Deputy
Department of Property Taxation

Pursuant to Chapter 7, Minnesota Laws of 1976, this plat has been reviewed and approved, this 28th day of August, 1985, and the conditions of Minnesota Statutes, Section 505.03, Subdivision 2, have been fulfilled.

David D. Claypool
David D. Claypool, Acting Ramsey County Surveyor

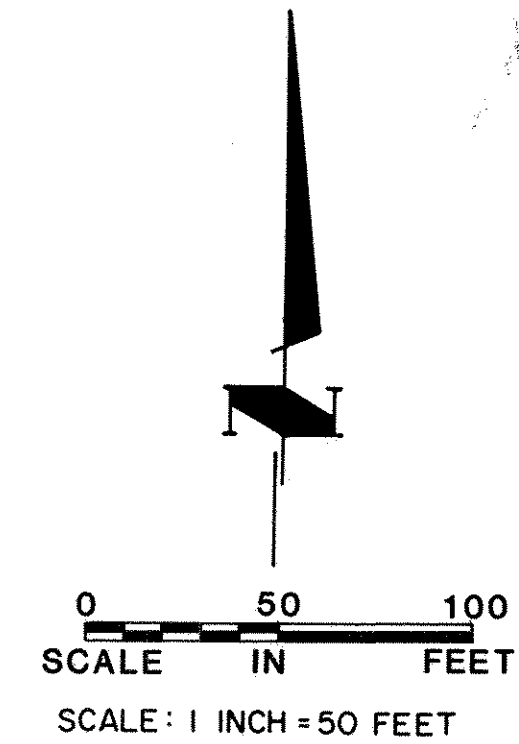
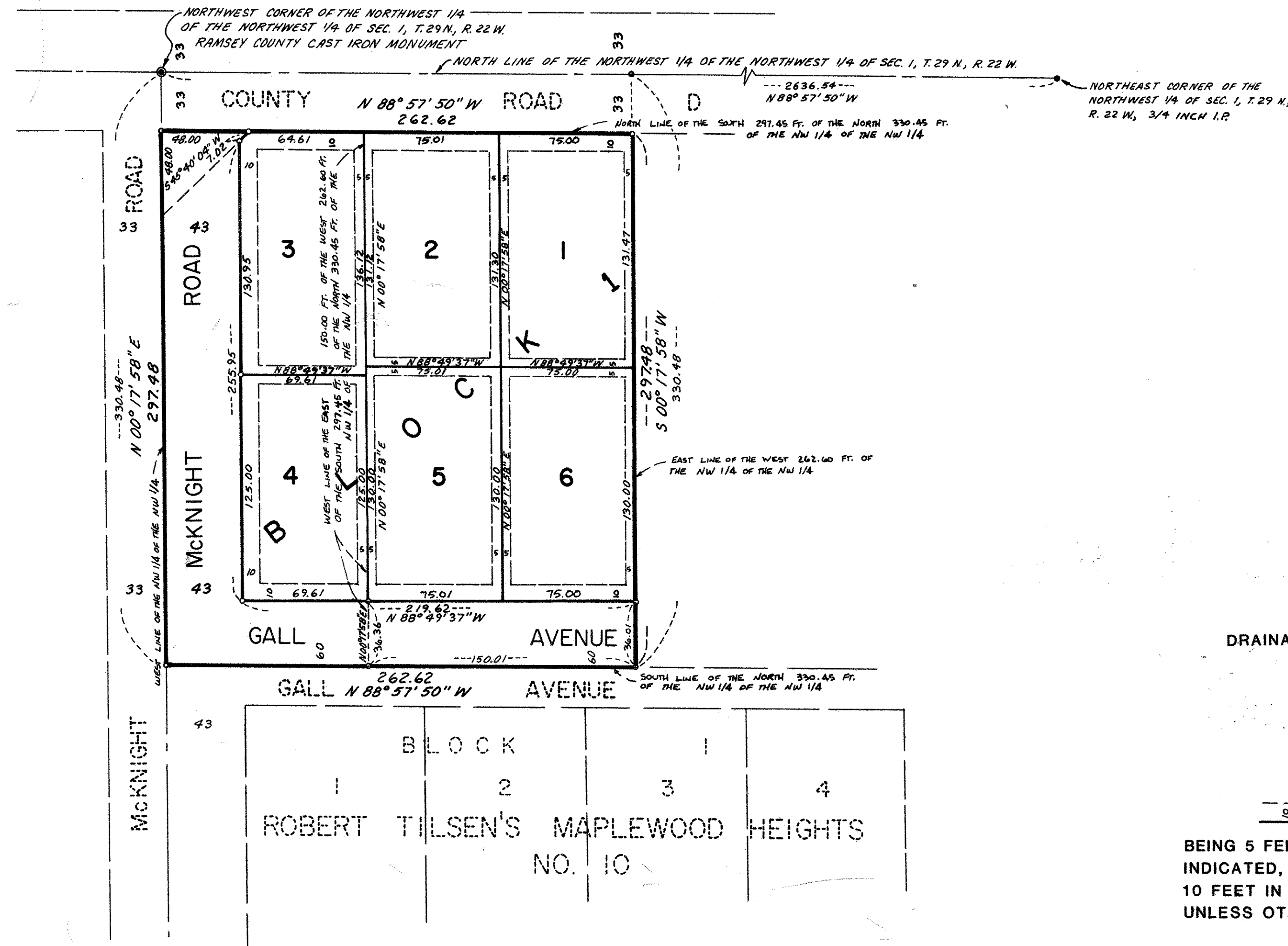
County Recorder, County of Ramsey, State of Minnesota

I hereby certify that this plat of ROBERT TILSEN'S MAPLEWOOD HEIGHTS NO. 13 was filed in this office this 28th day of AUGUST, 1985, at 12:40 o'clock P.M., and was filed in Book 98 of Plats, Pages 23 and 24, as Document No. 2279682.

By John C. McLaughlin, County Recorder Deputy



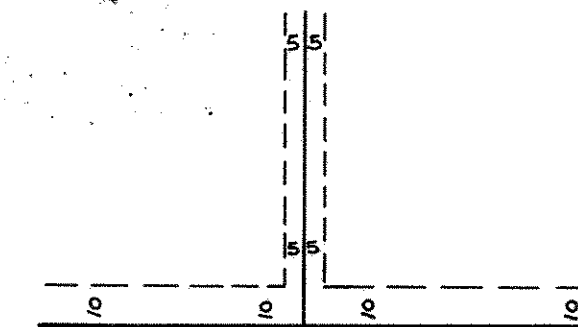
ROBERT TILSEN'S MAPLEWOOD HEIGHTS NO. 13



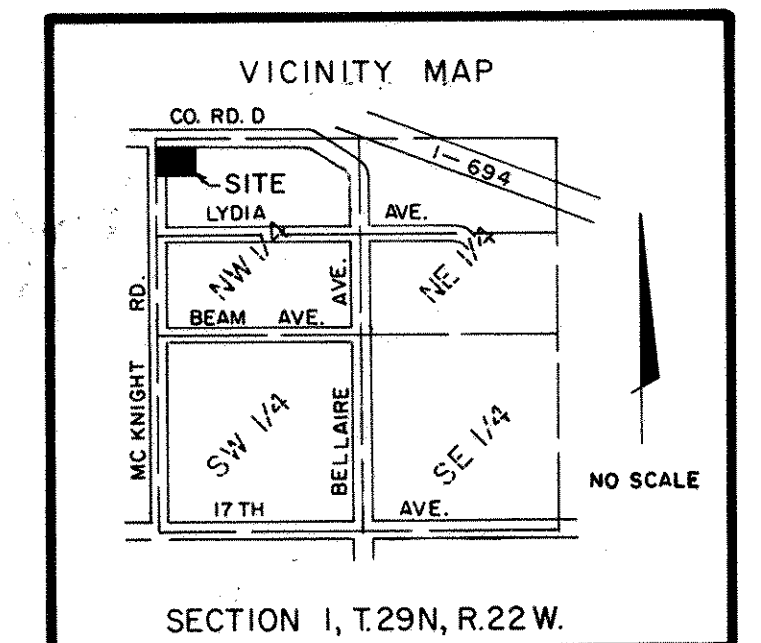
- DENOTES IRON MONUMENT FOUND
- DENOTES 1/2 INCH BY 18 INCH MONUMENT SET MARKED WITH REGISTRATION NO. 16085

THE NORTH LINE OF THE NORTHWEST QUARTER OF THE NORTHWEST QUARTER HAS AN ASSUMED BEARING OF N 88° 57' 50" W

DRAINAGE AND UTILITY EASEMENTS ARE SHOWN THUS:



BEING 5 FEET IN WIDTH, UNLESS OTHERWISE INDICATED, AND ADJOINING LOT LINES, AND 10 FEET IN WIDTH AND ADJOINING STREET LINES UNLESS OTHERWISE SHOWN ON THE PLAT



PROBE ENGINEERING COMPANY, INC.
 CONSULTING ENGINEERS, PLANNERS and LAND SURVEYORS
 1000 EAST 146th STREET, BURNSVILLE, MINNESOTA 55337 PH 432-3000