

# LEWIS PARK ADDITION

Know All Persons By These Presents That Gaughan Land, Incorporated, a Minnesota Corporation, owner of the following described property situated in the City of Saint Paul, County of Ramsey, State of Minnesota:

Lots 1 thru 30, Block 14 of Blocks 7, 8, 9, 10, 11, 12, 13, 14 & 15, Lewis (2) Addition to St. Paul, Minnesota, according to the plat thereof on file and of record in the office of the County Recorder, in and for said County and State.

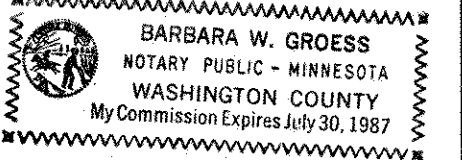
Has caused the same to be surveyed, platted and known as LEWIS PARK ADDITION and does hereby dedicate to the public for public use forever the easements for utility and drainage purposes as shown on the plat. In witness whereof said Gaughan Land, Incorporated, a Minnesota Corporation, has caused these presents to be signed by its president, this 15 day of October, 1982.

Signed: Gaughan Land, Incorporated

*Patrick J. Gaughan*  
Patrick J. Gaughan, President

State of Minnesota) County of Wash. The foregoing instrument was acknowledged before me this 15 day of October, 1982, by Patrick J. Gaughan, President of Gaughan Land, Incorporated, a Minnesota Corporation, on behalf of the corporation.

*Barbara W. Groess*  
Notary Public, Washington County, Minnesota  
My Commission Expires July 30, 1987



I, Raymond A. Prasch, hereby certify that I have surveyed and platted the property described in the dedication of this plat as LEWIS PARK ADDITION; that this plat is a correct representation of said survey; that all distances are correctly shown on the plat; that all monuments have been correctly placed in the ground as shown; that the outside boundary lines are correctly designated on the plat; and there are no wetlands, easements or public highways other than as shown thereon.

*Raymond A. Prasch*  
Raymond A. Prasch, Land Surveyor  
Minnesota Registration No. 6743

State of Minnesota) County of Hennepin) The Surveyor's Certificate was subscribed and sworn to before me, a Notary Public, this 15<sup>th</sup> day of OCTOBER, 1982.

*Milton E. Hyland*  
Milton E. Hyland - Notary Public, Henn. Co., Minn.  
My Commission Expires November 19, 1987

Approved and accepted by the City Council of the City of Saint Paul, Minnesota, this 23<sup>rd</sup> day of Sept., 1982.

*Albert B. Olson*  
Clerk

No delinquent taxes and transfer entered, this 15<sup>th</sup> day of October, 1982.

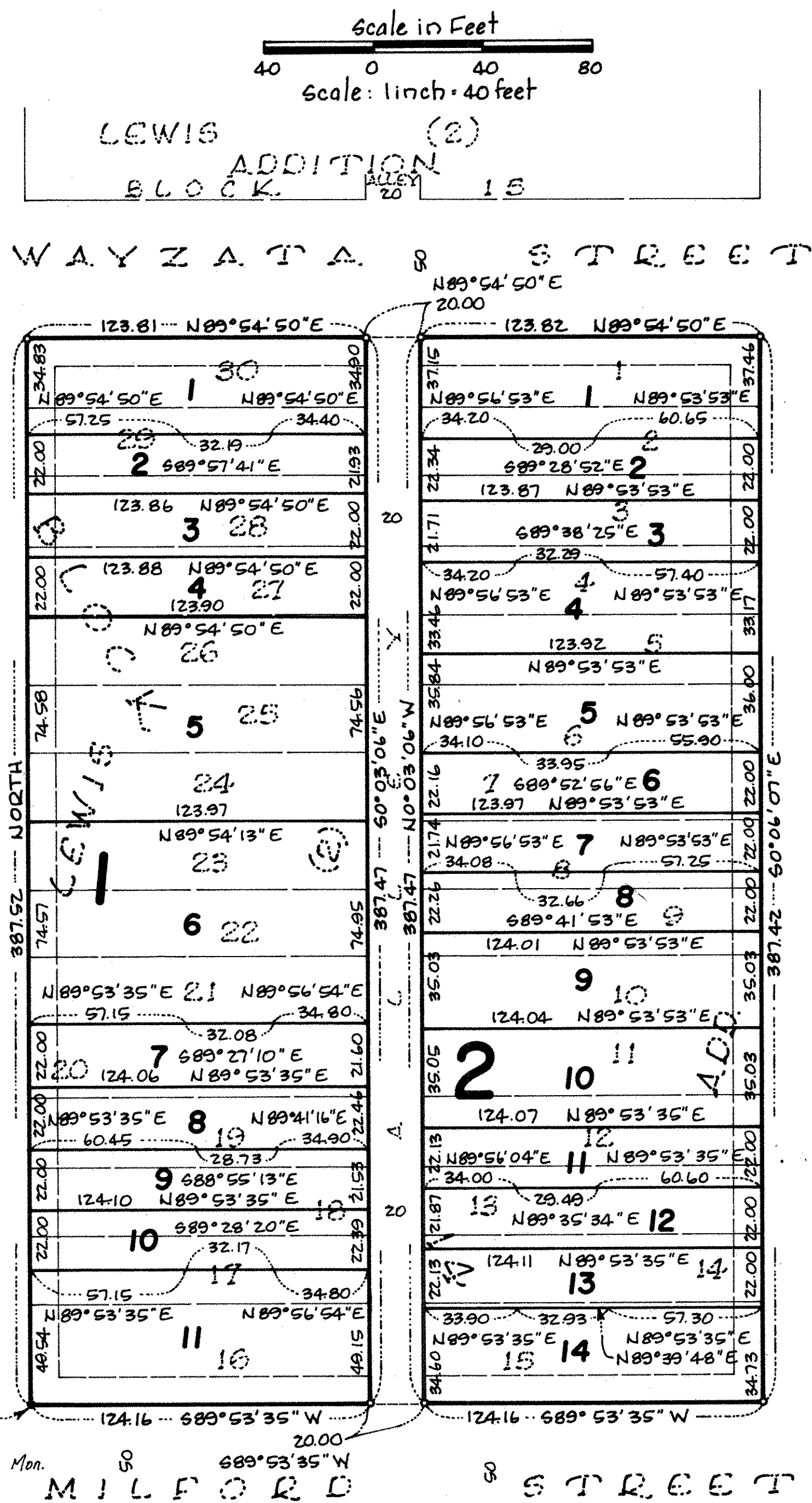
*Low McKenna* Director By *V. Zaus* Deputy  
Department of Property Taxation

Pursuant to Chapter 7, Minnesota Laws of 1976, this plat has been reviewed and approved, this 20<sup>th</sup> day of October, 1982 and the conditions of Minnesota Statutes, Section 505.03, Subdivision 2, have been fulfilled.

*F. R. Kvidera*  
F. R. Kvidera, Acting Ramsey County Surveyor

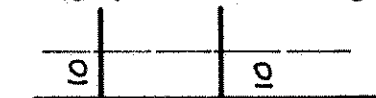
County Recorder, County of Ramsey, State of Minnesota  
I hereby certify that this plat of LEWIS PARK ADDITION was filed in this office this 20<sup>th</sup> day of OCTOBER, 1982, at 11:55 o'clock A.M. and was filed in Book 95 of Plats, Page 10, as Document No. 2159302.  
TORRENS BOOK 33 OF PLATS, PAGE 25, AS DOCUMENT NO. 728298.

By \_\_\_\_\_ Deputy  
Eugene H. Gibbons, County Recorder



LEWIS ADDITION BLOCK 13  
**LOT SURVEYS COMPANY, INC.**  
LAND SURVEYORS

UTILITY & DRAINAGE EASEMENTS ARE SHOWN



THUS: Being 10 feet in width & adjoining street lines as shown on the plat.

o - Denotes Iron Monument Set

BEARINGS SHOWN ARE ON AN ASSUMED DATUM

ALLEY  
FEYEN'S ADDITION  
STREET  
BURGESS ST  
ALLEY  
ADDITION  
ALLEY  
HOMESTEAD BLOCK

LEWIS (2) ADD. 10  
60  
50  
STREET  
60  
60  
M A R I O N (2) ADD. 12  
60  
LEWIS (2) ADD. 12