

NORTHPORT ADDITION

CITY OF SAINT PAUL
RAMSEY COUNTY, MINNESOTA

GEORGI-SCHMIDT & ASSOCIATES INC.
LAND SURVEYORS

Know All Persons By These Presents that

Port Authority of the City of Saint Paul, a Minnesota Corporation, owner, of the following described property situated in the City of Saint Paul, Ramsey County, Minnesota:

Lots 1 to 9, inclusive, Block 1, and that part of adjoining Missouri Street, vacated, lying Northerly of the center line of adjoining Tennessee Street;

Those parts of Lots 10 and 11, Block 1, that part of adjoining Taft Street, vacated, and that part of the Northerly half of Tennessee Street, vacated, adjoining said Block 1, which lie Easterly and Northerly of a line described as beginning at a point on the North line of Block 2 distant 110.6 feet East from the Northwest corner of said Block 2; thence Northerly to a point on the South line of said Lot 10 distant 71.8 feet East from the Southwest corner of said Block 1; thence Northwesterly through a point on the West line of said Lot 11 distant 45.9 feet North from the Southwest corner of said Block 1 to the West line of Taft Street and there terminating;

all in Second Addition to Brooklynd St. Paul, Minn.

Lots 1 to 7, inclusive, and 16 to 22, inclusive, Block 2, together with that part of adjoining Missouri Street, vacated, lying between the center lines of adjoining Tennessee Street and Kentucky Street;

Those parts of Lots 8, 9 and 15, Block 2, that part of the alley, vacated, in said Block 2, and those parts of the South half of Tennessee Street, vacated, and of the North half of Kentucky Street, vacated, adjoining said Block 2, which lie Easterly of a line described as beginning at a point on the South line of Block 1 distant 71.8 feet East from the Southwest corner of said Block 1; thence Southerly to a point on the North line of said Lot 9 distant 110.6 feet East from the Northwest corner of said Block 2; thence Southerly to a point on the South line of said Lot 15 distant 129.4 feet East from the Southwest corner of said Block 2; thence Southerly to a point on the North line of Block 3 distant 136.2 feet East from the Northwest corner of said Block 3 and there terminating;

all in Second Addition to Brooklynd St. Paul, Minn.

Lots 1 to 7, inclusive, and 17 to 22, inclusive, Block 3, together with that part of adjoining Missouri Street, vacated, lying between the center lines of adjoining Kentucky Street and Texas Street;

Those parts of Lots 8, 15 and 16, Block 3, that part of the alley, vacated, in said Block 3, and those parts of the South half of Kentucky Street, vacated, and of the North half of Texas Street, vacated, adjoining said Block 3, which lie Easterly of a line described as beginning at a point on the South line of Block 2 distant 129.4 feet East from the Southwest corner of said Block 2; thence Southerly to a point on the North line of said Lot 8 distant 136.2 feet East from the Northwest corner of said Block 3; thence Southerly to a point on the South line of said Lot 16 distant 163.3 feet East from the Southwest corner of said Block 3; thence Southerly to a point on the North line of Block 4 distant 168.6 feet East from the Northwest corner of said Block 4 and there terminating;

all in Second Addition to Brooklynd St. Paul, Minn.

Lots 1 to 6, inclusive, and 18 to 22, inclusive, Block 4, together with that part of adjoining Missouri Street, vacated, lying between the extensions across said street of the center line of adjoining Texas Street and the South line of said Lot 22;

Those parts of Lots 7, 16 and 17, Block 4, that part of the alley, vacated, in said Block 4, and that part of the South half of Texas Street, vacated, adjoining said Block 4, which lie Easterly of a line described as beginning at a point on the South line of Block 3 distant 163.3 feet East from the Southwest corner of said Block 3; thence South to a point on the North line of said Lot 7 distant 168.6 feet East from the Northwest corner of said Block 4; thence South to a point on the South line of said Lot 17 distant 212.29 feet East from the West line of said Block 4; as measured along the extended South line of Lots 14, 15, 16 and 17, in said Block 4, and there terminating; and that part of St. Lawrence Street, vacated, lying Westerly of the extension of the East line of said part of Missouri Street and Easterly of a line described as beginning at a point on the South line of said Lot 17 distant 212.29 feet East from the West line of said Block 4 as measured along the extended South line of Lots 14, 15, 16 and 17, in said Block 4; thence South to a point on the North line of Block 5 distant 12 feet West from the Northeast corner of Lot 6, said Block 5 and there terminating;

all in Second Addition to Brooklynd St. Paul, Minn.

Lots 1 to 10, inclusive, and the alley, vacated, Block 13, together with that part of the South half of adjoining Texas Street, formerly Second Street, vacated, lying between the extensions across said street of the East and West lines of said Block 13, and together with that part of adjoining Wisconsin Avenue, formerly Wisconsin Street, vacated, and that part of the East half of adjoining Lowell Street, formerly Madison Street, vacated, lying between the extension across said avenue and street of the South line of said Block 13 and the center line of said Texas Street; and that part of adjoining St. Lawrence Street, vacated, lying between the extensions of the center line of said Lowell Street and the East line of said part of Wisconsin Avenue; F. Ambs' Addition to West Saint Paul.

Lots 1 to 10, inclusive, and the alley, vacated, Block 14, together with that part of the South half of adjoining Texas Street, formerly Second Street, vacated, lying between the extensions across said street of the East and West lines of said Block 14, and together with that part of the West half of adjoining Lowell Street, formerly Madison Street, vacated, and that part of the East half of adjoining Court Street, formerly Washington Street, vacated, lying between the extension across said streets of the South line of said Block 14 and the center line of said Texas Street; and that part of vacated St. Lawrence Street lying between the center lines of Court Street and Lowell Street, F. Ambs' Addition to West Saint Paul.

Lots 1 to 12, inclusive, and the alley, vacated, Block 15, together with that part of the South half of adjoining Texas Street, formerly Second Street, vacated, lying between the extensions across said street of the East and West lines of said Block 15, and together with that part of the West half of adjoining Court Street, formerly Washington Street, vacated, and that part of adjoining Missouri Street, formerly Minnesota Street, vacated, lying between the extension across said streets of the South line of said Block 15 and the center line of said Texas Street; and that part of adjoining St. Lawrence Street, vacated, lying between the extension of the West line of said part of Missouri Street and the center line of Court Street, F. Ambs' Addition to West Saint Paul.

Lots 1 to 12, inclusive, and the alley, vacated, Block 16, together with that part of the North half of adjoining Texas Street, formerly Second Street, vacated, and that part of the South half of adjoining Kentucky Street, formerly First Street, vacated, lying between the extensions across said streets of the East and West lines of said Block 16, and together with that part of adjoining Missouri Street, formerly Minnesota Street, vacated, and that part of the West half of adjoining Court Street, formerly Washington Street, vacated, lying between the center lines of said Texas Street and Kentucky Street, F. Ambs' Addition to West Saint Paul.

Lots 1 to 11, inclusive, and the alley, vacated, Block 17, together with that part of the North half of adjoining Texas Street, formerly Second Street, vacated, and that part of the Southwesterly half of adjoining Tennessee Street, formerly Mississippi Street, vacated, lying between the extensions across said streets of the East and West lines of said Block 17, and together with that part of the East half of adjoining Court Street, formerly Washington Street, vacated, and that part of the West half of adjoining Lowell Street, formerly Madison Street, vacated, lying between the center lines of said Texas Street and Tennessee Street, F. Ambs' Addition to West Saint Paul.

Lots 3 to 6, inclusive, Block 18, F. Ambs' Addition to West Saint Paul, Minn., together with that part of the Southerly half of adjoining Tennessee Street, vacated, and that part of the Northerly half of adjoining Texas Street, vacated, lying between the extensions across said streets of the East line of said Lot 3 and the West line of said Block 18 and together with that part of the East half of adjoining Lowell Street, vacated, lying between the extensions across said street of the center lines of said Tennessee Street and said Texas Street.

Lots 1 and 2, Block 18, together with that part of the North half of adjoining Texas Street, formerly Second Street, vacated, and that part of the Southwesterly half of adjoining Tennessee Street, formerly Mississippi Street, vacated, lying between the extensions across said streets of the East line of said Lot 1 and the West line of said Lot 2, and together with that part of adjoining Wisconsin Avenue, formerly Wisconsin Street, vacated, lying between the center lines of said Texas Street and Tennessee Street, F. Ambs' Addition to West Saint Paul.

Lots 1 to 6, inclusive, Block 19, together with that part of the North half of adjoining Kentucky Street, formerly First Street, vacated, and that part of the Southwesterly half of adjoining Tennessee Street, formerly Mississippi Street, vacated, lying between the extensions across said streets of the East and West lines of said Block 19, and together with that part of the West half of adjoining Court Street, formerly Washington Street, vacated, and that part of adjoining Missouri Street, formerly Minnesota Street, vacated, lying between the center lines of said Kentucky Street and Tennessee Street, F. Ambs' Addition to West Saint Paul.

Lots 1 to 6, inclusive, Block 20, together with that part of the Northeastly half of adjoining Tennessee Street, formerly Mississippi Street, vacated, lying between the extensions across said street of the East and West lines of said Block 20, and together with that part of the West half of adjoining Court Street, formerly Washington Street, vacated, and that part of adjoining Missouri Street, formerly Minnesota Street, vacated, lying Northeastly of the center line of said Tennessee Street, F. Ambs' Addition to West Saint Paul.

Lots 1 to 5, inclusive, Block 21, together with that part of the Northeastly half of adjoining Tennessee Street, formerly Mississippi Street, vacated, lying between the extensions across said street of the East and West lines of said Block 21, and together with that part of the West half of adjoining Lowell Street, formerly Madison Street, vacated, and that part of the East half of adjoining Court Street, formerly Washington Street, vacated, lying Northeastly of the center line of said Tennessee Street, F. Ambs' Addition to West Saint Paul.

Lots 1 to 5, inclusive, Block 22, together with that part of the Northeastly half of adjoining Tennessee Street, formerly Mississippi Street, vacated, lying between the extensions across said street of the East and West lines of said Block 22, and together with that part of adjoining Wisconsin Avenue, formerly Wisconsin Street, vacated, and that part of the East half of adjoining Lowell Street, formerly Madison Street, vacated, lying Northeastly of the center line of said Tennessee Street, F. Ambs' Addition to West Saint Paul.

Has caused the same to be surveyed, platted and known as NORTHPORT ADDITION and does hereby dedicate to the public for public use forever the circle and utility easement as shown on the plat.

Port Authority of the City of Saint Paul, a Minnesota Corporation, has caused these presents to be signed by its proper officers and its corporate seal to be hereunto affixed this 17th day of November, 1980.

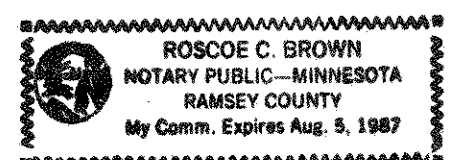
Signed: Port Authority of the City of Saint Paul, a Minnesota Corporation

George W. Winter President
Name Title
Arthur A. Anderson Secretary
Name Title

STATE OF MINNESOTA) s s
COUNTY OF RAMSEY)

(The foregoing instrument was acknowledged before me this 17th day of November, 1980, by *George W. Winter*, President, and by *Arthur A. Anderson*, Secretary of the Port Authority of the City of Saint Paul, a Minnesota Corporation, on behalf of the corporation.

Roscoe C. Brown
Notary Public, Ramsey County, Minnesota
My Commission Expires _____

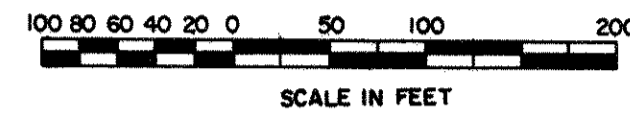


NORTHPORT ADDITION

○ Denotes Iron Pipe Monument set and marked with Registration No. 10459
 All distances along curves are arc lengths.
 All distances are to hundredths of a foot; thus, 70 denotes 70.00 feet.
 Bearings are based on Minnesota State Plane Coordinates, South Zone

Cathedral 711,011.68
 2,230,725.81
 Capitol Dome 714,030.85
 2,232,470.64
 Dayton (Mounds Park) 710,760.54
 2,244,301.40

All elevations are USGS datum (1912 Adjustment)
 B.M. = 705.25 USGS Monument No. L-254 1970 on Lafayette Bridge pier 40 feet North of Fillmore Ave.

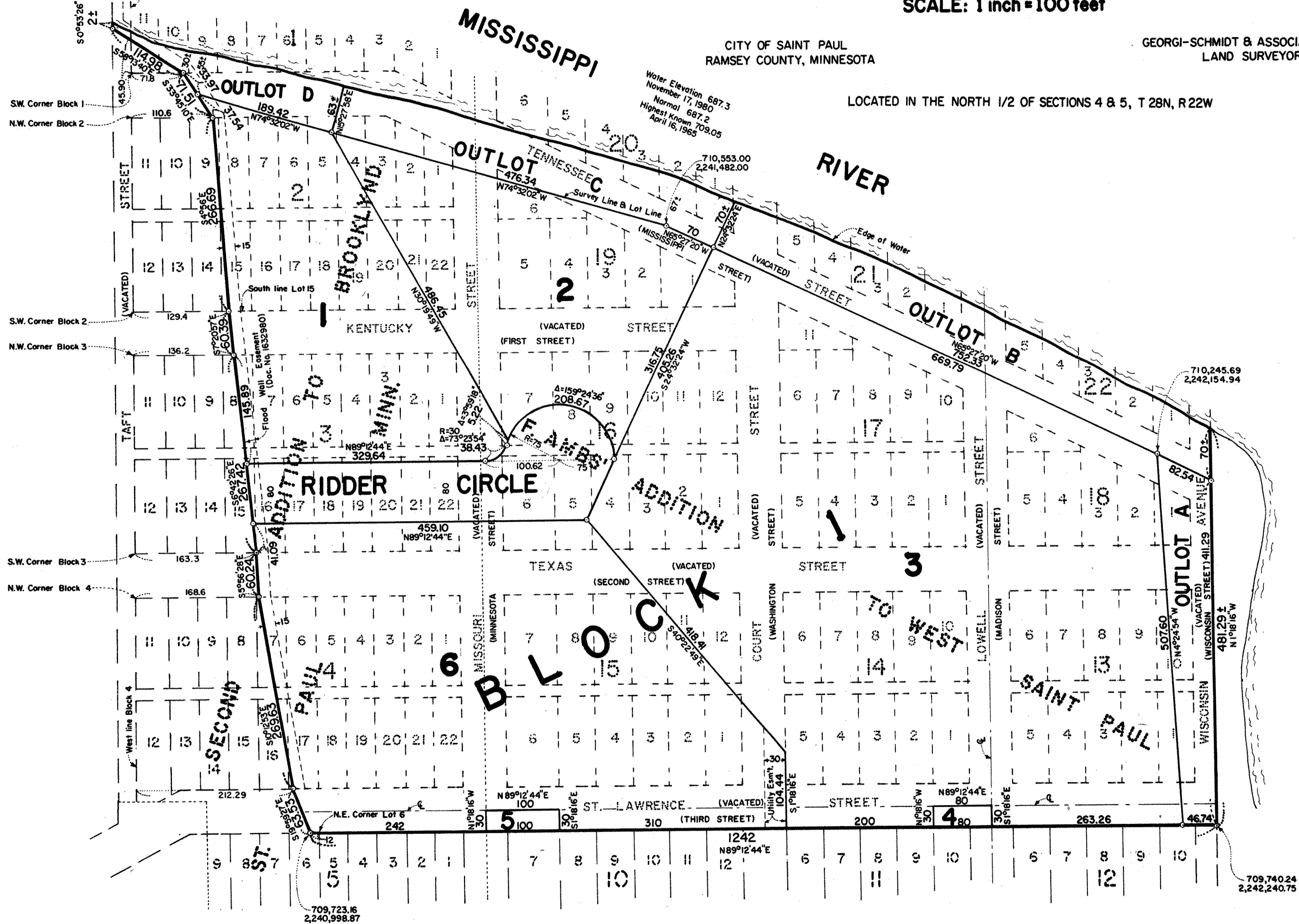


SCALE: 1 inch = 100 feet

CITY OF SAINT PAUL
RAMSEY COUNTY, MINNESOTA

GEORGI-SCHMIDT & ASSOCIATES INC.
LAND SURVEYORS

LOCATED IN THE NORTH 1/2 OF SECTIONS 4 & 5, T 28N, R 22W



I, Donald W. Schmidt, hereby certify that I have surveyed and platted the property described in the dedication of this plat as NORTHPORT ADDITION; that this plat is a correct representation of said survey; that all distances are correctly shown on the plat; that all monuments have been correctly placed in the ground as shown; that the outside boundary lines are correctly designated on the plat; and there are no wet lands, easements or public highways other than as shown thereon.

Donald W. Schmidt
 Registered Land Surveyor
 Minnesota Registration No. 10459

STATE OF MINNESOTA) S S
 COUNTY OF RAMSEY)
 The Surveyor's certificate was subscribed and sworn to before me, a Notary Public,
 this 18th day of November, 1980.

Alan John Irwin
 Notary Public, Anoka County, Minnesota
 My Commission Expires May 23, 1986

Approved and accepted by the City Council of the City of Saint Paul, Minnesota, this 20th day of Nov., 1980.

Robert M. ...
 Clerk

No delinquent taxes and transfer entered this 20th day of November, 1980.

Ron ... Director
 Department of Property Taxation
 By *Rebecca ...* Deputy

Pursuant to Chapter 7, Minnesota Laws of 1976, this plat has been approved this 26th day of November, 1980.

F. R. Kvidera
 F. R. Kvidera, Acting Ramsey County Surveyor

County Recorder, County of Ramsey, State of Minnesota
 I hereby certify that this plat of NORTHPORT ADDITION was filed in this office
 this 1st day of December, 1980, at 9:37 o'clock A.M. and was filed in
 Book 93 of Plats, Pages 1 and 2, as Document No. 2098745.

Eugene H. Gibbons, County Recorder
 By _____ Deputy