

BREWSTER TOWNHOUSES 2ND ADDITION

Know All Persons By These Presents that Knudsen Realty Co., a Minnesota Corporation owner and St. Anthony Park State Bank, a Minnesota Corporation, mortgage holder, of the following described property situated in the City of St. Paul, Ramsey County, Minnesota:

Lot 7, Block 1, Brewster Townhouses

Have caused the same to be surveyed, platted and known as BREWSTER TOWNHOUSES 2ND ADDITION.

Knudsen Realty Co., a Minnesota Corporation, has caused these presents to be signed by its proper officers and its corporate seal to be hereunto affixed this 29th day of SEPTEMBER, 19 80.

Signed: Knudsen Realty Co., a Minnesota Corporation

Charles B. Knudsen, its PRESIDENT
Name Title
Charles B. Knudsen, its SECRETARY
Name Title

St. Anthony Park State Bank, a Minnesota Corporation, has caused these presents to be signed by its proper officers and its corporate seal to be hereunto affixed this 1st day of OCTOBER, 19 80.

Signed: St. Anthony Park State Bank, a Minnesota Corporation

Bradley K. Rinsem, its VICE PRESIDENT
Name Title
Glen D. Bosch, its ASST VICE PRESIDENT
Name Title

State of Minnesota)
County of RAMSEY

The foregoing instrument was acknowledged before me this 29th day of SEPTEMBER, 19 80, by CHARLES B. KNUDSEN, PRESIDENT, and by CHARLES B. KNUDSEN, SECRETARY, of Knudsen Realty Co., a Minnesota Corporation, on behalf of the corporation.

Stephen J. Townley
Notary Public, RAMSEY County, Minnesota
My Commission Expires DECEMBER 6, 1985

State of Minnesota)
County of RAMSEY

The foregoing instrument was acknowledged before me this 1st day of OCTOBER, 19 80, by BRADLEY K RINSEM, VICE PRESIDENT, and by GLEN D BOSCH, ASST VICE PRESIDENT, of St. Anthony Park State Bank, a Minnesota Corporation, on behalf of the corporation.

Stephen J. Townley
Notary Public, RAMSEY County, Minnesota
My Commission Expires DECEMBER 5, 1985

I, Warren I. Forsberg, hereby certify that I have surveyed and platted the property described in the dedication of this plat as BREWSTER TOWNHOUSES 2ND ADDITION; that this plat is a correct representation of said survey; that all distances are correctly shown on the plat; that all monuments have been correctly placed in the ground as shown; that the outside boundary lines are correctly designated on the plat; and there are no wet lands or public highways other than as shown thereon.

Warren I. Forsberg
WARREN I. FORSBERG, Land Surveyor
MINNESOTA REGISTRATION NUMBER 4840

State of Minnesota)
County of RAMSEY

The Surveyor's certificate was subscribed and sworn to before me, a Notary Public, this 26th day of September, 1980.

Warren I. Forsberg
Notary Public, Ramsey County, Minnesota
My Commission Expires 24th Sept, 1984

Approved and accepted by the City Council of the City of St. Paul, Minnesota, this 14th day of OCTOBER, 1980.

Rose Mifflin
Clerk

Pursuant to Chapter 7, Minnesota Laws of 1976, this plat has been approved this 22nd day of October, 1980.

F. R. Kvidera
F. R. Kvidera
Acting Ramsey County Surveyor

No delinquent taxes and transfer entered this 21st day of October, 1980.

Lawrence Kennel Director
Department of Property Taxation
By P. Loney Deputy

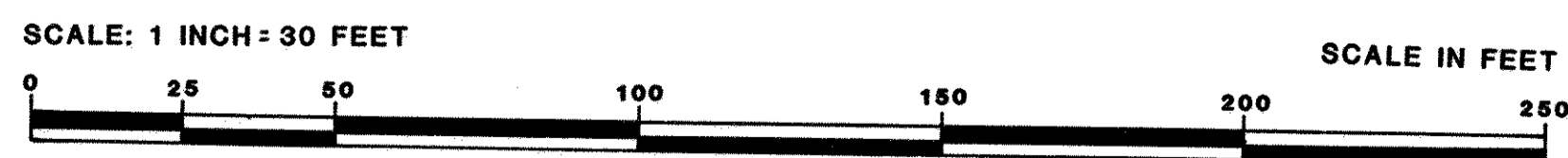
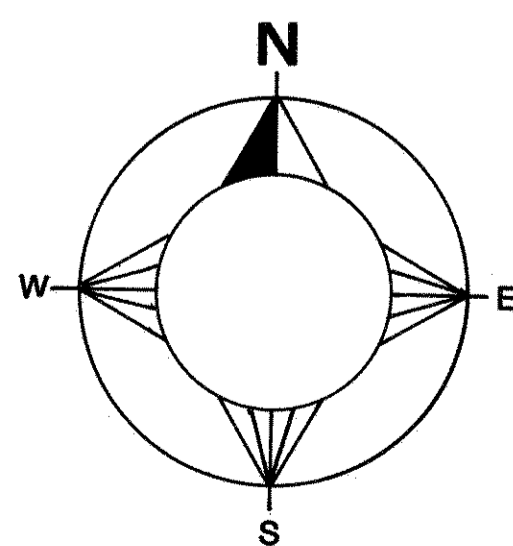
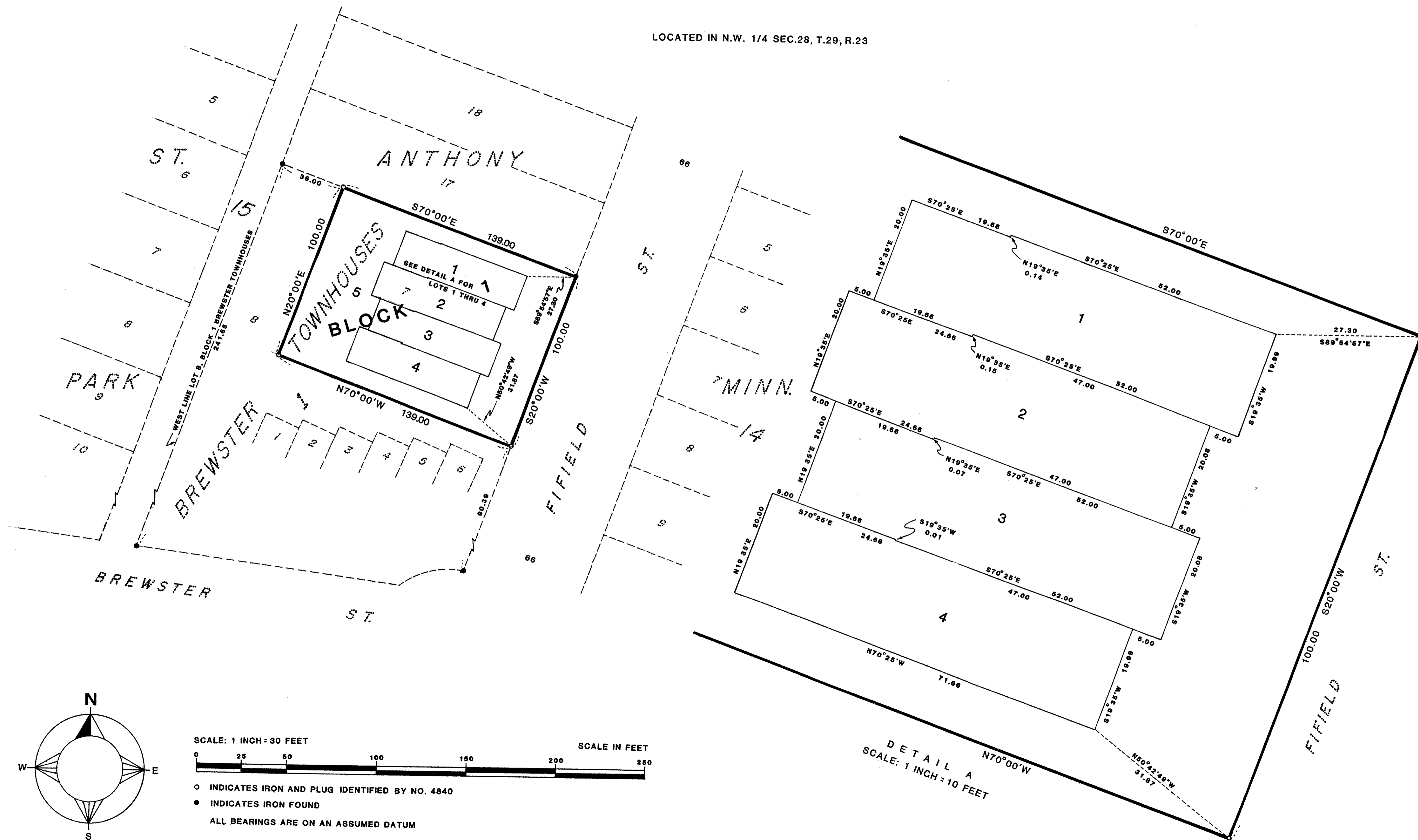
Registrar of Titles, County of Ramsey, State of Minnesota

I hereby certify that this plat of BREWSTER TOWNHOUSES 2ND ADDITION was filed in this office this 22nd day of OCTOBER, 1980 at 10:10 o'clock A.M. and was filed in Book 32 of Plats, Pages 7 and 8, as Document No. 698691.

Eugene H. Gibbons, Registrar of Titles
By _____ Deputy

BREWSTER TOWNHOUSES 2ND ADDITION

LOCATED IN N.W. 1/4 SEC.28, T.29, R.23



- INDICATES IRON AND PLUG IDENTIFIED BY NO. 4840
- INDICATES IRON FOUND

ALL BEARINGS ARE ON AN ASSUMED DATUM

DETAIL A
SCALE: 1 INCH = 10 FEET