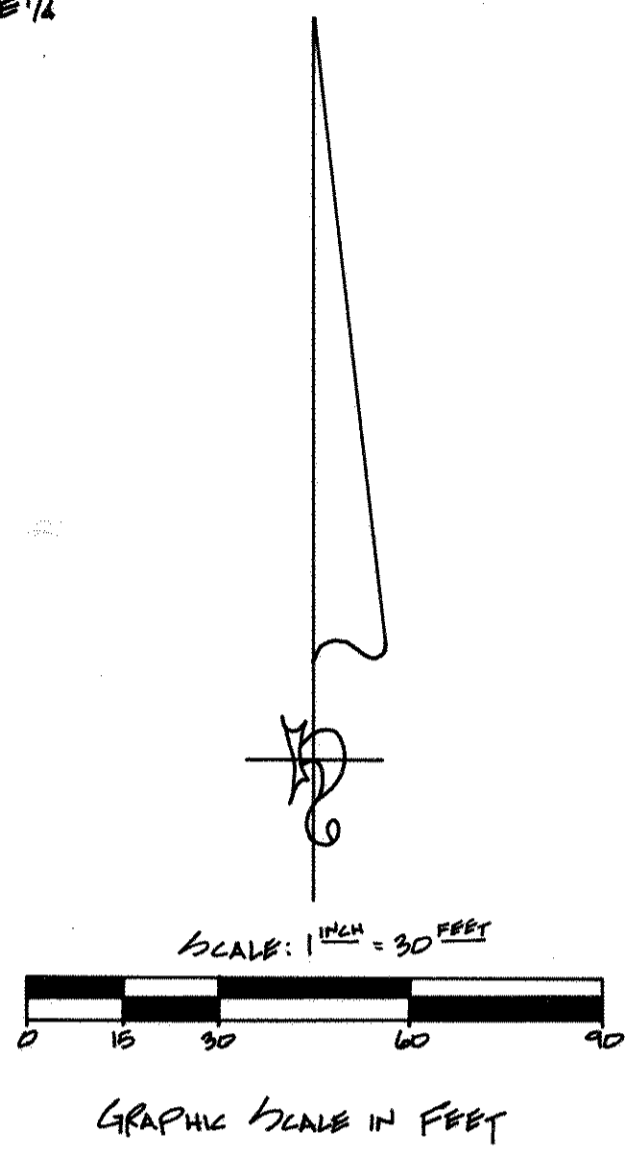
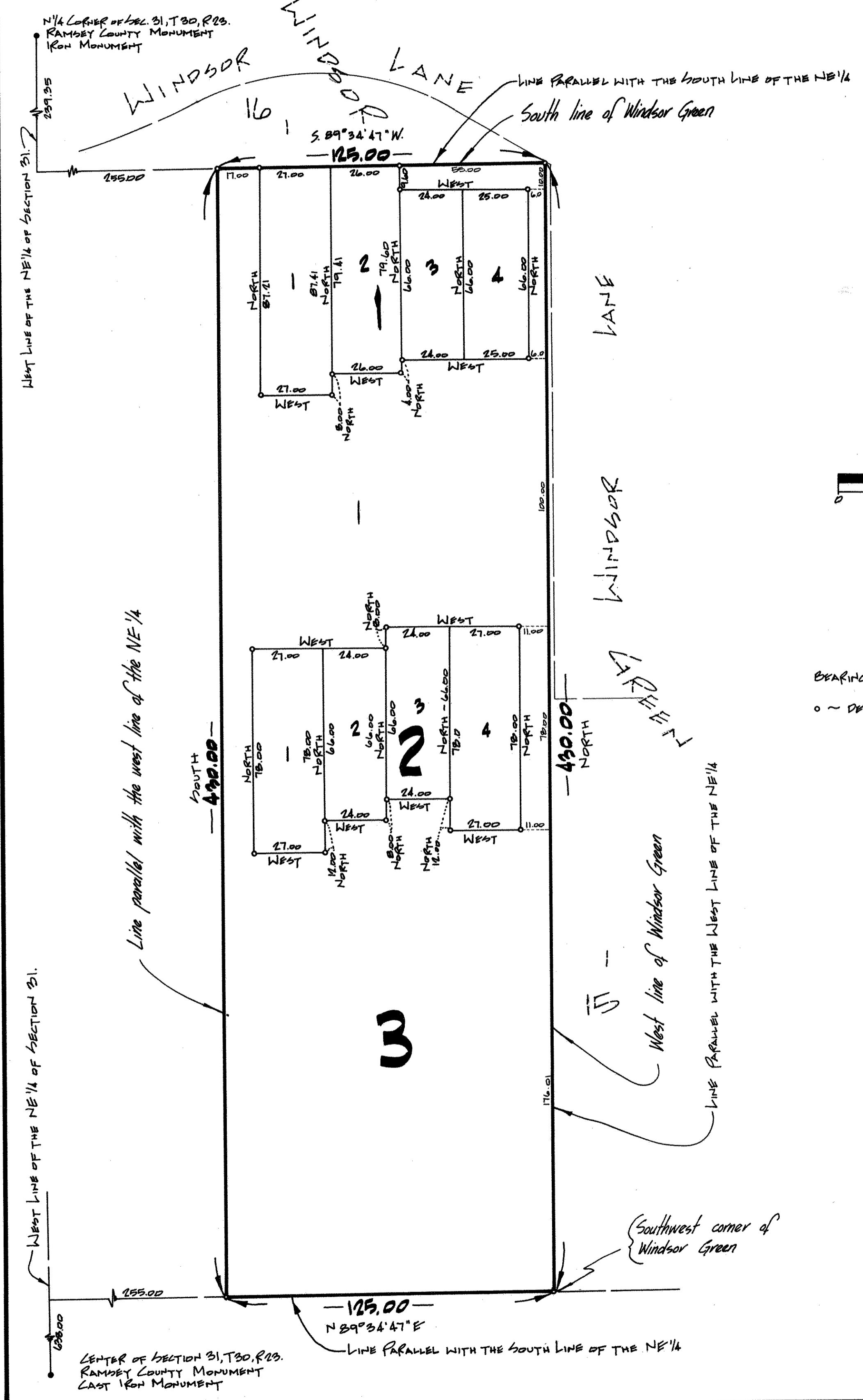


# RIVIERA'S WINDSOR GREEN ADDITION



BEARINGS SHOWN ARE ON AN ASSUMED DATUM  
 O ~ DATUM IRON MONUMENT SET

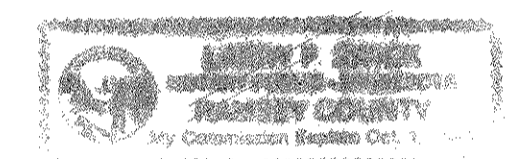
AUGUST, 1979

KNOW ALL PERSONS BY THESE PRESENTS that Windsor Green Association, a Minnesota corporation, owner of the following described property situated in the City of New Brighton, Ramsey County, Minnesota: That part of the Southwest Quarter of the Northeast Quarter of Section 31, Township 30, Range 23, described as follows: Commencing at the southwest corner of said Northeast Quarter; thence northerly, along the west line of said Northeast Quarter, a distance of 638.00 feet; thence easterly, parallel with the south line of said Northeast Quarter, a distance of 255.00 feet to the point of beginning; thence northerly, parallel with the west line of said Northeast Quarter, a distance of 430.00 feet; thence easterly, parallel with the south line of said Northeast Quarter, a distance of 125.00 feet; thence southerly, parallel with the west line of said Northeast Quarter, a distance of 430.00 feet; thence westerly, parallel with the south line of said Northeast Quarter, a distance of 125.00 feet to the point of beginning.

Has caused the same to be surveyed, platted and known as RIVIERA'S WINDSOR GREEN ADDITION and does hereby dedicate to the public for public use forever a drainage and utility easement, only, over all of Lot 1, Block 3. In witness whereof Windsor Green Association, a Minnesota corporation, has caused these presents to be signed by its proper officers and its corporate seal to be hereunto affixed this 13<sup>th</sup> day of December, 1979.

SIGNED: WINDSOR GREEN ASSOCIATION  
Viola Mode  
 Viola Mode, President  
Lars Lidberg  
 Lars Lidberg, Vice President

STATE OF MINNESOTA )  
 COUNTY OF Ramsey ) The foregoing instrument was acknowledged before me this 13<sup>th</sup> day of December, 1979 by Viola Mode, President and by Lars Lidberg, Vice President, of Windsor Green Association, a Minnesota corporation, on behalf of the corporation.



Larry J. Swick  
 Notary Public, Ramsey County, Minnesota  
 My Commission Expires October 1, 1983

I, Howard W. Rogers, hereby certify that I have surveyed and platted the property described in the dedication of this plat as RIVIERA'S WINDSOR GREEN ADDITION; that this plat is a correct representation of said survey; that all distances are correctly shown on the plat; that all monuments have been correctly placed in the ground as shown; that the outside boundary lines are correctly designated on the plat; and there are no wet lands, easements or public highways other than as shown thereon.

Howard W. Rogers  
 Howard W. Rogers, Land Surveyor  
 Minnesota Registration No. 10945

STATE OF MINNESOTA )  
 COUNTY OF ANOKA ) The Surveyor's certificate was subscribed and sworn to before me, a Notary Public, this 7<sup>th</sup> day of December, 1979.

Marietta L. Zuehlke  
 Notary Public, Anoka County, Minnesota  
 My Commission Expires April 14<sup>th</sup>, 1984

Approved and accepted by the City Council of the City of New Brighton, Minnesota, this 23<sup>rd</sup> day of August, 1979.

James W. Sinden Mayor  
Thomas E. Pedersen Clerk

No delinquent taxes and transfer entered this 29<sup>th</sup> day of February, 1980.  
Law McKenna Director By V. Pars Deputy  
 Department of Property Taxation

Pursuant to Chapter 7, Minnesota Laws of 1976, this plat has been approved this 22<sup>ND</sup> day of February, 1980.

F. R. Kvidera  
 F. R. Kvidera  
 Acting Ramsey County Surveyor

COUNTY RECORDER, COUNTY OF RAMSEY, STATE OF MINNESOTA  
 I hereby certify that this plat of RIVIERA'S WINDSOR GREEN ADDITION was filed in this office this 25<sup>th</sup> day of FEBRUARY, 1980, at 3:00 o'clock, P.M. and was filed in Book 92 of Plats, Page 27, as Document Number 2072098.

By \_\_\_\_\_ Deputy  
Eugene H. Gibbons  
 County Recorder

