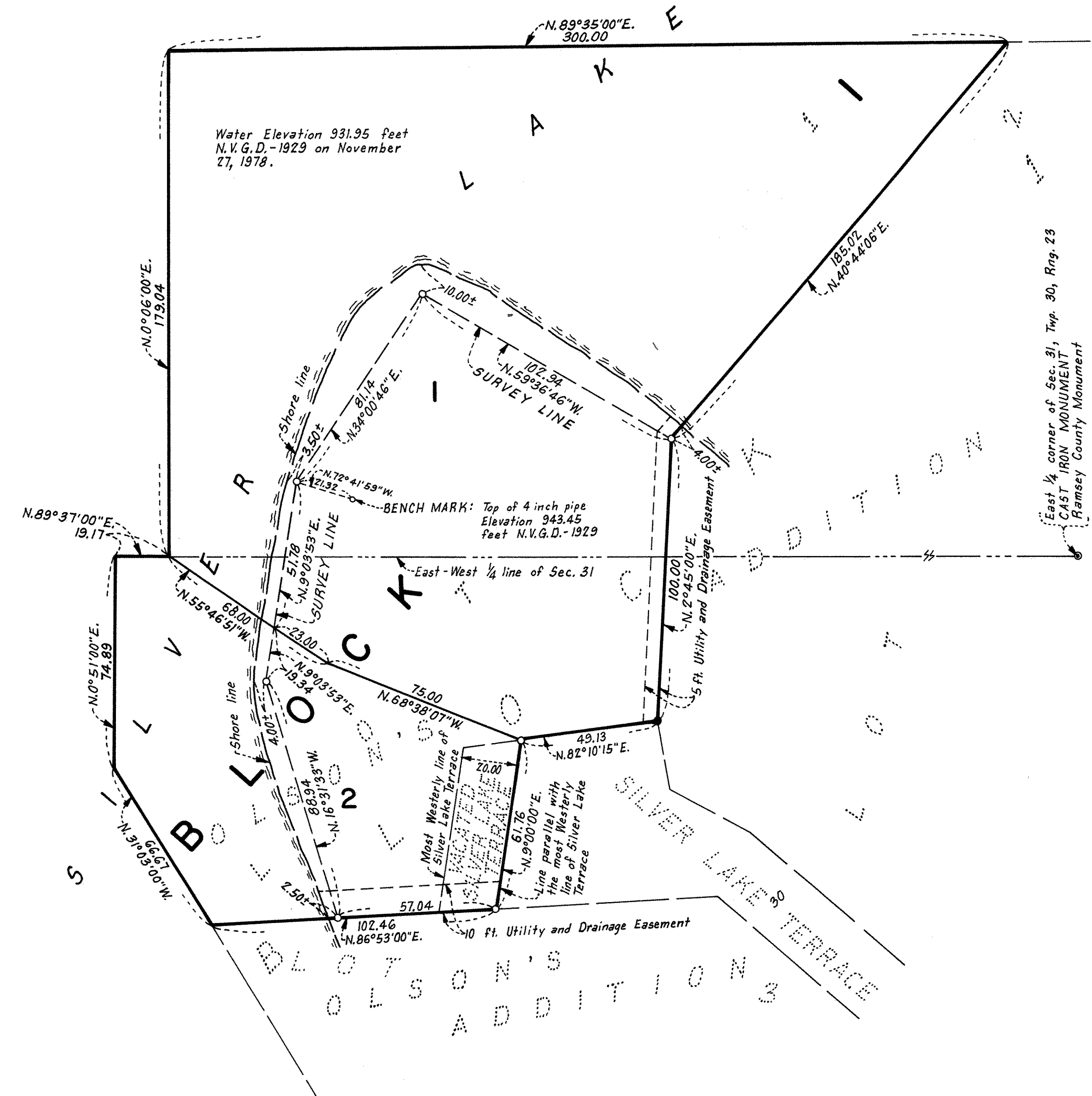


HANSEN'S SILVER LAKE ADDITION



BEARINGS ON AN ASSUMED DATUM
 • DENOTES IRON MONUMENT FOUND
 ○ DENOTES IRON MONUMENT SET
 SCALE: 1 INCH EQUALS 30 FEET
 SCALE IN FEET: 0 30 60 90 120 150

EGAN, FIELD & NOWAK, INC.
 SURVEYORS

Know All Persons By These Presents that Elmer W. Hansen and Grace M. Hansen, husband and wife, owners, and The Central Northwestern National Bank of Minneapolis, a national banking association, mortgagee of the following described property situated in the City of St. Anthony, Ramsey County, Minnesota:

Lot 1, Block 1, OLSON'S ADDITION, according to the plat thereof on file and of record in the office of the County Recorder, Ramsey County, Minnesota.
 Also that Elmer W. Hansen and Grace M. Hansen, husband and wife, owners of the following described property:
 All that part of Silver Lake Terrace as platted in OLSON'S ADDITION, Ramsey County, Minnesota, which lies West-erly of a line 20 feet Easterly of, measured at a right angle to and parallel with the most Westerly line of said Silver Lake Terrace.

Have caused the same to be surveyed, platted and known as HANSEN'S SILVER LAKE ADDITION and do hereby dedicate to the public for public use forever the easements for utility and drainage purposes as shown on the plat. In witness whereof said Elmer W. Hansen and Grace M. Hansen, husband and wife, have hereunto set their hands this 10th day of MARCH, 1979. In witness whereof said The Central Northwestern National Bank of Minneapolis, a national banking association, has caused these presents to be signed by its proper officers and its corporate seal to be hereunto affixed this 10th day of MARCH, 1979.

Elmer W. Hansen
 Elmer W. Hansen
Grace M. Hansen
 Grace M. Hansen

THE CENTRAL NORTHWESTERN NATIONAL BANK OF MINNEAPOLIS
 By Edward S. Gulpin its Vice Pres.
 By J. A. Hatlestad its Sr. Vice Pres.

STATE OF MINNESOTA
 COUNTY OF HENNEPIN The foregoing instrument was acknowledged before me this 10th day of APRIL, 1979, by Elmer W. Hansen and Grace M. Hansen, husband and wife.

VERA E. RANEM
 NOTARY PUBLIC - MINNESOTA
 ANOKA COUNTY
 MY COMMISSION EXPIRES SEPT. 14, 1984

Vera E. Ranem
 Notary Public, ANOKA County, Minnesota.
 My Commission Expires SEPT. 14, 1984

STATE OF MINNESOTA
 COUNTY OF HENNEPIN The foregoing instrument was acknowledged before me this 10th day of April, 1979, by D.A. HATLESTAD its Sr. Vice Pres. and EDWARD L. GRIFFIN its VICE PRES of The Central Northwestern National Bank of Minneapolis, a national banking association, on behalf of the association.

VERA E. RANEM
 NOTARY PUBLIC - MINNESOTA
 ANOKA COUNTY
 MY COMMISSION EXPIRES SEPT. 14, 1984

Vera E. Ranem
 Notary Public, ANOKA County, Minnesota.
 My Commission Expires Sept. 14, 1984

I, Vernon A. Nickols, hereby certify that I have surveyed and platted the property described in the dedication of this plat as HANSEN'S SILVER LAKE ADDITION; that this plat is a correct representation of said survey; that all distances are correctly shown on the plat; that all monuments have been correctly placed in the ground as shown; that the outside boundary lines are correctly designated on the plat; and there are no wet lands, easements, or public highways other than as shown thereon.

Vernon A. Nickols
 Surveyor - Minnesota Registration No. 9053

STATE OF MINNESOTA
 COUNTY OF HENNEPIN The Surveyor's certificate was subscribed and sworn to before me this 3rd day of April, 1979.

Chris Kuntz
 CHRIS KUNTZ, Notary Public, Hennepin County, Minnesota.
 My Commission Expires March 4, 1982.

Approved and accepted by the City Council of the City of St. Anthony, Minnesota, this 24th day of April, 1979.
Hally Heit Mayor Carol B. Johnson Clerk

No delinquent taxes and transfer entered this 2nd day of July, 1979.

Son McFenna Director By J. Fane Deputy
 Department of Property Taxation

Pursuant to Chapter 7, Minnesota Laws of 1976, this plat has been approved this 2ND day of May, 1979.
F. R. Kvidera
 F. R. Kvidera
 Acting Ramsey County Surveyor

COUNTY RECORDER, County of Ramsey, State of Minnesota
 I hereby certify that this plat of HANSEN'S SILVER LAKE ADDITION was filed in this office this 3rd day of MAY, 1979, at 11:45 o'clock A. M. and was filed in Book 91 of Plats, Page 36 as

Document No. 2039936. By _____ Deputy
 Eugene H. Gibbons
 County Recorder