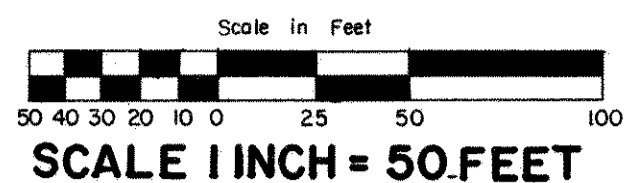


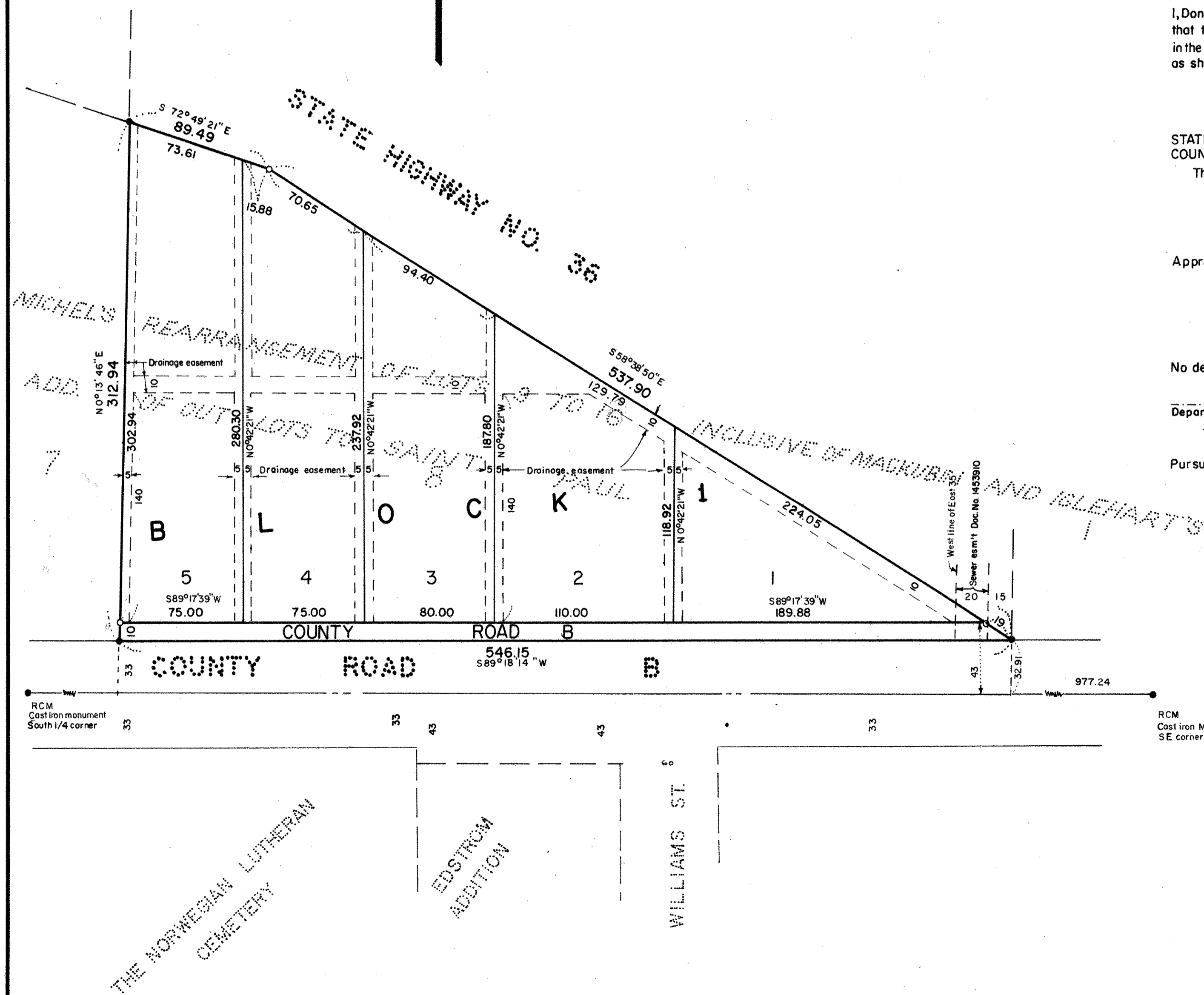
PRZYBILLA ADDITION



CITY OF ROSEVILLE
RAMSEY COUNTY, MINNESOTA

GEORGI-SCHMIDT & ASSOCIATES INC.
LAND SURVEYOR

- Denotes iron pipe monument set
 - Denotes iron monument found in place
- East line of Sec. 12, T29N, R23W is assumed North



Know All Persons By These Presents that Henry Przybilla and Ann J. Przybilla, husband and wife, owners of the following described property situated in the City of Roseville, Ramsey County, Minnesota:

Lot 8, Michel's Rearrangement of Lots 9 to 16 inclusive of Mackubin and Iglehart's Add. of Out Lots to Saint Paul, except taken by State of Minnesota for Highway purposes, also subject to a sewer easement over the west 20.0 feet of the East 35.0 feet thereof.

Have caused the same to be surveyed, platted and known as PRZYBILLA ADDITION and do hereby dedicate to the public for public use forever the road and drainage easements as shown on the plat.

Have hereunto set our hands this 28th day of September, 1978

Signed:

Henry Przybilla
Henry Przybilla

Ann J. Przybilla
Ann J. Przybilla

STATE OF MINNESOTA }
COUNTY OF RAMSEY } SS.

The foregoing instrument was acknowledged before me this 28th day of September, 1978 by Henry Przybilla and Ann J. Przybilla, husband and wife.

Donald W. Schmidt
Notary Public, Ramsey County, Minnesota
My Commission Expires 10-1-1980

Sandra J. Crotty
NOTARY PUBLIC - MINNESOTA
RAMSEY COUNTY
My Comm. Expires Oct. 1, 1980

I, Donald W. Schmidt, hereby certify that I have surveyed and platted the property described in the dedication of this plat as PRZYBILLA ADDITION; that this plat is a correct representation of said survey; that all distances are correctly shown on the plat; that all monuments have been correctly placed in the ground as shown; that the outside boundary lines are correctly designated on the plat; and there are no wet lands, or public highways other than as shown thereon.

Donald W. Schmidt
Land Surveyor - Minnesota Registration No. 10459

STATE OF MINNESOTA }
COUNTY OF RAMSEY } SS.

The Surveyor's certificate was subscribed and sworn to before me, a Notary Public, this 21st day of September, 1978

C. M. Christea
Notary Public, Ramsey County, Minnesota

C. M. Christea
NOTARY PUBLIC - MINNESOTA
RAMSEY COUNTY
My Commission Expires Nov. 6, 1979

Approved and accepted by the City Council of the City of Roseville, Minnesota this 25th day of September, 1978

James J. Deane
Mayor

James J. Deane
Clerk

No delinquent taxes and transfer entered this 28th day of September, 1978

San McFenna
Department of Property Taxation Director

By V. Jans Deputy

Pursuant to Chapter 7, Minnesota Laws of 1976 this plat has been approved this 28th day of September, 1978

F. R. Kvidera
F. R. Kvidera Acting Ramsey County Surveyor

County Recorder, County of Ramsey, State of Minnesota

I hereby certify that this plat of PRZYBILLA ADDITION was filed in this office this 29 day of SEPTEMBER, 1978 at 3:30 o'clock P.M. and was filed in Book 90 of Plats, page 30

Eugene H. Gibbons County Recorder

By _____ Deputy