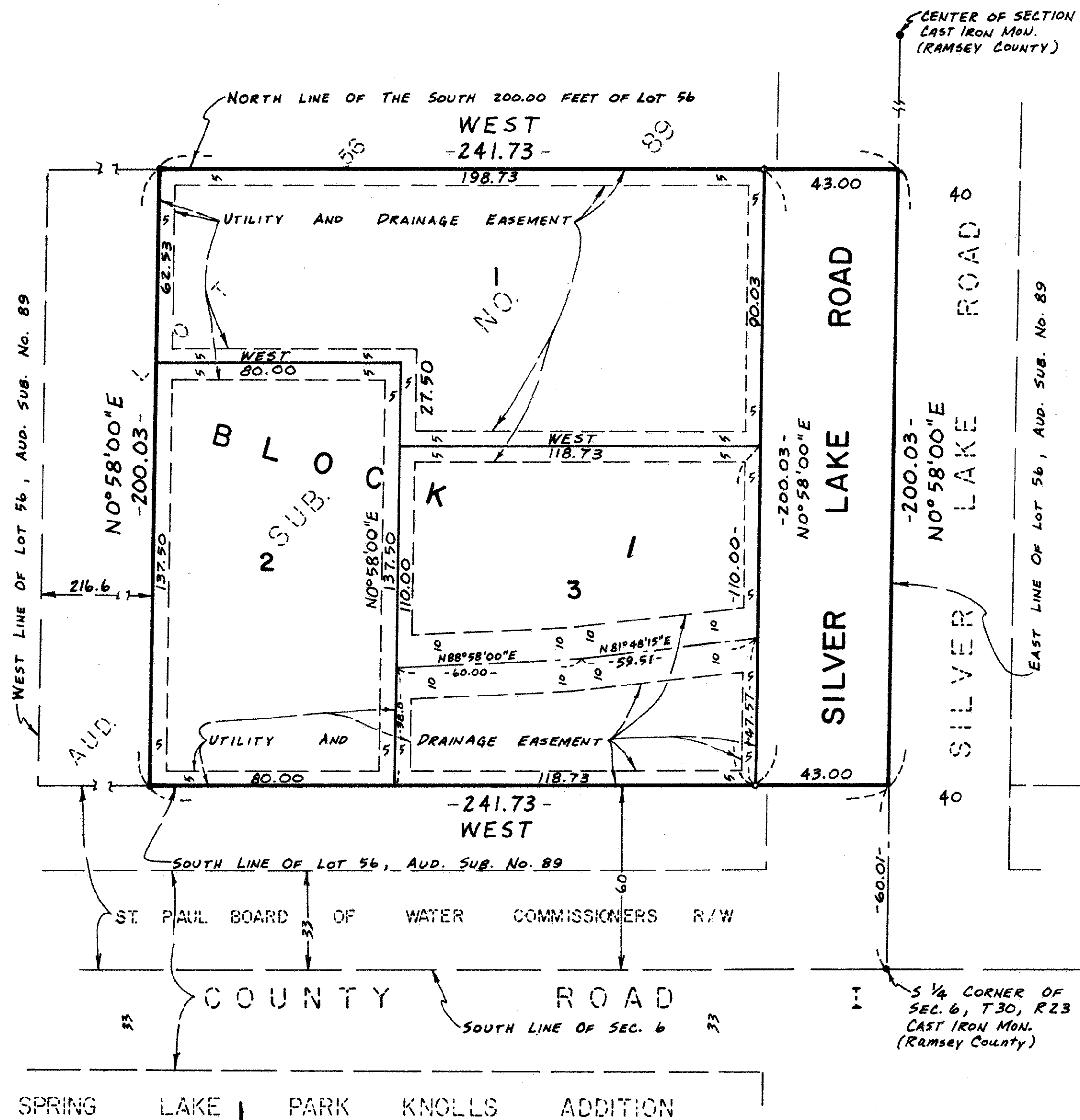


KARLEN'S ADDITION



Know All Persons By These Presents that Glenn G. Karlen and Ursula Karlen, his wife, owners, of the following described property situate in the City of Mounds View, Ramsey County, Minnesota:

The South 200 feet of Lot 56, Auditor's Subdivision No. 89, Ramsey Co., Minn., except the West 216.6 feet thereof.

Have caused the same to be surveyed, platted and known as KARLEN'S ADDITION and do hereby dedicate to the public for public use forever the Road and utility and drainage easements as shown on the plat. In witness whereof said Glenn G. Karlen and Ursula Karlen, his wife, have hereunto set their hands this 16 day of AUG 1978.

Signed:

Glenn G. Karlen
Glenn G. Karlen

Ursula Karlen
Ursula Karlen

State of Minnesota
County of Ramsey The foregoing instrument was acknowledged before me this 16th day of August 1978, by Glenn G. Karlen and Ursula Karlen, his wife.

Raymond A. Prasch
Notary Public, Ramsey County, Minnesota
My Commission Expires July 10, 1980

I Raymond A. Prasch, hereby certify that I have surveyed and platted the property described in the dedication of this plat as KARLEN'S ADDITION; that this plat is a correct representation of said survey; that all distances are correctly shown on the plat; that all monuments have been correctly placed in the ground as shown; that the outside boundary lines are correctly designated on the plat; and there are no wet lands, easements or public highways other than as shown thereon.

Raymond A. Prasch
Raymond A. Prasch, Registered Land Surveyor
Minnesota Registration No. 6743

State of Minnesota
County of Hennepin The surveyor's certificate was subscribed and sworn to before me, a Notary Public, this 14th day of August 1978.

Gerald T. Coyne
Gerald T. Coyne, Notary Public, Hennepin County, Minnesota
My Commission Expires September 14, 1983

Approved and accepted by the City Council of the City of Mounds View, Minnesota, this 14th day of August 1978.

Donald C. Hedges
Mayor

Mark Achen
Clerk

No delinquent taxes and transfer entered this 17th day of August 1978.

Lois McKenna Director By B. E. Southwick Deputy
Department of Property Taxation

Pursuant to Chapter 7, Minnesota Laws of 1976, this plat has been approved this 17th day of August 1978.

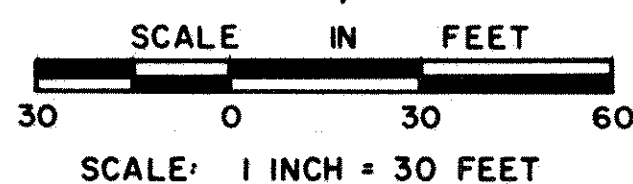
F. R. Kvidera
F. R. Kvidera, Acting Ramsey County Surveyor

REGISTRAR OF TITLES, COUNTY OF RAMSEY, STATE OF MINNESOTA

I hereby certify that this plat of KARLEN'S ADDITION was filed in this office this 17 day of AUGUST 1978 at 3:20 o'clock P.M. and was filed in Book 30 of Plats, Page 45.

By _____ Deputy
Eugene H. Gibbons, Registrar of Titles

Bearings shown are on an assumed datum
June, 1978
● Indicates Iron Monument Found
○ Indicates Iron Monument Set



LOT SURVEYS COMPANY
LAND SURVEYORS