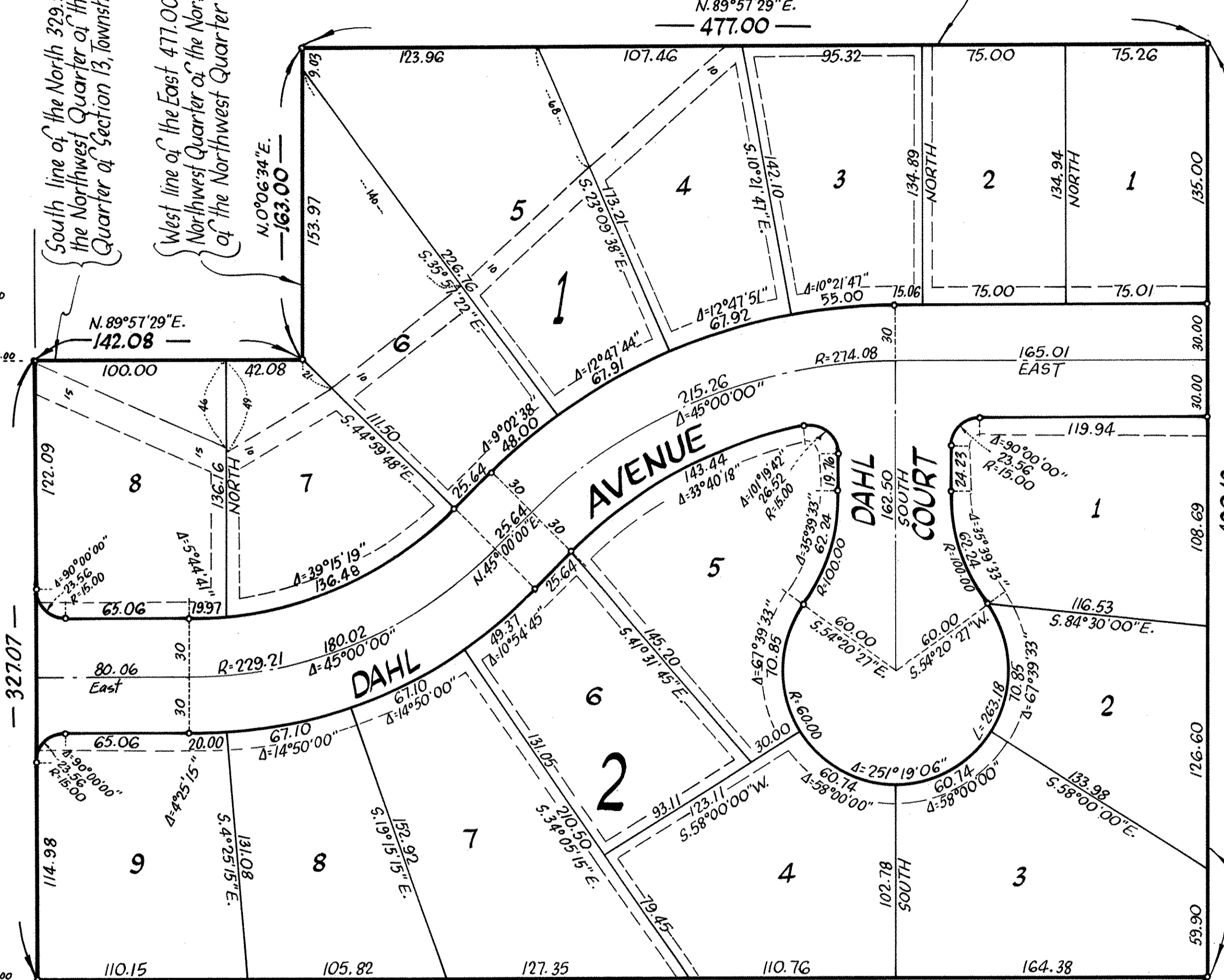


# VAN DAHL ADDITION

Northwest corner of Sec. 13, Township 28, Range 22 (Ramsey County cast iron mon.)

South line of the North 166.50 feet of the Northwest Quarter of the Northwest Quarter of the Northwest Quarter of Section 13, Township 28, Range 22.



West line of the Northwest Quarter of Section 13, Township 28, Range 22.

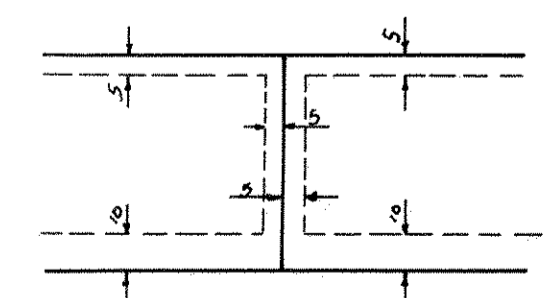
South line of the North 329.50 feet of the Northwest Quarter of the Northwest Quarter of Section 13, Township 28, Range 22.  
West line of the East 477.00 feet of the Northwest Quarter of the Northwest Quarter of Section 13.

East line of the Northwest Quarter of the Northwest Quarter of the Northwest Quarter of Section 13, Township 28, Range 22.

W/4 corner of Sec. 13, T. 28, R. 22 (Ramsey County cast iron mon.)

South line of the Northwest Quarter of the Northwest Quarter of the Northwest Quarter of Section 13.

DRAINAGE AND UTILITY EASEMENTS ARE SHOWN THUS:



being 5 feet in width, unless otherwise indicated, as shown on the plat and 10 feet in width and adjoining street lines, as shown on the plat



GRAPHIC SCALE IN FEET

Scale: 1 inch = 50 feet

FEBRUARY, 1978

o Denotes iron monument set

Bearings shown are on an assumed datum

**UBURBAN ENGINEERING, INC.**  
—Engineers—  
—Surveyors—

KNOW ALL PERSONS BY THESE PRESENTS: That Mike Dahl Construction, Inc., a Minnesota corporation, owner and Northwestern State Bank, St. Paul, Minnesota, a Minnesota corporation, mortgagee of the following described property situated in the City of Maplewood, Ramsey County, Minnesota:

The Northwest 1/4 of the Northwest 1/4 of the Northwest 1/4 of Section 13, Township 28, Range 22, except the North 166.50 feet thereof and except that part of the South 163.00 feet of the North 329.50 feet thereof which lies West of the East 477.00 feet thereof.

Have caused the same to be surveyed, platted and known as VAN DAHL ADDITION and do hereby dedicate to the public for public use forever the avenue, court, drainage and utility easements as shown on this plat. In witness whereof said Mike Dahl Construction, Inc. has caused these presents to be signed by its proper officer this 25th day of July, 1978 and in witness whereof said Northwestern State Bank, St. Paul, Minnesota has caused these presents to be signed by its proper officers and its corporate seal to be hereunto affixed this 25th day of July, 1978.

SIGNED:  
MIKE DAHL CONSTRUCTION, INC.  
*Michael R. Dahl*  
Michael R. Dahl, President

NORTHWESTERN STATE BANK, ST. PAUL, MINNESOTA  
By *Steve Adams* Its Vice President By *Steve Adams* Its Controller

STATE OF MINNESOTA The foregoing instrument was acknowledged before me, a Notary Public, this 25th day of July, 1978 by Michael R. Dahl, President of Mike Dahl Construction, Inc., a Minnesota corporation, on behalf of the corporation.

*Juan M. Strasser*  
Notary Public, Ramsey County, Minnesota  
My Commission Expires *APR 14, 1984*

STATE OF MINNESOTA The foregoing instrument was acknowledged before me, a Notary Public, this 25th day of July, 1978 by *Axel E. Olsson, Jr.* its Vice President and *Steve R. Adams* its Controller of Northwestern State Bank, St. Paul, Minnesota, a Minnesota corporation, on behalf of the corporation.

*Juan M. Strasser*  
Notary Public, Ramsey County, Minnesota  
My Commission Expires *APR 14, 1984*

I, Howard W. Rogers, hereby certify that I have surveyed and platted the property described in the dedication of this plat as VAN DAHL ADDITION; that this plat is a correct representation of said survey; that all distances are correctly shown on the plat; that all monuments have been correctly placed in the ground as shown; that the outside boundary lines are correctly designated on the plat; and there are no wet lands, or public highways other than as shown thereon.

*Howard W. Rogers*  
Howard W. Rogers, Land Surveyor  
Minnesota Registration No. 10945

STATE OF MINNESOTA The Surveyor's certificate was subscribed and sworn to before me, a Notary Public, COUNTY OF ANOKA this 18th day of July, 1978.

*Marietta L. Zuehlke*  
Notary Public, Anoka County, Minnesota  
My Commission Expires *APR 14, 1984*

Approved and accepted by the City Council of the City of Maplewood, Minnesota, this 3rd day of August, 1978.

*John Greaves* Mayor *Lucretia E. Amelina* Clerk

No delinquent taxes and transfer entered this 14th day of August, 1978.

*Law McKenna* Director By *Edna* Deputy  
Department of Property Taxation

Pursuant to Chapter 7, Minnesota Laws of 1976, this plat has been approved this 15th day of August, 1978.

*F. R. Kvidera*  
F. R. Kvidera  
Acting Ramsey County Surveyor

COUNTY RECORDER  
COUNTY OF RAMSEY, STATE OF MINNESOTA

I hereby certify that this plat of VAN DAHL ADDITION was filed in this office this 16 day of August, 1978 at 9 o'clock A.M. and was filed in book 90 of plats, page 14.

DOCUMENT # 2013205

Eugene H. Gibbons, County Recorder  
By \_\_\_\_\_ Deputy