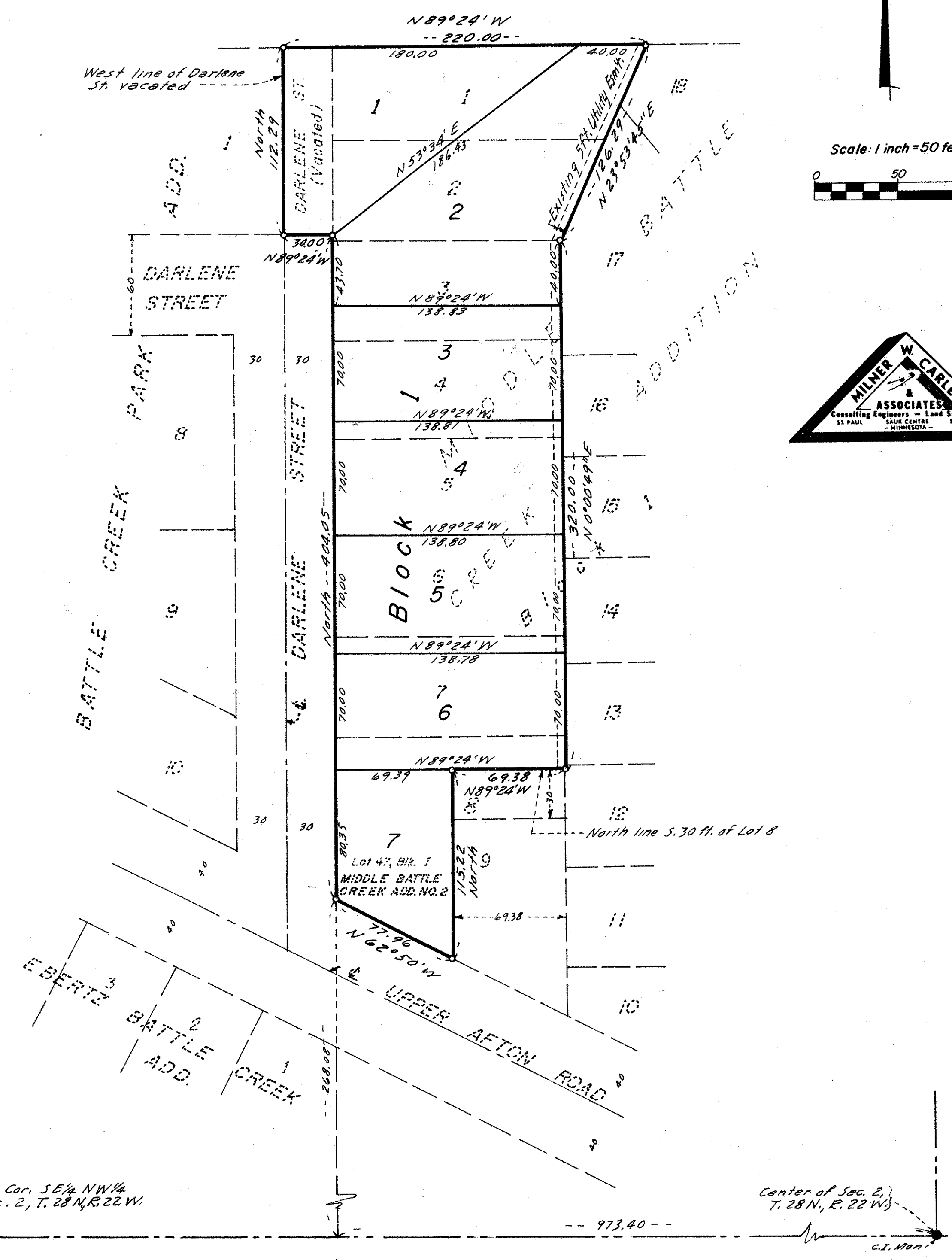


# DARLENE ADDITION

o INDICATES IRON MONUMENTS  
BEARINGS ARE ON AN ASSUMED DATUM



Know All Persons By These Presents that Emily E. Peterson, single, owner of the following described property situated in the City of St. Paul, Ramsey County, Minnesota:

Lots 1 through 7 and that part of Lot 8, lying North of the South 30 feet, Block 1, MIDDLE BATTLE CREEK ADDITION and Lot 47, Block 1, MIDDLE BATTLE CREEK ADDITION NO. 2, all in the City of St. Paul, Ramsey County, Minnesota and the North 112.29 feet of Darlene Street vacated, as platted in MIDDLE BATTLE CREEK ADDITION.

Have caused the same to be surveyed, platted and known as DARLENE ADDITION.

Has hereunto set her hand this 20 day of MARCH, 1978.

Signed:

Emily E. Peterson  
Emily E. Peterson

STATE OF MINNESOTA )  
COUNTY OF RAMSEY ) ss The foregoing instrument was acknowledged before me this 20 day of MARCH 1978 by Emily E. Peterson, single

SHIRLEY J. LUNDBERG  
RAMSEY COUNTY  
NOTARY PUBLIC-MINNESOTA  
MY COMMISSION EXPIRES APR. 29, 1984

Shirley J. Lundberg  
Notary Public, RAMSEY County, Minnesota  
My Commission Expires: 4-29-1984

I, LeRoy H. Winner, hereby certify that I have surveyed and platted the property described in the dedication of this plat as DARLENE ADDITION; that this plat is a correct representation of said survey, that all distances are correctly shown on the plat; that all monuments have been correctly placed in the ground as shown; that the outside boundary lines are correctly designated on the plat; and there are no wet lands, easements or public highways other than as shown thereof.

LeRoy H. Winner  
LeRoy H. Winner, Registered Surveyor  
Minnesota Certificate No. 4987

STATE OF MINNESOTA )  
COUNTY OF RAMSEY ) ss The Surveyor's certificate was subscribed and sworn to before me, a Notary Public, this 10 day of MARCH 1978

SHIRLEY J. LUNDBERG  
RAMSEY COUNTY  
NOTARY PUBLIC-MINNESOTA  
MY COMMISSION EXPIRES APR. 29, 1984

Shirley J. Lundberg  
Notary Public, RAMSEY County, Minnesota  
My Commission Expires: 4-29-1984

Approved and accepted by the City Council of St. Paul, Minnesota this 11<sup>th</sup> day of APRIL, 1978.

Rose M. [Signature]  
Clerk

No delinquent taxes and transfer entered this 18<sup>th</sup> day of May, 1978.

Law McKenna Director  
Department of Property Taxation  
By M. Welsher Deputy

County Recorder, County of Ramsey, State of Minnesota

I hereby certify that this plat of DARLENE ADDITION was filed in this office this \_\_\_\_\_ day of \_\_\_\_\_, 1978 at \_\_\_\_\_ o'clock \_\_\_\_\_ M. and was filed in book \_\_\_\_\_ of plats, page \_\_\_\_\_ and that the copies were compared with the official plat and found to be true and correct copies thereof.

Eugene H. Gibbons County Recorder  
By \_\_\_\_\_ Deputy

Pursuant to Chapter 7, Minnesota Laws of 1976, this plat has been approved this 18<sup>th</sup> day of MAY, 1978.

F.R. Kvidera  
F.R. Kvidera  
Acting Ramsey County Surveyor