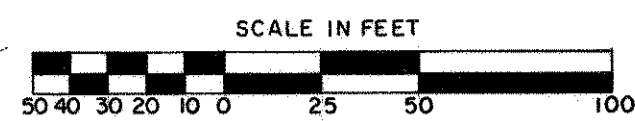


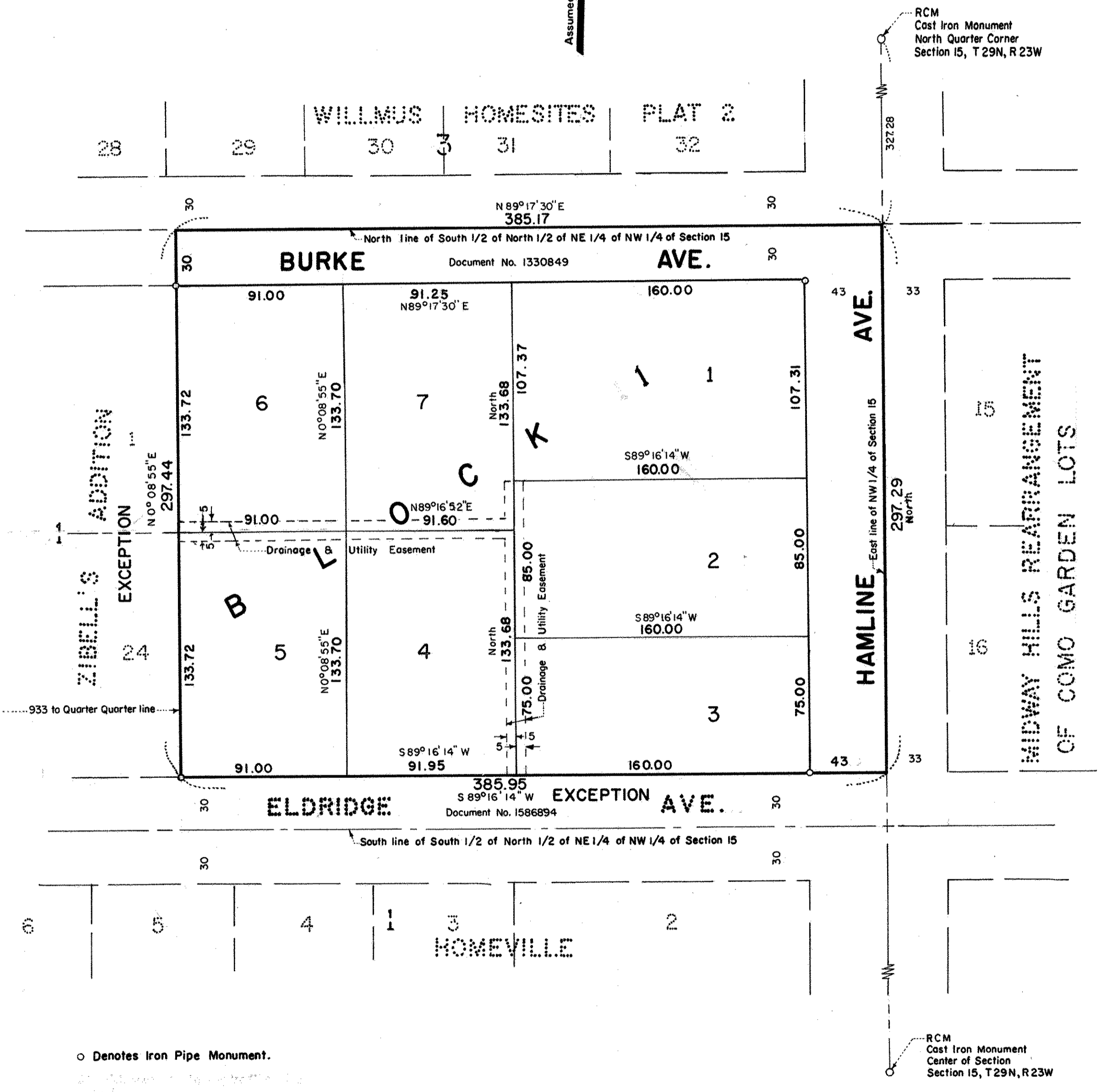
ZIBELL'S HOMESTEAD ADDITION



Scale inch = 50 feet

CITY OF ROSEVILLE
RAMSEY COUNTY, MINNESOTA

CHARLES O. GEORGI COMPANY
CIVIL ENGINEERING & LAND SURVEYING



o Denotes Iron Pipe Monument.

East line of NW 1/4 of Section 15, T29N, R23W, is assumed as bearing North.

Know All Persons By These Presents that:

Harold E. Zibell and Donna M. Zibell, husband and wife,
Herbert A. Kath and Ruth B. Kath, husband and wife, and
Minnesota Federal Savings and Loan Association, a United States corporation,

owners of the following described property situated in the City of Roseville, Ramsey County, Minnesota:

The South 1/2 of the North 1/2 of the NE 1/4 of the NW 1/4 of Section 15, Township 29, Range 23, except the West 933 feet thereof and except the South 30 feet thereof. Subject to easements of record.

Have caused the same to be surveyed, platted and known as ZIBELL'S HOMESTEAD ADDITION and do hereby dedicate to the public for public use forever the avenues, and drainage and utility easements as shown on the plat.

Have hereunto set our hands this 31st day of March, 1978.

Signed: Harold E. Zibell Donna M. Zibell
Harold E. Zibell Donna M. Zibell

Have hereunto set our hands this 31st day of March, 1978.

Signed: Herbert A. Kath Ruth B. Kath
Herbert A. Kath Ruth B. Kath

Have hereunto set our hands and seal this 31st day of March, 1978.

Signed: Minnesota Federal Savings and Loan Association, a United States corporation.

Name: Fred Bjorklund Title: Pres.
Name: Dolores M. Brekken Title: Asst. Secy

I, Charles O. Georgi, hereby certify that I have surveyed and platted the property described in the dedication of this plat as ZIBELL'S HOMESTEAD ADDITION; that this plat is a correct representation of said survey; that all monuments have been correctly placed in the ground as shown; that all distances are correctly shown on the plat; that the outside boundary lines are correctly designated on the plat; and there are no wet lands, easements or public highways other than as shown hereon.

Charles O. Georgi
Registered Land Surveyor No. 3960

State of Minnesota }
County of Ramsey } s.s.

The Surveyor's certificate was subscribed and sworn to before me, a Notary Public, this 31st day of March, 1978.

Sandra J. Crotty
Notary Public, Ramsey County, Minnesota
My Comm. Expires Oct. 1, 1980

Approved and accepted by the City Council of Roseville, Minnesota, this 10th day of April, 1978.

James J. Thomas Mayor
James J. Audie Clerk

No delinquent taxes and transfer entered this 12th day of April, 1978.

Lawrence McKeena Director By Ray Calundann Deputy
Department of Property Taxation

Pursuant to Chapter 7, Minnesota Laws of 1976, this plat has been approved this 12th day of April, 1978.

F. R. Kvidera
F. R. Kvidera
Acting Ramsey County Surveyor

County Recorder, County of Ramsey, State of Minnesota
I hereby certify that this plat of ZIBELL'S HOMESTEAD ADDITION was filed in this office this 31st day of March, 1978, at 10 o'clock AM and was filed in Book 197 of Plats, Page 1 and that the copies were compared with the Official Plat and found to be true and correct copies thereof.

Eugene H. Gibbons County Recorder

By _____ Deputy

State of Minnesota }
County of Ramsey } s.s.

The foregoing instrument was acknowledged before me this 31st day of March, 1978, by Harold E. Zibell and Donna M. Zibell, husband and wife.

Larry D. Dunn
Notary Public, Ramsey County, Minnesota
My Commission Expires _____

State of Minnesota }
County of Ramsey } s.s.

The foregoing instrument was acknowledged before me this 5th day of April, 1978, by Fred Bjorklund its Pres. and by Dolores M. Brekken its Asst. Secy of Minnesota Federal Savings and Loan Association, a United States corporation, on behalf of the corporation.

Marianne E. Rosenberg
Notary Public, Ramsey County, Minnesota
My Commission Expires _____

Marianne E. Rosenberg
Notary Public - Minnesota
Ramsey County
My Comm. Expires Aug. 20, 1982

State of Minnesota }
County of Ramsey } s.s.

The foregoing instrument was acknowledged before me this 31st day of March, 1978, by Herbert A. Kath and Ruth B. Kath, husband and wife.

Larry D. Dunn
Notary Public, Ramsey County, Minnesota
My Commission Expires _____

Larry D. Dunn
Notary Public - Minnesota
Ramsey County
My Comm. Expires July 29, 1980

Larry D. Dunn
Notary Public - Minnesota
Ramsey County
My Comm. Expires July 29, 1980

Abstract # 1997681