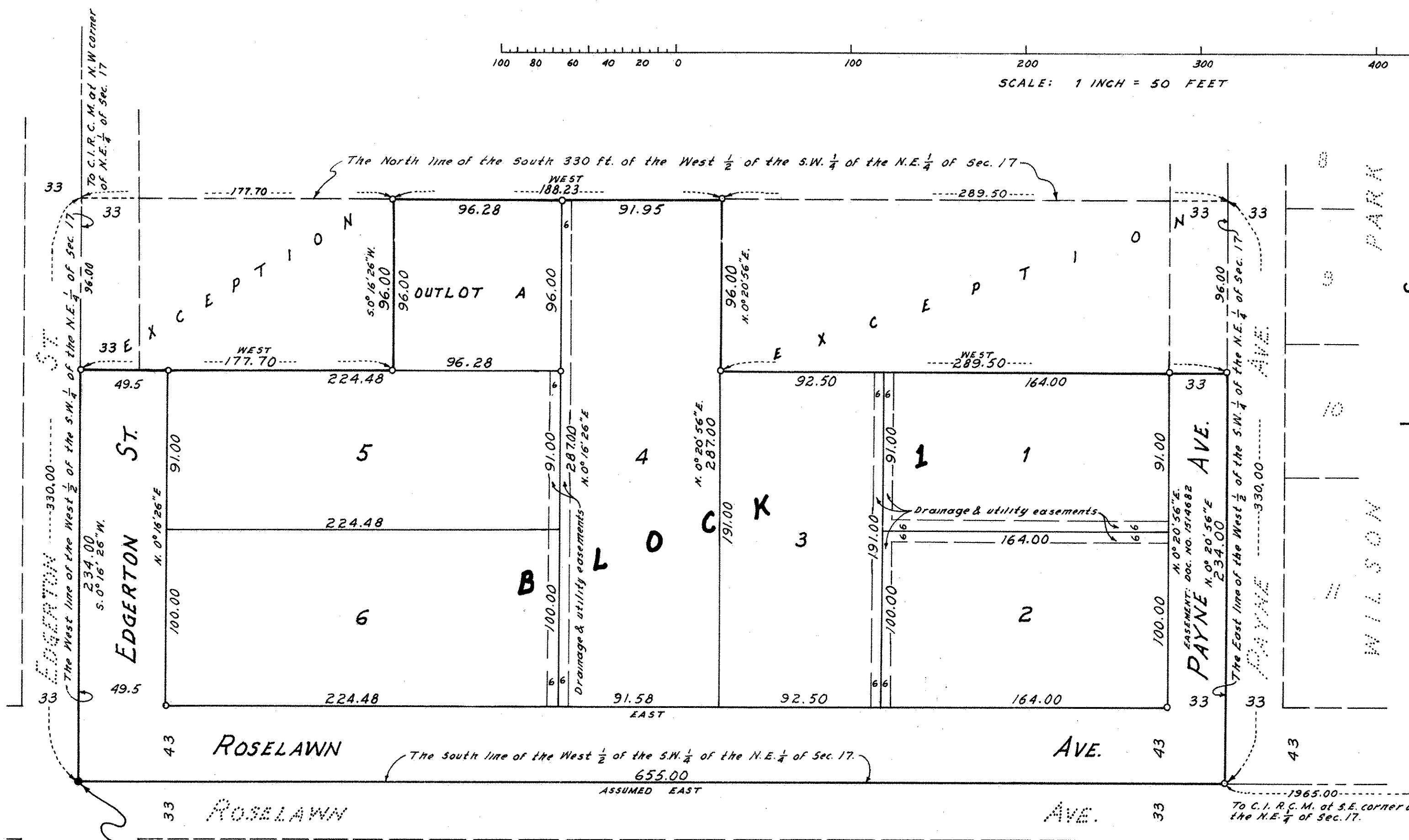
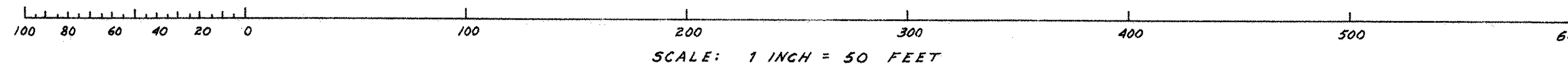


KORTUS ADDITION

o Indicates iron monument set.

Bearings shown are on an assumed datum.



No delinquent taxes and transfer entered this 17th day of November, 1977.

Len McKenna Director
Department of Property Taxation

By ry Osund Deputy

COUNTY RECORDER, COUNTY OF RAMSEY, STATE OF MINNESOTA

I hereby certify that this plat of KORTUS ADDITION was filed in this office this _____ day of _____, 1977, at _____ o'clock _____ M. and was filed in Book _____ of Plats, Page _____, and that the copies were compared with the Official Plat and were found to be true and correct copies thereof.

Robert T. Gibbons, County Recorder

By _____ Deputy

Pursuant to Chapter 7, Minnesota Laws of 1976, this plat has been approved this 17th day of November, 1977.

By F. R. Kvidera
F. R. Kvidera, Acting County Surveyor

Approved and accepted by the City Council of Maplewood, Minnesota, this 10th day of November, 1977.

Burton A. Murdoch Mayor
Louise E. Russell Clerk

Know All Persons By These Presents that I, Donald V. Kortus, widower, unmarried, owner of the following described property situated in the City of Maplewood, Ramsey County, Minnesota:

The South 330 feet of the West 1/2 of the Southwest 1/4 of the Northeast 1/4 of Section 17, Township 29, Range 22; except the West 177.7 feet thereof; and except the East 289.50 feet of the North 96 feet thereof; subject to drainage easement as recorded in Book 231 of Ramsey County Miscellaneous Records on Page 242.

Has caused the same to be surveyed, platted and known as KORTUS ADDITION, and do hereby dedicate to the public for public use forever the street, avenues and drainage and utility easements as shown on the plat.

And have hereunto set my hand and seal this 7th day of November, 1977.

Signed: Donald V. Kortus
Donald V. Kortus

State of Minnesota } S.S.
County of Ramsey }

The foregoing instrument was acknowledged before me this 7th day of November, 1977, by Donald V. Kortus, widower, unmarried.

Gerald J. Fischer
NOTARY PUBLIC - MINNESOTA
RAMSEY COUNTY
My Commission Exp. Dec. 11, 1981

Gerald J. Fischer
Notary Public, Ramsey County, Minnesota
My commission expires December 11, 1981

I, John R. Turpin, hereby certify that I have surveyed and platted the property described in the dedication of this plat as KORTUS ADDITION; that this plat is a correct representation of said survey; that all distances are correctly shown on the plat; that all monuments have been correctly placed in the ground as shown; that the outside boundary lines are correctly designated on the plat; and there are no wet lands, easements or public highways other than as shown thereon.

John R. Turpin
Minnesota Registration No. 6740

State of Minnesota } S.S.
County of Ramsey }

The Surveyor's certificate was subscribed and sworn to before me, a Notary Public, this 7th day of November, 1977.

Ruth E. Eggum
Notary Public, Ramsey County, Minnesota.
My commission expires June 25, 1981

Ruth E. Eggum
Notary Public
Ramsey County, Minn.
Commission Expires
JUNE 25, 1981

Abstract # 1935071

Kortus ADDITION