

# LEMKE'S 5<sup>TH</sup> ADDITION

KNOW ALL PERSONS BY THESE PRESENTS that Building Coordinators, Inc., a Minnesota corporation, owner and First Robbinsdale State Bank, a Minnesota corporation, mortgagee of the following described property situated in the City of White Bear Lake, Ramsey County, Minnesota.

The West 245 feet of the East 1466.874 feet of the South half of the Southeast quarter of Section 15, Township 30, Range 22, Ramsey County, Minnesota, except the North 433.09 feet thereof, and except the South 495 feet of the East 122.50 feet thereof.

and that Jens G. Kragness and Gloria Kragness husband and wife, owners of the following described property situated in the City of White Bear Lake, Ramsey County, Minnesota.

The East 122.50 feet of the West 245 feet of the East 1466.874 feet of the South 495 feet of the South half of the Southeast quarter of Section 15, Township 30, Range 22, Ramsey County, Minnesota.

Have caused the same to be surveyed, platted and known as LEMKE'S 5<sup>TH</sup> ADDITION and do hereby dedicate to the public for the public use forever the utility easements, lane, street and highway as shown on the plat. In witness whereof said Building Coordinators, Inc., has caused these presents to be signed by its proper officers this 12<sup>th</sup> day of October, 1977. In witness whereof said First Robbinsdale State Bank has caused these presents to be signed by its proper officers and its corporate seal to be hereunto affixed this 11<sup>th</sup> day of October, 1977. In witness whereof said Jens G. Kragness and Gloria Kragness, husband and wife have hereunto set our hands this 12<sup>th</sup> day of October, 1977.

BUILDING COORDINATORS, INC.

by Eugene H. Lemke its President

Jens G. Kragness  
Jens G. Kragness

FIRST ROBBINSDALE STATE BANK

by J. David Waddington its Vice President

by Robert J. Bird its Vice-President

Gloria Kragness  
Gloria Kragness

by Patricia its Vice President

State of Minnesota)  
County of Hennepin

The foregoing instrument was acknowledged before me this 12<sup>th</sup> day of October, 1977 by Eugene H. Lemke, its President and by Robert J. Bird, its Vice-President of Building Coordinators, Inc., a Minnesota corporation, on behalf of the corporation.

Judith M. Schack  
Notary Public Hennepin County, Minnesota  
My Commission Expires 12/3/82

State of Minnesota)  
County of Hennepin

The foregoing instrument was acknowledged before me this 11<sup>th</sup> day of October, 1977 by J. David Waddington, its VICE - PRESIDENT and by R. E. Becker, its VICE - PRESIDENT of First Robbinsdale State Bank, a Minnesota corporation, on behalf of the corporation.

J. David Waddington  
Notary Public  
My Commission Expires March 22, 1978

Robert M. Berglund  
Notary Public Hennepin County, Minnesota  
My Commission Expires 3/21/78

State of Minnesota)  
County of Hennepin

The foregoing instrument was acknowledged before me this 12<sup>th</sup> day of October 1977 by Jens G. Kragness and Gloria Kragness, husband and wife.

Judith M. Schack  
Notary Public  
My Commission Expires 12/3/82

Judith M. Schack  
Notary Public Hennepin County, Minnesota  
My Commission Expires 12/3/82

I, Ernest G. Rud, hereby certify that I have surveyed and platted the property described in the dedication of this plat as LEMKE'S 5<sup>TH</sup> ADDITION; that this plat is a correct representation of said survey; that all distances are correctly shown on the plat; that all monuments have been correctly placed in the ground as shown; that the outside boundary lines are correctly designated on the plat; and there are no wet lands, easements or public highways other than as shown thereon.

State of Minnesota)  
County of Anoka

The Surveyor's certificate was subscribed and sworn to before me, a Notary Public, this 7<sup>th</sup> day of October, 1977.

Marian E. Rud  
Notary Public - Minnesota  
My Commission Expires May 23, 1984

Marian E. Rud  
Notary Public, Anoka County, Minnesota  
My Commission Expires May 23, 1984

Approved and accepted by the City Council of the City of White Bear Lake, Minnesota, this 12<sup>th</sup> day of October, 1977.

Robert J. Bird  
Mayor

Raymond R. Stiebner  
Clerk

No delinquent taxes and transfer entered this 17<sup>th</sup> day of October, 1977.

Lawrence, Director  
Department of Property Taxation

By John, Deputy

Pursuant to Chapter 7, Minnesota Laws of 1976, this plat has been approved this 17<sup>th</sup> day of October, 1977.

By Ronald F. Meyer  
Ronald F. Meyer  
Acting Ramsey County Surveyor

County Recorder  
County of Ramsey, State of Minnesota

I hereby certify that this plat of LEMKE'S 5<sup>TH</sup> ADDITION was filed in this office this \_\_\_\_\_ day of \_\_\_\_\_, 1977 at \_\_\_\_\_ o'clock \_\_\_\_\_ M. and was filed in Book \_\_\_\_\_ of Plats, Page \_\_\_\_\_ and that the copies were compared with the Official Plat and found to be true and correct copies thereof.

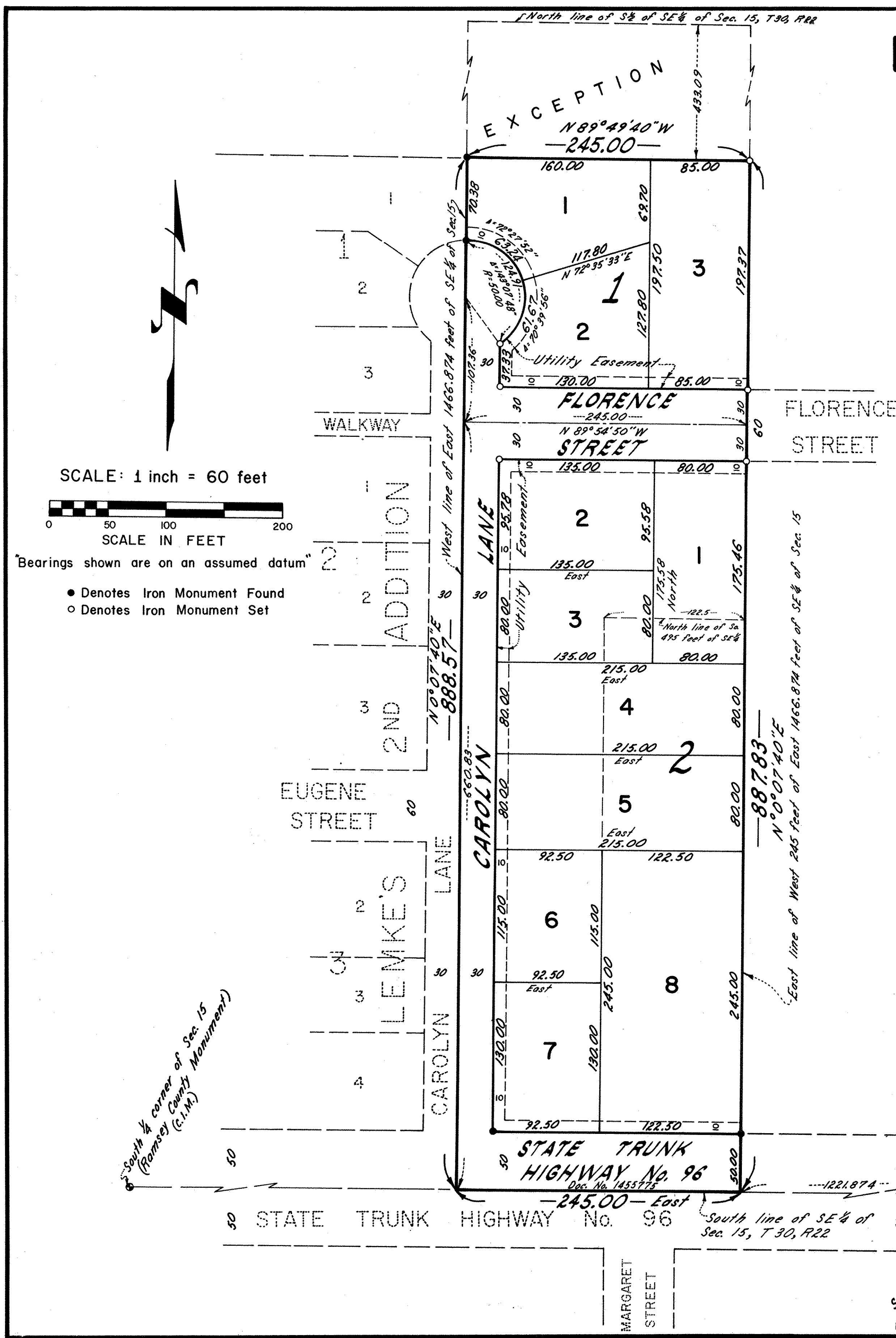
Robert T. Gibbons  
County Recorder

By \_\_\_\_\_  
Deputy

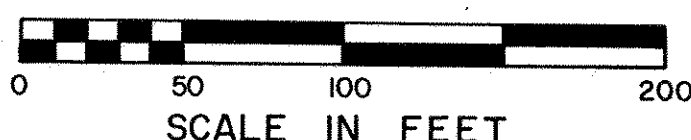
E. G. RUD & SONS, INC.  
LAND SURVEYORS

Abstract # 1931927

## LEMKE'S 5<sup>th</sup> Addition



SCALE: 1 inch = 60 feet



Bearings shown are on an assumed datum

- Denotes Iron Monument Found
- Denotes Iron Monument Set

South 1/4 corner of Sec. 15 (Ramsey County Monument) (C.I.M.)

SE corner of SE 1/4 of Sec. 15, T30, R22 (Ramsey Co. Monument) (C.I.M.)