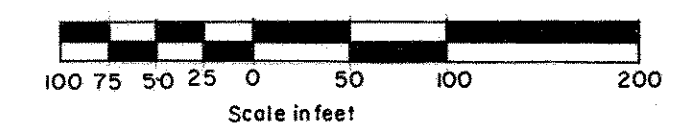


HEIGHTS OF JOHANNA LAKE

SCALE 1 INCH = 100 FEET



CITY OF ARDEN HILLS
RAMSEY COUNTY, MINNESOTA

CHARLES O. GEORGI COMPANY
CIVIL ENGINEERING & LAND SURVEYING

Know All Persons By These Presents that
C.G. Rein Company, a Minnesota corporation

owner of the following described property situated in the City of Arden Hills, Ramsey County, Minnesota:

All that part of the West 1/2 of the SW 1/4 of Section 33, T30, R23 which lies West of the East 330 feet thereof; which lies Easterly of the Southeasterly line of the St. Croix Falls Minnesota Improvement Company right-of-way; which lies Southwesterly of the following described line: beginning at the Southeast corner of the NW 1/4 of the SW 1/4 of said Section 33, thence West 330.0 feet along the South line of the NW 1/4 of the SW 1/4 of said Section 33; thence N 60° 03' W 339.63 feet to the Easterly line of the St. Croix Falls Minnesota Improvement Company right-of-way and there terminating; and which lies Northerly of the following described line: beginning at a point on the West line of the SW 1/4 of the SW 1/4 distant 747.0 feet North of the Southwest corner of said SW 1/4 of the SW 1/4; thence S 89° 54' 57" E, (assumed bearing) parallel with the South line of said SW 1/4 of the SW 1/4 a distance of 256.88 feet to a point on the Southeasterly line of said St. Croix Falls Minnesota Improvement Company right-of-way; thence continuing S 89° 54' 57" E 480.12 feet; thence Northeasterly on a tangential curve to the left having a radius of 227.98 feet a distance of 98.44 feet; thence N 65° 20' 37" E tangent to said curve a distance of 107.69 feet; thence Northeasterly on a tangential curve to the right, having a radius of 138.07 feet, a distance of 59.08 feet to the West line of the East 330 feet of said SW 1/4 of the SW 1/4 and there terminating, Ramsey County, Minnesota

I, Charles O. Georgi, hereby certify that I have surveyed and plotted the property described in the dedication of this plat as HEIGHTS OF JOHANNA LAKE; that this plat is a correct representation of said survey; that all distances are correctly shown on the plat; that all monuments have been correctly placed in the ground as shown; that the outside boundary lines are correctly designated on the plat; and there are no wet lands, easements or public highways other than as shown thereon.

Charles O. Georgi
Minnesota Registered Land Surveyor No. 3960

STATE OF MINNESOTA } S.S.
COUNTY OF RAMSEY }

The Surveyor's certificate was subscribed and sworn to before me, a Notary Public, this 16th day of August, 1977.

Joan D. Crow
Notary Public, Ramsey County, Minnesota
My Commission Expires 10-2-80

Approved and accepted by the City Council of Arden Hills, Minnesota, this 18th day of August, 1977.

Richard J. DeLuca Mayor
Charlotte M. Neish Clerk

No delinquent taxes and transfer entered this 16th day of August, 1977.

Lawrence M. Keenan Director
Department of Property Taxation

By *Sp. DeLuca* Deputy

STATE OF MINNESOTA } S.S.
COUNTY OF RAMSEY }

The foregoing instrument was acknowledged before me this 9th day of August, 1977 by Clayton G. Rein, its President, and by Virginia E. Rein, its Secretary, of C.G. Rein Company, a Minnesota corporation, on behalf of the corporation.

Ursula K. Foley
Notary Public, Ramsey County, Minnesota
My Commission Expires Sept. 15, 1982

Pursuant to Chapter 7, Minnesota Laws of 1976, this plat has been approved this 17th day of August, 1977.

By *Ronald F. Meyer*
Ronald F. Meyer, Acting County Surveyor

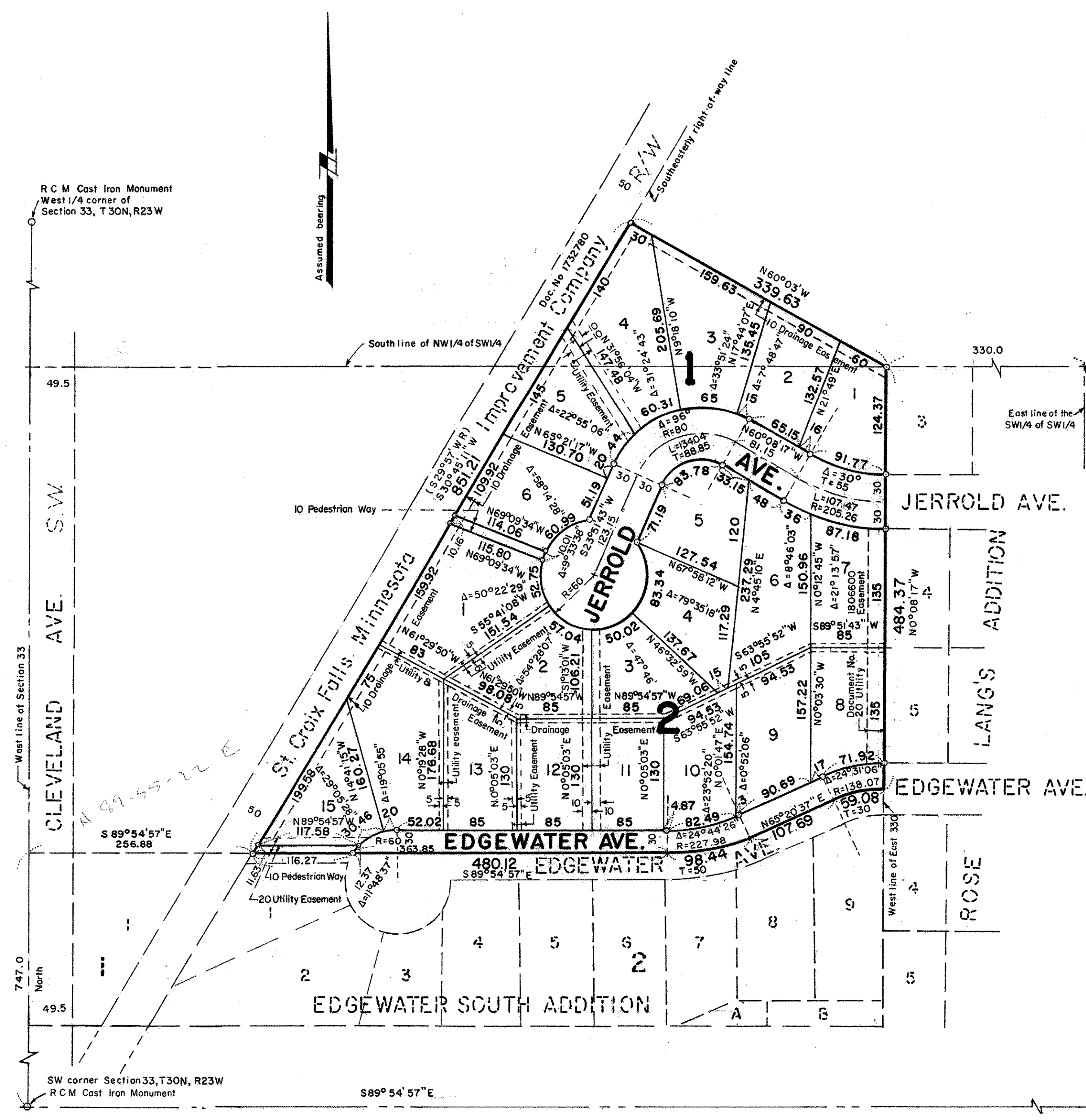
County Recorder, County of Ramsey, State of Minnesota
I hereby certify that this plat of HEIGHTS OF JOHANNA LAKE was filed in this office this 17th day of August, 1977 at 10:00 o'clock P.M. and was filed in Book _____ of Plots, Page _____ and that the copies were compared with the Official Plat and found to be true and correct copies thereof.

Robert T. Gibbons County Recorder
By _____ Deputy

Have caused the same to be surveyed, plotted and known as HEIGHTS OF JOHANNA LAKE and do hereby dedicate to the public for public use forever the Avenues, Pedestrian Ways, and Utility and drainage easements as shown on the plat.

Have hereunto set our hands and seal this 9th day of August, 1977.

Signed: C.G. Rein Company
Name *Clayton G. Rein* Title *Pres.*
Name *Virginia E. Rein* Title *Secretary*



o Denotes iron pipe monument
All distances are to hundredths of a foot; thus 85 denotes 85.00.
All distances along curves are arc lengths. West line of SW 1/4 of Section 33, T30N, R23W is assumed bearing North.