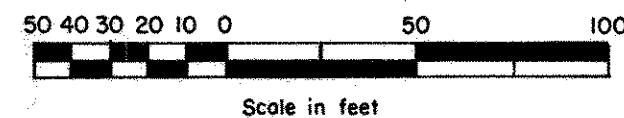


EDSTROM ADDITION

SCALE: 1 inch = 50 feet



CITY OF ROSEVILLE
RAMSEY COUNTY, MINNESOTA

CHARLES O. GEORGI COMPANY
CIVIL ENGINEERING & LAND SURVEYING

Know All Persons By These Presents that:
Russell K. Lewis and Ruth Lewis, husband and wife,

owners of the following described property situated in the City of Roseville, Ramsey County, Minnesota:

The South 249 feet of the North 259 feet of the West 124.46 feet of Lot 4, Thornton's Subdivision of the NE 1/4 of Section 13, T 29 N, R 23 W.

Have caused the same to be surveyed, platted and known as EDSTROM ADDITION.

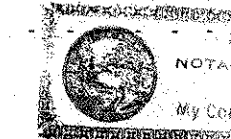
I, Charles O. Georgi, hereby certify that I have surveyed and platted the property described in the dedication of this plat as EDSTROM ADDITION; that this plat is a correct representation of said survey; that all distances are correctly shown on the plat; that all monuments have been correctly placed in the ground as shown; that the outside boundary lines are correctly designated on the plat, and there are no wet lands, easements or public highways other than as shown thereon.

Charles O. Georgi
Registered Land Surveyor No. 3960

STATE OF MINNESOTA } SS
COUNTY OF RAMSEY }

The surveyor's certificate was subscribed and sworn to before me, a Notary Public, this *21st* day of *October*, 1975.

C. M. Otmata
Notary Public, Ramsey County, Minnesota
My Commission Expires



Have hereunto set our hands and seals this *8th* day of *December*, 1975.

Signed:

Russell K. Lewis
Russell K. Lewis

Ruth Lewis
Ruth Lewis

Approved and accepted by the City council of Roseville, Minnesota, this *21st* day of *October*, 1975.

A. G. Lomborg Mayor
James F. Opasich Clerk

No delinquent taxes and transfer entered this *10th* day of *December*, 1975.

Law McKenna Director
Department of Property Taxation

By *sp. Osmond* Deputy

Register of Deeds, County of Ramsey, State of Minnesota

I hereby certify that this plat of EDSTROM ADDITION was filed in this office this ___ day of ___, 1975 at ___ o'clock ___ M. and was filed in Book ___ of Plats, Page ___ and that the copies were compared with the Official Plat and found to be true and correct copies thereof.

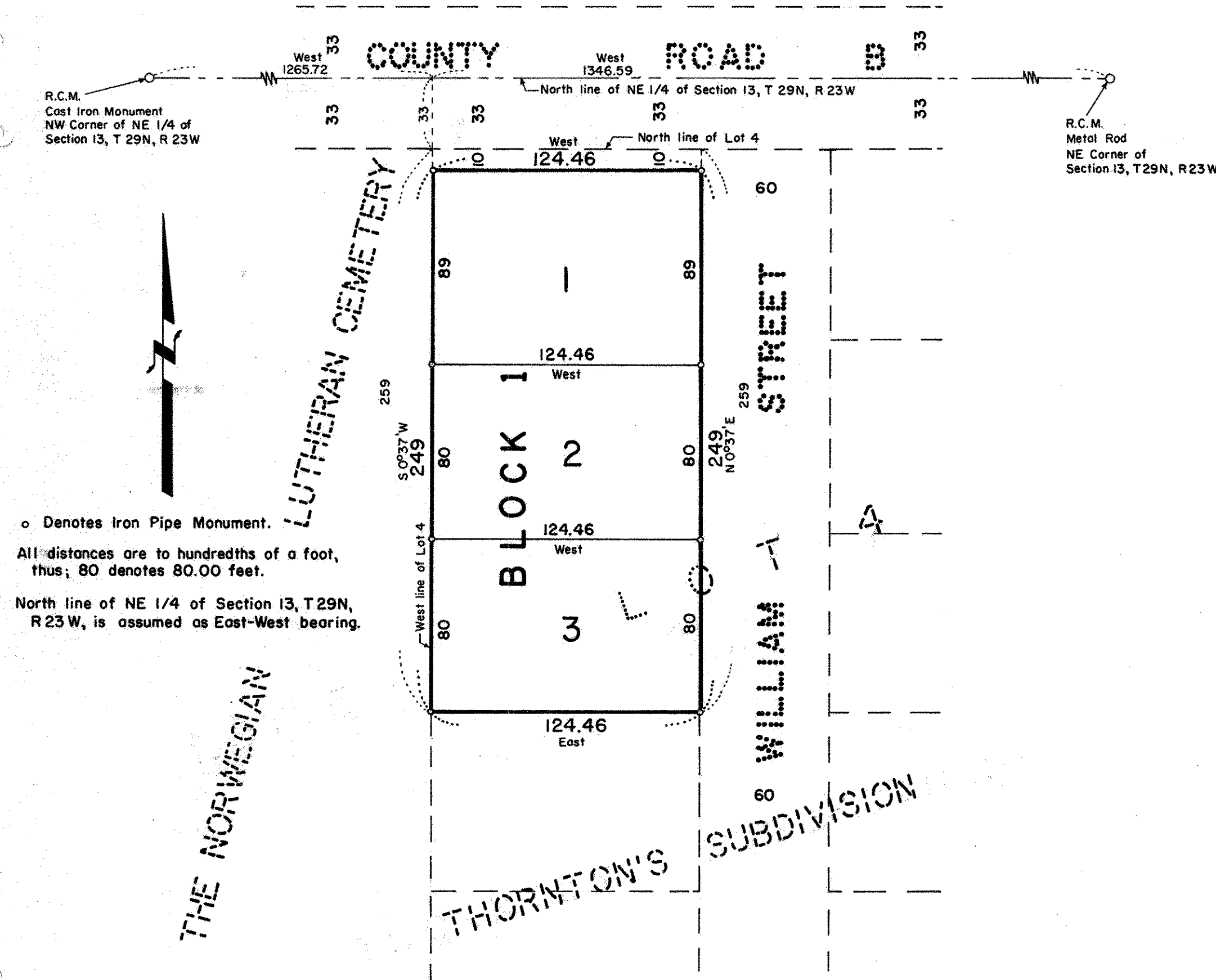
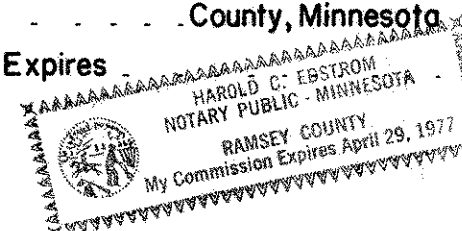
Robert T. Gibbons, Register of Deeds

By _____ Deputy

Accepted and approved this *12th* day of *DECEMBER*, A.D. 1975.

Walter A. Hestley
Ronald F. Meyer
Boyer W. Boyer
Arthur H. Wilbur } Plat Commission
City Engineer of St. Paul

Harold C. Edstrom
Notary Public, _____ County, Minnesota
My Commission Expires



o Denotes Iron Pipe Monument.
All distances are to hundredths of a foot, thus; 80 denotes 80.00 feet.
North line of NE 1/4 of Section 13, T 29 N, R 23 W, is assumed as East-West bearing.

STATE OF MINNESOTA } SS
COUNTY OF RAMSEY }

The foregoing instrument was acknowledged before me this *8th* day of *December*, 1975 by Russell K. Lewis and Ruth Lewis, husband and wife.