

# TOWNHOUSE VILLAGES NORTH 2ND ADDITION

3409

NOW ALL PERSONS BY THESE PRESENTS that Pentom, Inc., a Minnesota corporation, owner and The Pillsbury Company, a Delaware corporation, mortgagee, of the following described property situated in the City of Arden Hills, Ramsey County, Minnesota:

Tract A, Registered Land Survey No. 296;

have caused the same to be surveyed, platted and known as TOWNHOUSE VILLAGES NORTH 2ND ADDITION and do hereby dedicate to the public for public use forever the Drive together with a utility and drainage easement, only, over all of Lot 1, Block 11, as shown on this plat. In witness whereof said Pentom, Inc. has caused these presents to be signed by its proper officers and its corporate seal to be hereunto affixed this 9 day of OCTOBER, 1975 and in witness whereof said The Pillsbury Company has caused these presents to be signed by its proper officers and its corporate seal to be hereunto affixed this 9th day of OCTOBER, 1975.

Signed:

PENTOM, INC.

Bruce A. Thomson  
Bruce A. Thomson, President

James R. Hill  
James R. Hill, Vice-President

THE PILLSBURY COMPANY

William J. Powell  
William J. Powell,  
Senior Vice-President

Lynn E. Rhoads  
Lynn E. Rhoads,  
Assistant Secretary

STATE OF MINNESOTA COUNTY OF HENNEPIN The foregoing instrument was acknowledged before me this 9th day of OCTOBER, 1975 by Bruce A. Thomson, President and James R. Hill, Vice-President of Pentom, Inc. a Minnesota corporation, on behalf of the corporation.

Howard R. Kullo  
Notary Public, Hennepin County, Minnesota  
HOWARD R. KULLO  
Notary Public, Hennepin County, Minn.  
My Commission Expires Feb. 21, 1978

STATE OF MINNESOTA COUNTY OF HENNEPIN The foregoing instrument was acknowledged before me this 9th day of OCTOBER, 1975 by William J. Powell, Senior Vice-President and Lynn E. Rhoads, Assistant Secretary of The Pillsbury Company a Delaware corporation, on behalf of the corporation.

Howard R. Kullo  
Notary Public, Hennepin County, Minnesota  
HOWARD R. KULLO  
Notary Public, Hennepin County, Minn.  
My Commission Expires Feb. 21, 1978

I, E. A. Rathbun, hereby certify that I have surveyed and platted the property described in the dedication of this plat as TOWNHOUSE VILLAGES NORTH 2ND ADDITION; that this plat is a correct representation of said survey; that all distances are correctly shown on the plat; that all monuments have been correctly placed in the ground as shown; that the outside boundary lines are correctly designated on the plat; and that there are no wet lands, easements or public highways other than as shown thereon.

E. A. Rathbun  
E. A. Rathbun, Land Surveyor  
Minnesota Registration No. 3795

STATE OF MINNESOTA COUNTY OF ANOKA The foregoing instrument was acknowledged before me this 8th day of October, 1975 by E. A. Rathbun, Land Surveyor.

Marietta L. Zuehlke  
Notary Public, Anoka County, Minnesota  
MARIETTA L. ZUEHLKE  
Notary Public, Anoka County, Minn.  
My Commission Expires April 19, 1977

Approved and accepted by the City Council of Arden Hills, Ramsey County, Minnesota, this 17th day of October, 1975.

CITY COUNCIL OF ARDEN HILLS, MINNESOTA  
Andy Johnson Mayor  
Charlotte McTeech Clerk

No delinquent taxes and transfer entered this 22nd day of October, 1975.

Low McHenna Director By M. Alescher Deputy  
Department of Property Taxation

Accepted and approved this 3rd day of DECEMBER, 1975.

Walter A. Hurley Robert W. Ryan Ronald F. Meyer  
Plat Commission

Paul A. Wulsh  
City Engineer of St. Paul

REGISTER OF DEEDS

REGISTRAR OF TITLES, COUNTY OF RAMSEY, STATE OF MINNESOTA

I hereby certify that this plat of TOWNHOUSE VILLAGES NORTH 2ND ADDITION was filed in this office this \_\_\_\_\_ day of \_\_\_\_\_, 19\_\_\_\_ at \_\_\_\_\_ o'clock \_\_\_\_\_ M. and was filed in Book \_\_\_\_\_ of Plats, Page \_\_\_\_\_ and that the copies were compared with the Official Plat and found to be true and correct copies thereof.

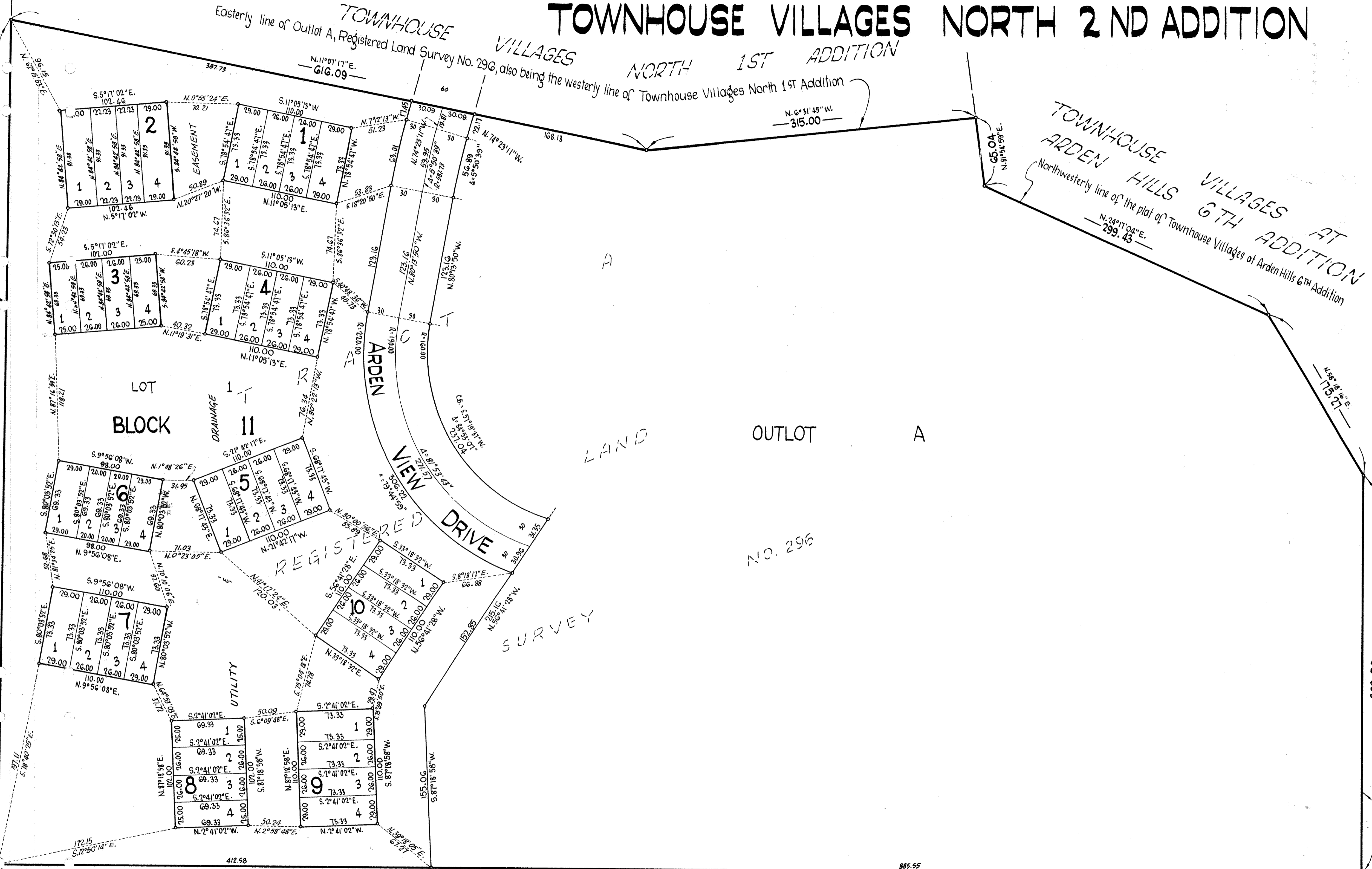
By \_\_\_\_\_ Deputy  
Robert T. Gibbons  
Register of Deeds - Registrar of Titles

# TOWNHOUSE VILLAGES NORTH 2ND ADDITION

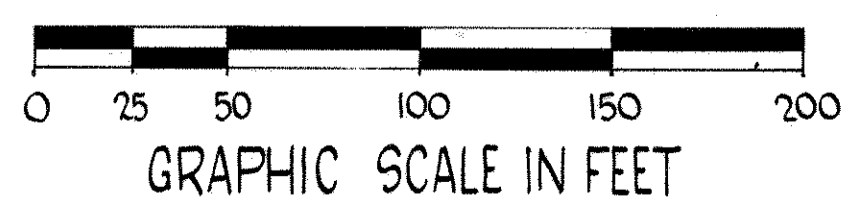
TOWNHOUSE VILLAGES NORTH 1ST ADDITION  
Easterly line of Outlot A, Registered Land Survey No. 296, also being the westerly line of Townhouse Villages North 1st Addition

TOWNHOUSE HILLS VILLAGES AT ARDEN HILLS 6TH ADDITION  
Northwesterly line of the plat of Townhouse Villages at Arden Hills 6th Addition

North line of Tract A, Registered Land Survey No. 296  
800.81



Scale: 1 inch = 50 feet  
AUGUST, 1975



West line of Tract A, Registered Land Survey No. 296.

Bearings shown are on an assumed datum  
• Denotes iron monument marked by Minnesota Registration No. 3795.

**URBAN ENGINEERING, INC.**  
—Engineers—  
—Surveyors—