

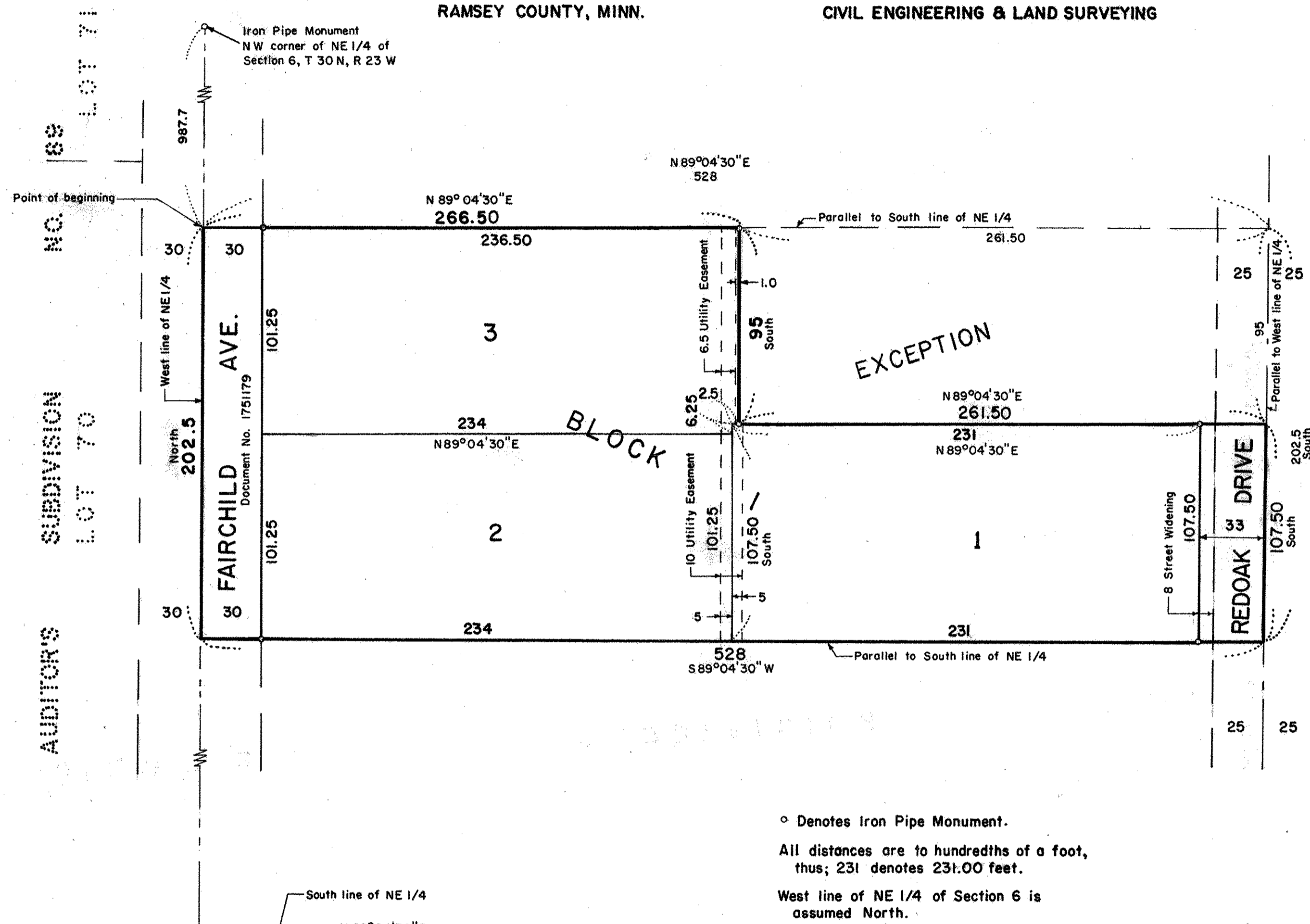
RASMUSSEN ADDITION

SCALE 1 inch = 50 feet



CITY OF MOUNDS VIEW
RAMSEY COUNTY, MINN.

CHARLES O. GEORGI COMPANY
CIVIL ENGINEERING & LAND SURVEYING



o Denotes Iron Pipe Monument.
 All distances are to hundredths of a foot,
 thus; 231 denotes 231.00 feet.
 West line of NE 1/4 of Section 6 is
 assumed North.

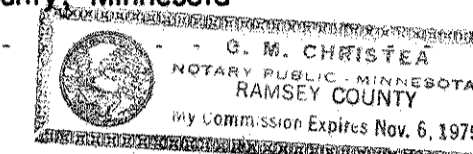
I, Charles O. Georgi, hereby certify that I have surveyed and platted the property described in the dedication of this plat as RASMUSSEN ADDITION; that this plat is a correct representation of said survey; that all distances are correctly shown on the plat; that all monuments have been correctly placed in the ground as shown; that the outside boundary lines are correctly designated on the plat; and there are no wet lands, easements or public highways other than as shown thereon.

Charles O. Georgi
 Registered Land Surveyor No. 3960

STATE OF MINNESOTA } SS
 COUNTY OF RAMSEY }

The Surveyor's certificate was subscribed and sworn to before me, a Notary Public, this 29th day of July, 1975.

O. M. Christea
 Notary Public, Ramsey County, Minnesota
 My Commission Expires



Know All Persons By These Presents that
 Harley Rasmussen and Marie E. Rasmussen, husband and wife,
 owners of the following described property situated in the city of Mounds View, Ramsey County, Minnesota:

That part of the NE 1/4 of Section 6, T 30 N, R 23 W, described as follows:
 beginning at a point on the West line of said NE 1/4 a distance of 987.7 feet South
 of the NW corner of said NE 1/4, thence East parallel with the South line of said NE 1/4 a distance
 of 528 feet, thence South parallel with the West line of said NE 1/4 a distance
 of 202.5 feet, thence West parallel with the South line of said NE 1/4 a distance of 528
 feet, thence North to the point of beginning a distance of 202.5 feet; reserving therefrom
 the East 25 feet for road purposes.
 Also except the North 95 feet of the East 261.5 feet thereof.

Have caused the same to be surveyed, platted and known as RASMUSSEN ADDITION and do hereby dedicate to the public for public use forever the avenue, drive, and utility easements as shown on the plat.

Have hereunto set our hands and seals this 30th day of July, 1975.
 Signed:

Harley Rasmussen *Marie E. Rasmussen*
 Harley Rasmussen Marie E. Rasmussen

STATE OF MINNESOTA } SS
 COUNTY OF RAMSEY }

The foregoing instrument was acknowledged before me this 30th day of July, 1975, by Harley Rasmussen and Marie E. Rasmussen, husband and wife.

Dorothy Sandgren
 Notary Public, Ramsey County, Minnesota
 My Commission Expires

DOROTHY SANDGREN
 Notary Public, Ramsey County, Minn.
 My Commission Expires Nov. 15, 1977

Accepted and approved this ___ day of ___, A.D., 1975.

Ronald F. Meyer
Patricia A. Shetty
Richard L. Whitham
 Plat Commission
 City Engineer of St. Paul

Register of Deeds, County of Ramsey, State of Minnesota,
 I hereby certify that this plat of RASMUSSEN ADDITION
 was filed in this office this ___ day of ___
 1975, at ___ o'clock ___ M. and was filed in book ___
 of plats, page ___ and that the copies were compared
 with the the official plat and found to be true and cor-
 rect copies thereof.

Robert T. Gibbons, Register of Deeds
 By _____
 Deputy

No delinquent taxes and transfer entered this 6th day of August, 1975.

Law McKenna Director
 Department of Property Taxation
 By *M. Helcher* Deputy

Approved and accepted by the City Council of Mounds View, Minnesota, this 30th day of July, 1975.

Gerald H. Johnson
 Mayor
Mark Achen
 Clerk