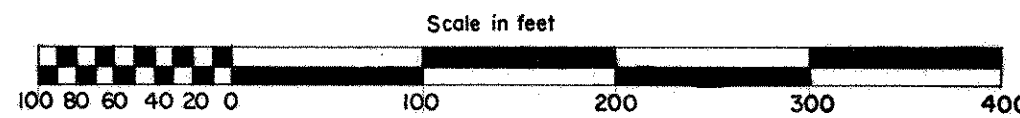


# TSCHIDA OWASSO HILLS PLAT NO.3



SCALE 1 inch = 100 feet

CITY OF ROSEVILLE  
RAMSEY COUNTY, MINNESOTA

CHARLES O. GEORGI COMPANY  
CIVIL ENGINEERING & LAND SURVEYING

Know all persons by these present that:

Virginia E. Tschida, widow, and  
Ed Cave & Sons, Inc., a Minnesota corporation, purchaser by contract for deed,

owners of the following described property situated in the City of Roseville, Ramsey County, Minnesota:

All that part of the SW 1/4 of the NE 1/4 of Section 1, T 29N, R 23W, Ramsey County, lying Westerly of Kroiss Northwood Addition Plat 2, lying Northerly of Tschida Owasso Hills Plat 2, and lying Northerly of Roseville Public Park described by deed 1829 page 588. Subject to Western Ave., Owasso Blvd. South, and easements of record.,

have caused the same to be surveyed, platted and known as TSCHIDA OWASSO HILLS PLAT NO. 3, and do hereby dedicate to the public for public use forever the avenues, street, boulevard, circle, and utility and drainage easements as shown on the plat.

Have hereunto set my hand this 22 day of October, 1974.

Signed:

*Virginia E. Tschida*  
Virginia E. Tschida

Have hereunto set our hands and seal this 23 day of October, 1974.

Ed Cave & Sons, Inc., a Minnesota corporation

Signed:

*Samuel Cave*  
Name

*Pres*  
Title

*Diane C. Cave*  
Name

*U.P.*  
Title

I, Charles O. Georgi, hereby certify that I have surveyed and platted the property described in the dedication of this plat as TSCHIDA OWASSO HILLS PLAT NO. 3, that this plat is a correct representation of said survey; that all distances are correctly shown on the plat; that all monuments have been correctly placed in the ground as shown; that the outside boundary lines are correctly designated on the plat; and that there are no wet lands, easements or public highways other than as shown thereon.

*Charles O. Georgi*  
Registered Land Surveyor  
Minnesota Registration No. 3960

STATE OF MINNESOTA } S.S.  
COUNTY OF RAMSEY }

The Surveyor's certificate was subscribed and sworn to before me, a Notary Public, this 30 day of September, 1974

*C. M. Christea*  
Notary Public, Ramsey County, Minnesota  
My Commission Expires November 6, 1979

STATE OF MINNESOTA } S.S.  
COUNTY OF RAMSEY }

The foregoing instrument was acknowledged before me this 22 day of October, 1974 by Virginia E. Tschida, widow.

*Cheryl J. Neary*  
Notary Public, Ramsey County, Minnesota  
My Commission Expires September 11, 1979

STATE OF MINNESOTA } S.S.  
COUNTY OF RAMSEY }

The foregoing instrument was acknowledged before me this 23 day of October, 1974 by Samuel Cave, President and by Diane C. Cave, Vice President of Ed Cave & Sons, Inc., a Minnesota corporation, on behalf of said corporation.

*C. M. Christea*  
Notary Public, Ramsey County, Minnesota  
My Commission Expires September 11, 1979

Approved and accepted by the City Council of Roseville, Minnesota, this 30 day of September, 1974.

*A. Gale Lomborg* Mayor  
*James J. Anderson* Clerk

No delinquent taxes and transfer entered this 23 day of OCTOBER, 1974.

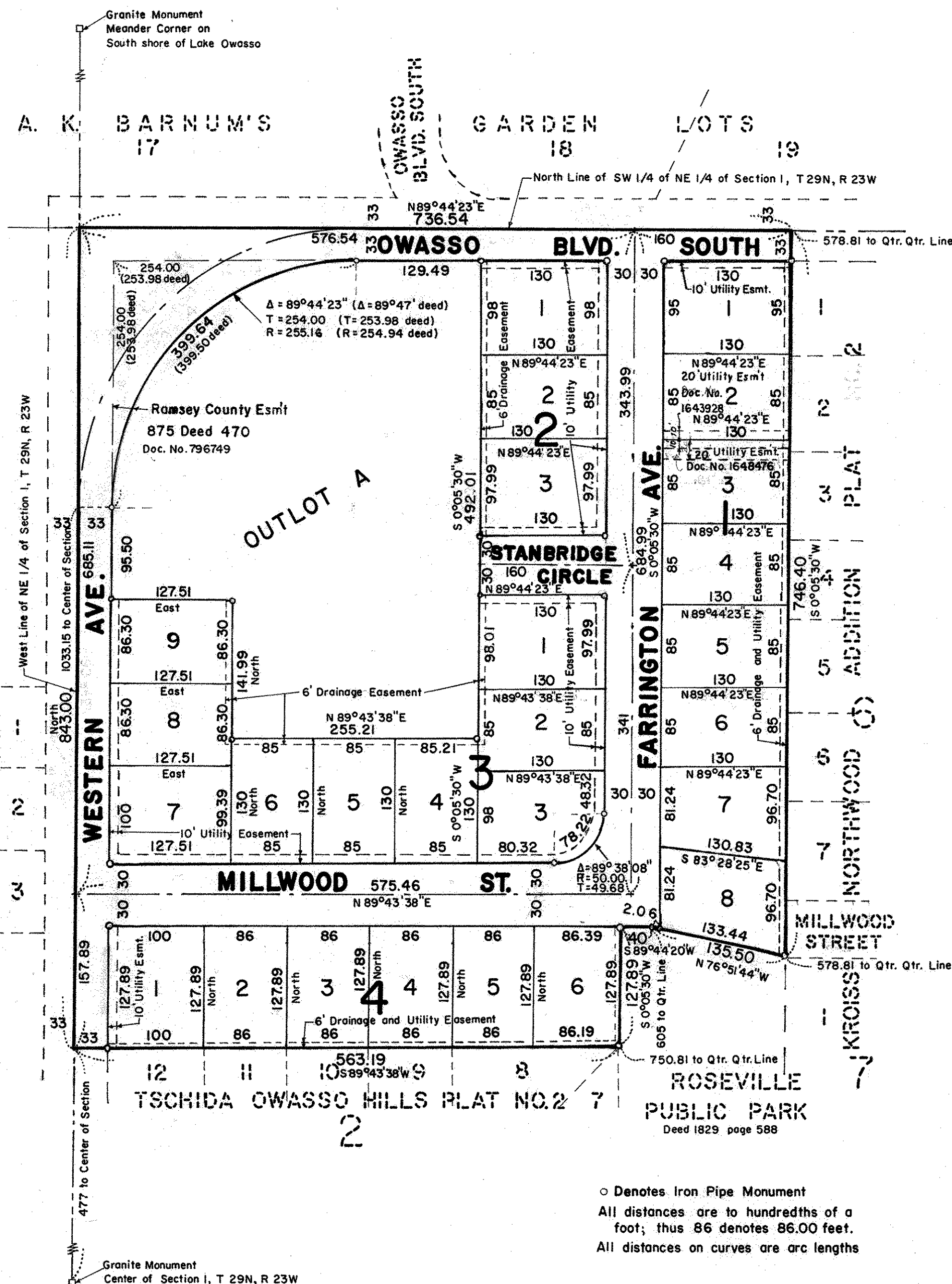
*Joe McKenna* Director  
Department of Property Taxation

By *Richard J. Wendt* Deputy

Accepted and approved this 1st day of NOVEMBER, 1974.

*Walter A. Hestby*  
*Ronald F. Meyer* } Plat Commission

*Robert M. Ullrich* City Engineer of St. Paul



o Denotes Iron Pipe Monument  
All distances are to hundredths of a foot; thus 86 denotes 86.00 feet.  
All distances on curves are arc lengths