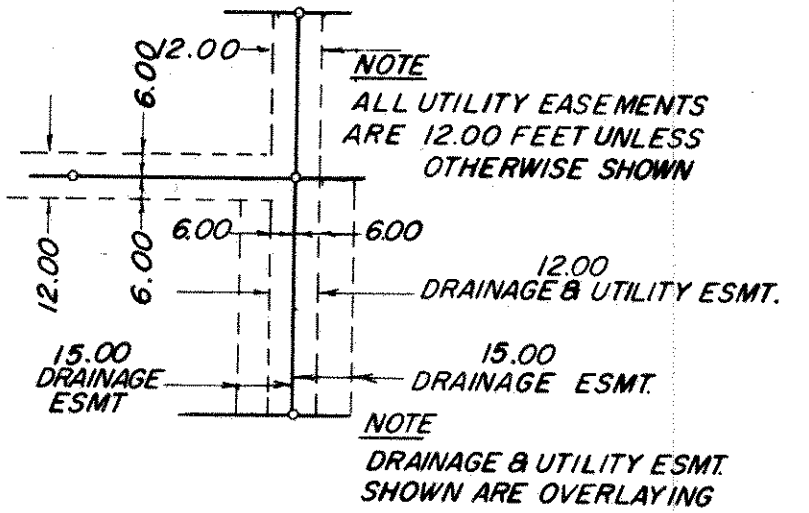
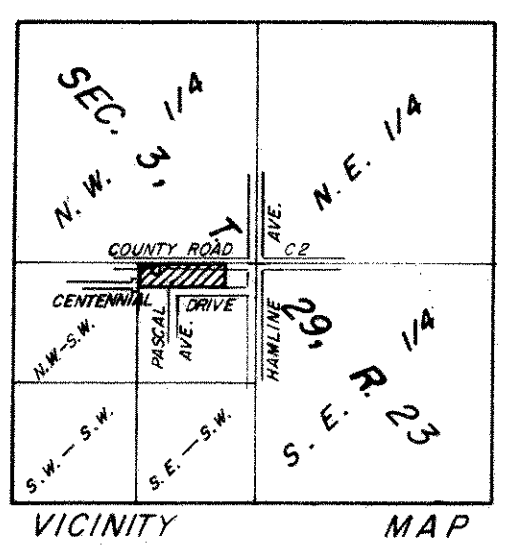
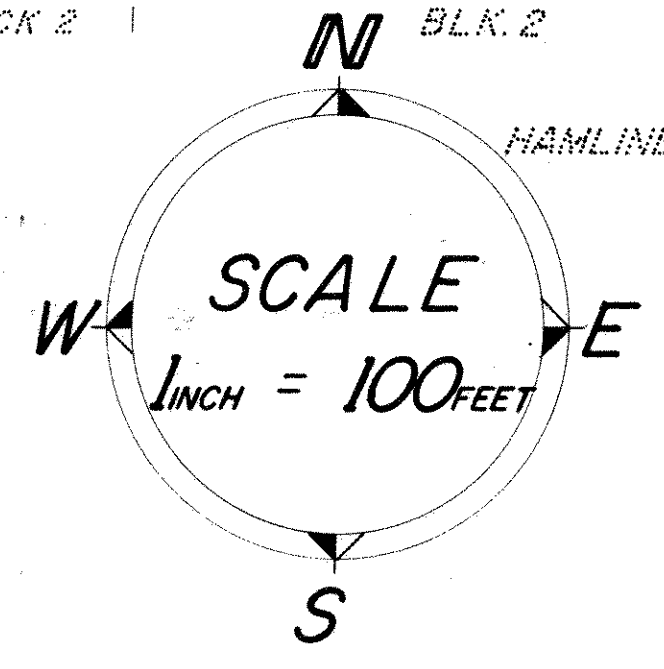
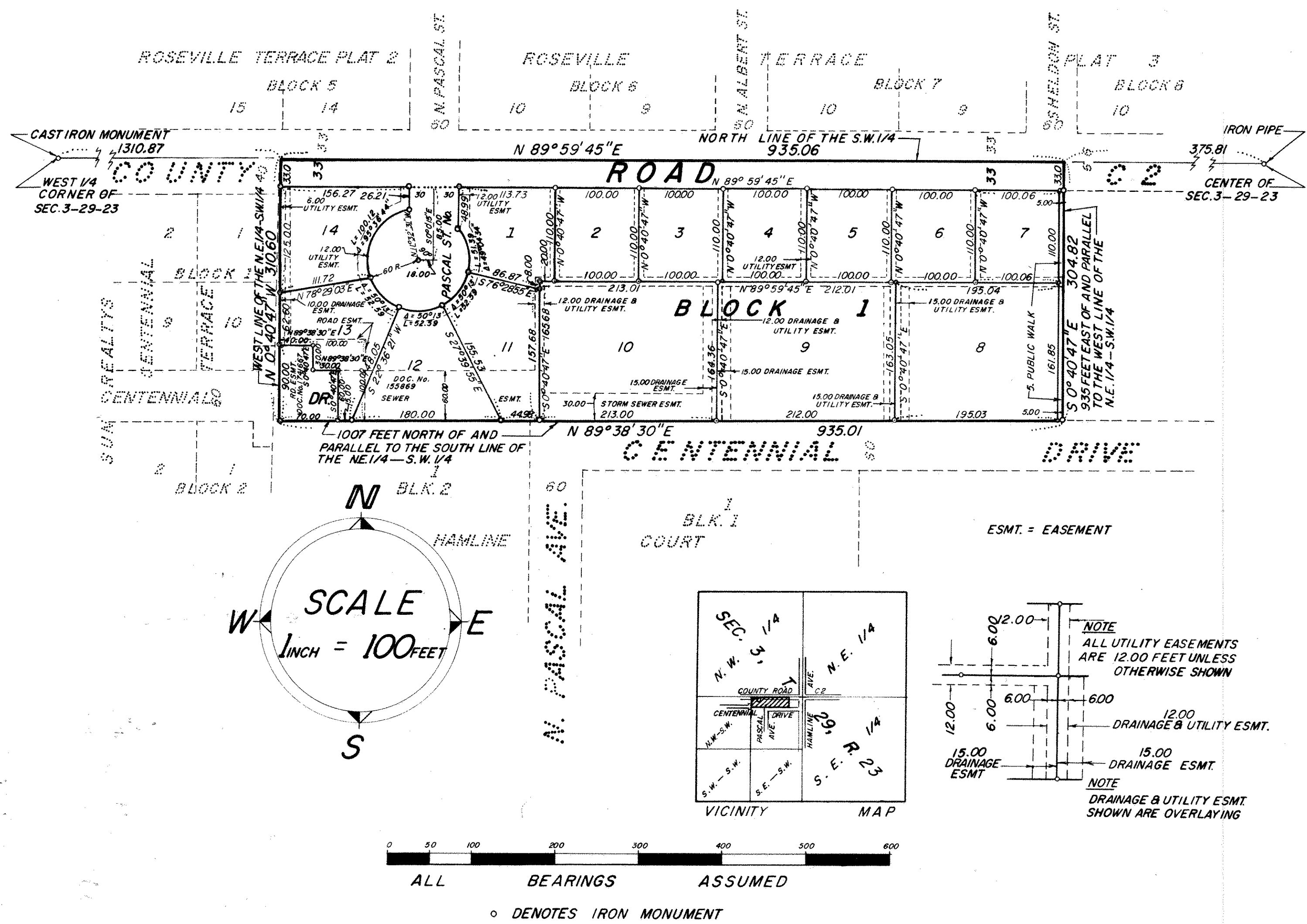


MICHELS CENTENNIAL ADDITION



0 50 100 200 300 400 500 600

ALL BEARINGS ASSUMED

o DENOTES IRON MONUMENT

Approved and accepted by the Village Council of ROSEVILLE, Minnesota, this 10 day of December 1973.
A. Gale Linberger MAYOR
Burl M. Raymond CLERK

Accepted and approved this 19th day of December A.D., 1973.
Ronald F. Meyer
Plat Commission
M...
Richard J. Ullrich City Engineer of St. Paul

No delinquent taxes and transfer entered this 18 day of Dec, 1973.
By Lou Mc Kenna By Huahlen Deputy

Abstract # 1573255

RECORDED DEC. 19, 1973