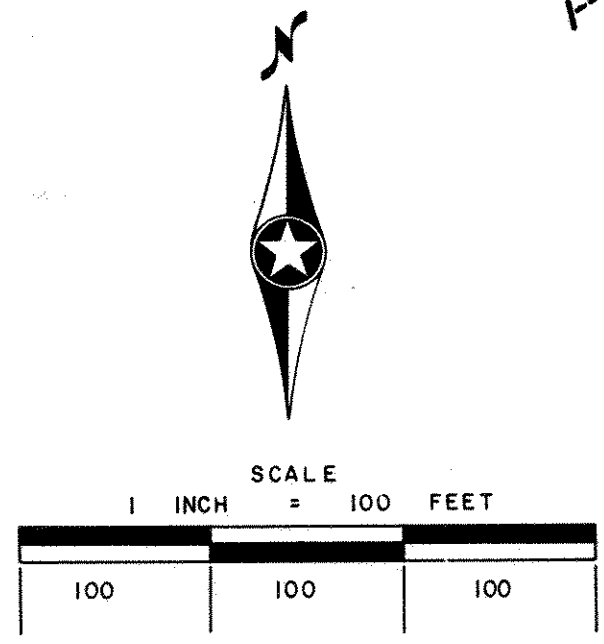
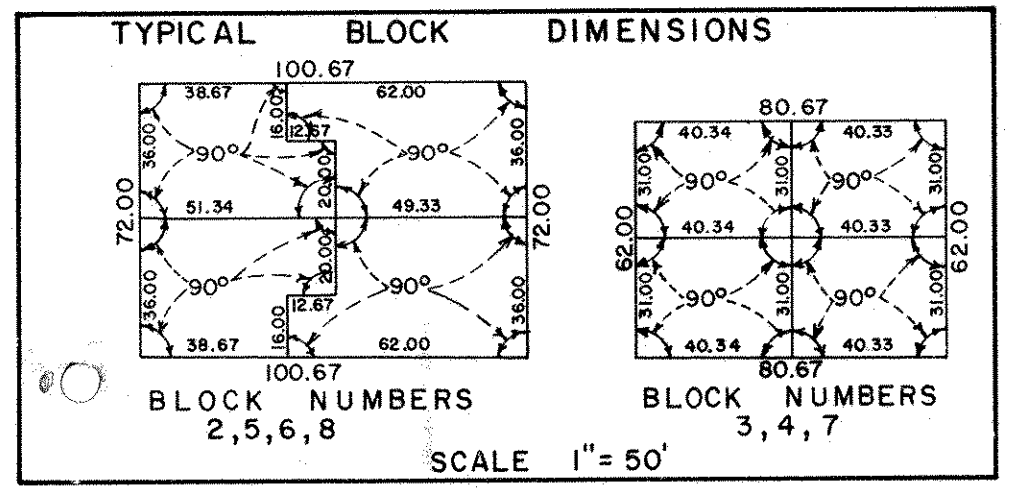
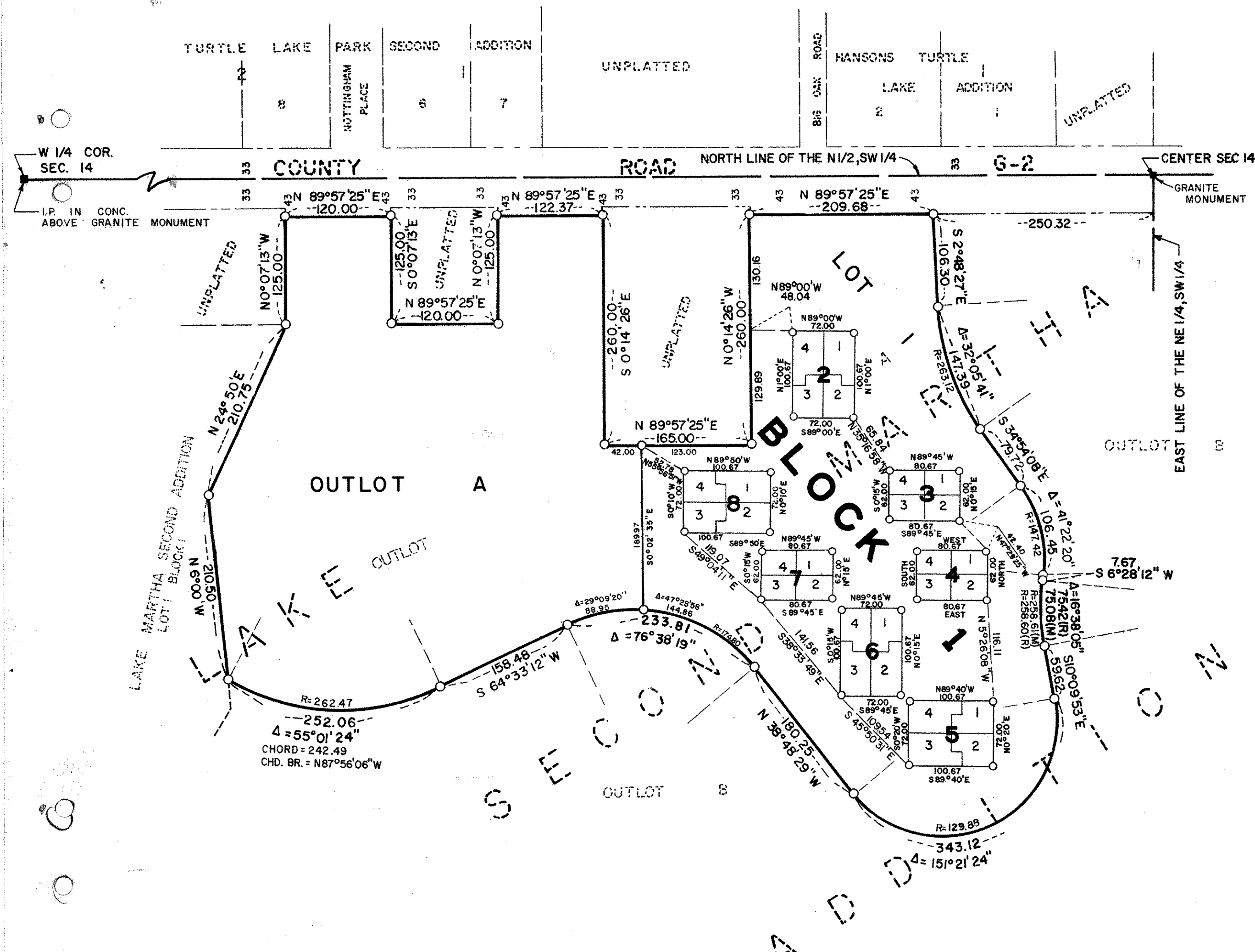
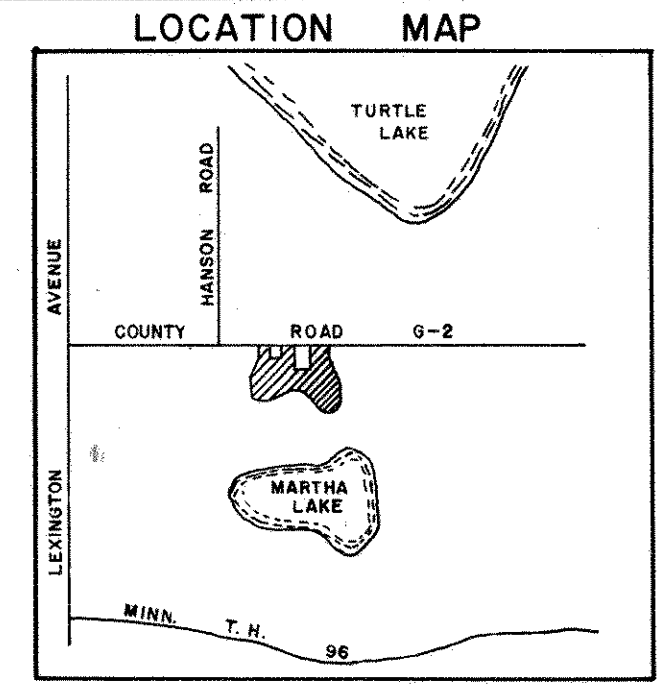


LAKE MARTHA THIRD ADDITION

VILLAGE OF SHOREVIEW, COUNTY OF RAMSEY, STATE OF MINNESOTA



○ DENOTES IRON MONUMENT
BASIS FOR BEARING IS ASSUMED
(R)=AS PER LAKE MARTHA SECOND ADDITION
(M)=CORRECT DIST. AS PER LAKE MARTHA THIRD ADDITION

KNOW ALL MEN BY THESE PRESENTS: that Shelter Homes Corporation, a Minnesota corporation, owner and proprietor, and Shelter Mortgage Corporation, a Minnesota corporation, mortgagee, of the following described property, situated in the County of Ramsey and State of Minnesota to-wit:

Outlot A, Lake Martha Second Addition

have caused the same to be surveyed and platted as LAKE MARTHA THIRD ADDITION. In witness whereof Shelter Homes Corporation has caused these presents to be signed by its proper officers and its corporate seal to be hereunto affixed this 17th day of September, 1973, A.D., and Shelter Mortgage Corporation has caused these presents to be signed by its proper officers and its corporate seal to be hereunto affixed this 17th day of September, 1973, A.D.

IN PRESENCE OF:
Thomas E. Laballe James M. Madson Curtis M. Lund - President
Julie A. Burke Jean A. Fenell John Bejina
Thomas E. Laballe James J. Montague James K. Johnson
John Bejina Juan V. Bluit John M. Hamm

STATE OF MINNESOTA } On this 17th day of September, 1973, A.D., before me a Notary Public, within and for said County and State, personally appeared Curtis M. Lund and John Bejina, to me personally known, who being by me each duly sworn, did say that they are respectively the President and Secretary of Shelter Homes Corporation, the corporation named in the foregoing instrument that the seal affixed to said instrument is the seal of said corporation; and that said instrument was signed and sealed in behalf of said corporation by authority of its Board of Directors and said Curtis M. Lund and John Bejina acknowledged said instrument to be the free act and deed of said corporation.
Julie A. Burke Notary Public
Hennepin County, Minnesota
My Commission Expires: June 26, 1979

STATE OF MINNESOTA } On this 17th day of September, 1973, A.D., before me a Notary Public, within and for said County and State, personally appeared James K. Johnson and Peter M. Kumm to me personally known, who being by me each duly sworn, did say that they are respectively the President and Secretary of Shelter Mortgage Corporation, the corporation named in the foregoing instrument that the seal affixed to said instrument is the seal of said corporation; and that said instrument was signed and sealed in behalf of said corporation by authority of its Board of Directors and said James K. Johnson and Peter M. Kumm acknowledged said instrument to be the free act and deed of said corporation.
Cheryl E. Nelson Notary Public
Hennepin County, Minnesota
My Commission Expires: July 23, 1977

I, James E. Boerhave, hereby certify that I have surveyed the property described on this plat as LAKE MARTHA THIRD ADDITION; that this plat is a correct representation of said survey; that all distances are correctly shown; that the monuments are correctly placed in the ground as shown; that the outside boundary lines are correctly designated on the plat; and that there are no wet lands, public highways, or easements on or across said plat other than as shown thereon.
James E. Boerhave
Surveyor Minnesota Registration No. 7095

STATE OF MINNESOTA } Surveyor's certificate subscribed and sworn to before me, a Notary Public, this 20th day of August, 1973, A.D.
COUNTY OF HENNEPIN ss. Robert M. O. Boe Notary Public HENNEPIN County, Minnesota
Robert M. O. Boe
NOTARY PUBLIC, MINNESOTA
HENNEPIN COUNTY
My Commission Expires: MAY 18, 1980

Accepted and approved by the Village of Shoreview this 1st day of October, 1973, A.D.
Wm. B. Farrell Mayor
Attest: Richard B. Hogan Village Clerk

We hereby certify that this plat was accepted and approved by the Ramsey County Plat Commission this 2nd day of October, 1973, A.D.

Plat Commission Ronald F. Myer Richard A. Wheeler
Walter A. Shortley
Ray W. [Signature]
City Engineer of St. Paul

