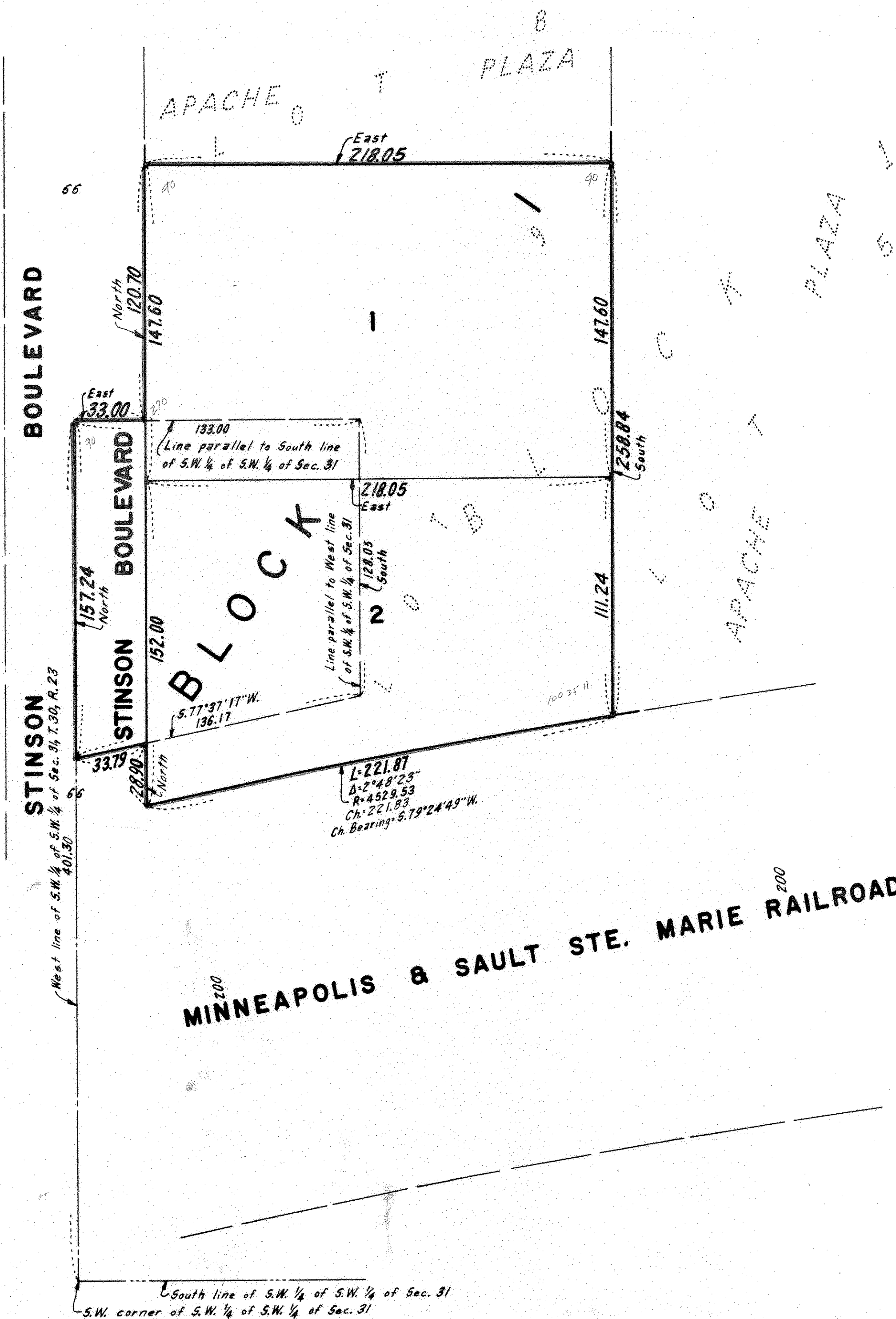


PILLSBURY ADDITION

BEARINGS SHOWN ARE ASSUMED
° DENOTES IRON MONUMENT

OCTOBER, 1972
SCALE: 1 INCH EQUALS 40 FEET

EGAN, FIELD & NOWAK
SURVEYORS



Know all men by these presents that The Pillsbury Company, a Delaware corporation, owner and proprietor of the following described property situated in the State of Minnesota and County of Ramsey to wit: Lot 9, Block 1, APACHE PLAZA. Also that part of the Southwest 1/4 of the Southwest 1/4 of Section 31, Township 30 North, Range 23 West, Ramsey County, Minnesota described as follows: Commencing at a point on the West line of Section 31 lying 401.3 feet North of the Southwest corner of the Southwest 1/4 of the Southwest 1/4 of Section 31; thence East parallel to the South line of said Section 31, a distance of 133 feet; thence South parallel to the West line of said Section 31, a distance of 128.05 feet; thence Southwesterly to a point on the West line of Section 31, a distance of 157.24 feet South of the point of beginning; thence North along the West line of Section 31 to the point of beginning, has caused the same to be surveyed and platted as PILLSBURY ADDITION and do hereby donate and dedicate to the public for public use forever the boulevard as shown on this plat. In witness whereof said The Pillsbury Company has caused these presents to be signed by its proper officers and its corporate seal to be hereunto affixed this 16th day of November A. D. 1972.

In presence of:

Raymond E. Montgomery to George W. Hosfield
T. T. Judge and Lynn E. Rhoads

THE PILLSBURY COMPANY

by *George W. Hosfield* President
George W. Hosfield
by *Lynn E. Rhoads* assistant secretary
Lynn E. Rhoads

STATE OF ~~Minnesota~~ Minnesota
COUNTY OF ~~Hennepin~~ Hennepin S. S. On this 16th day of November A. D. 1972, before me, a Notary Public, personally appeared George W. Hosfield and Lynn E. Rhoads to me personally known who by me each duly sworn did say that they are respectively vice president and assistant secretary of The Pillsbury Company, the corporation named in the foregoing instrument, that the corporate seal affixed to said instrument is the corporate seal of said corporation, and that said instrument was signed and sealed in behalf of said corporation by authority of its Board of Directors and said George W. Hosfield and Lynn E. Rhoads acknowledged said instrument to be the free act and deed of said corporation.

Opal H. Johnson
Opal H. Johnson
Notary Public, Hennepin County, Minnesota
My commission expires December 3, 1975

I hereby certify that I have surveyed and platted the property described on this plat as PILLSBURY ADDITION; that this plat is a correct representation of said survey; that all distances are correctly shown on the plat in feet and decimals of a foot; that all monuments have been correctly placed in the ground as shown; that the outside boundary lines are correctly designated on the plat and that there are no wet lands, public highways or easements on or across said plat other than as shown thereon.

William D. Nickola
Surveyor - Minnesota Registration No. 9053

STATE OF MINNESOTA
COUNTY OF HENNEPIN S. S. The surveyor's certificate was subscribed and sworn to before me a Notary Public, this 6th day of November A. D. 1972.

Chris Kuntz
CHRIS KUNTZ, Notary Public, Hennepin County, Minnesota
My commission expires March 4, 1975.

This plat is approved by the Village Council of the Village of St. Anthony, Minnesota, on this 13th day of March A. D. 1973.

VILLAGE COUNCIL OF THE VILLAGE OF ST. ANTHONY, MINNESOTA

signed *Alvane R. Mielke* mayor

attest *Carol B. Johnson* clerk

Accepted and approved this 17th day of May A. D. 1973.

Walter A. Whitley
Shirley A. Baker
Raymond E. Montgomery } Plat Commission

Richard W. Schum City Engineer of St. Paul

NO DELINQUENT TAXES AND TRANSFER ENTERED

MAY 16 1973

ED. MCKENNA, ANNOT. RAMSEY COUNTY, MINN.

P. Lacey

Abstract # 1855505

Recorded May 18, 1973