

MAPLECREST

VILLAGE OF MAPLEWOOD
RAMSEY COUNTY, MINNESOTA

CHARLES O. GEORGI COMPANY
CIVIL ENGINEERING & LAND SURVEYING

SCALE 1"=100"

I hereby certify to having surveyed the property described on this plat as Maplecrest and have placed iron monuments on the corners shown and the same is correct. There is no low wet ground nor any traveled road or easement on or across same except as shown.

Charles O. Georgi
Registered Land Surveyor
Minnesota Certificate No. 3960

State of Minnesota
County of Ramsey } s.s.

On this 15th day of December A.D. 1965 before me the undersigned personally appeared Charles O. Georgi to me known to be the person described in and who executed the foregoing instrument and acknowledged that he executed the same as his free act and deed.

R. E. Morgan
Notary Public, Ramsey County, Minn.
My Commission Expires April 16, 1970

NOT PLATTED

This is to certify that we Ban-Con, Inc., a Minnesota Corporation, Fee owner & Mortgagor Bankers Mortgage Corporation, a Minnesota Corporation, Mortgagee are Owners of: Lots 1 thru 11 and Lots 14 thru 25, Block 5; Lots 2 thru 12, Block 6; Lots 3 thru 16 and Lot 2 except the East 10 feet thereof, Block 7; Lots 3 thru 12 and Lot 2 except the Easterly 5 feet thereof, Block 8; Lots 5 thru 16, Block 9; and that part of vacated Lee St. lying West of the West line of Lot 1, Block 6 extended North, to the North line of Skillman Ave.; and vacated Belmont Lane from the West line of Lot 2, Block 8 extended North, to Lee St.; and that part of vacated Eldridge Ave. from the West line of Lot 13, in said Block 6 extended Southerly to Southeasterly line of Lot 13, in said Block 5 extended Southwesterly, Little's Third Addition. Have caused the same to be surveyed and plotted and hereafter known as Maplecrest as shown by this plat, and hereby dedicate to the public and for public use forever all streets, avenues, lanes, and easements as shown hereon.

Witness our hands this 15th day of December, A.D. 1965.

In the presence of:
R. E. Morgan Seal
Theodore Glasrud
Jacqueline Warren Bankers Mortgage Corporation
Jacqueline Warren Mortgagee
R. E. Morgan
Ronald E. Flo
Ronald J. Schoenbeck
Ronald E. Flo

State of Minnesota
County of Ramsey } s.s.

On this 15th day of December A.D. 1965 before me appeared Theodore Glasrud and Ronald Flo who each being duly sworn did say that they are respectively the President and Secretary of the Ban-Con, Inc., a Minnesota Corporation, the corporation named in the foregoing instrument and that said instrument was signed in behalf of said corporation by the authority of its Board of Directors and said Theodore Glasrud and Ronald Flo acknowledge said instrument to be the free act and deed of said corporation.

R. E. Morgan
Notary Public, Ramsey County, Minn.
My Commission Expires April 16, 1970

State of Minnesota
County of Ramsey } s.s.

On this 15th day of December A.D. 1965 before me appeared Donald Schoenbeck and Robert Warren who each being duly sworn did say that they are respectively the Vice President and Treasurer of Bankers Mortgage Corporation, a Minnesota Corporation, the corporation named in the foregoing instrument and that said instrument was signed in behalf of said corporation by the authority of its Board of Directors and said Donald Schoenbeck and Robert Warren acknowledge said instrument to be the free act and deed of said corporation.

R. E. Morgan
Notary Public, Ramsey County, Minn.
My Commission Expires April 16, 1970

Accepted and approved by the Village Council of the Village of Maplewood on this 27th day of December 1965

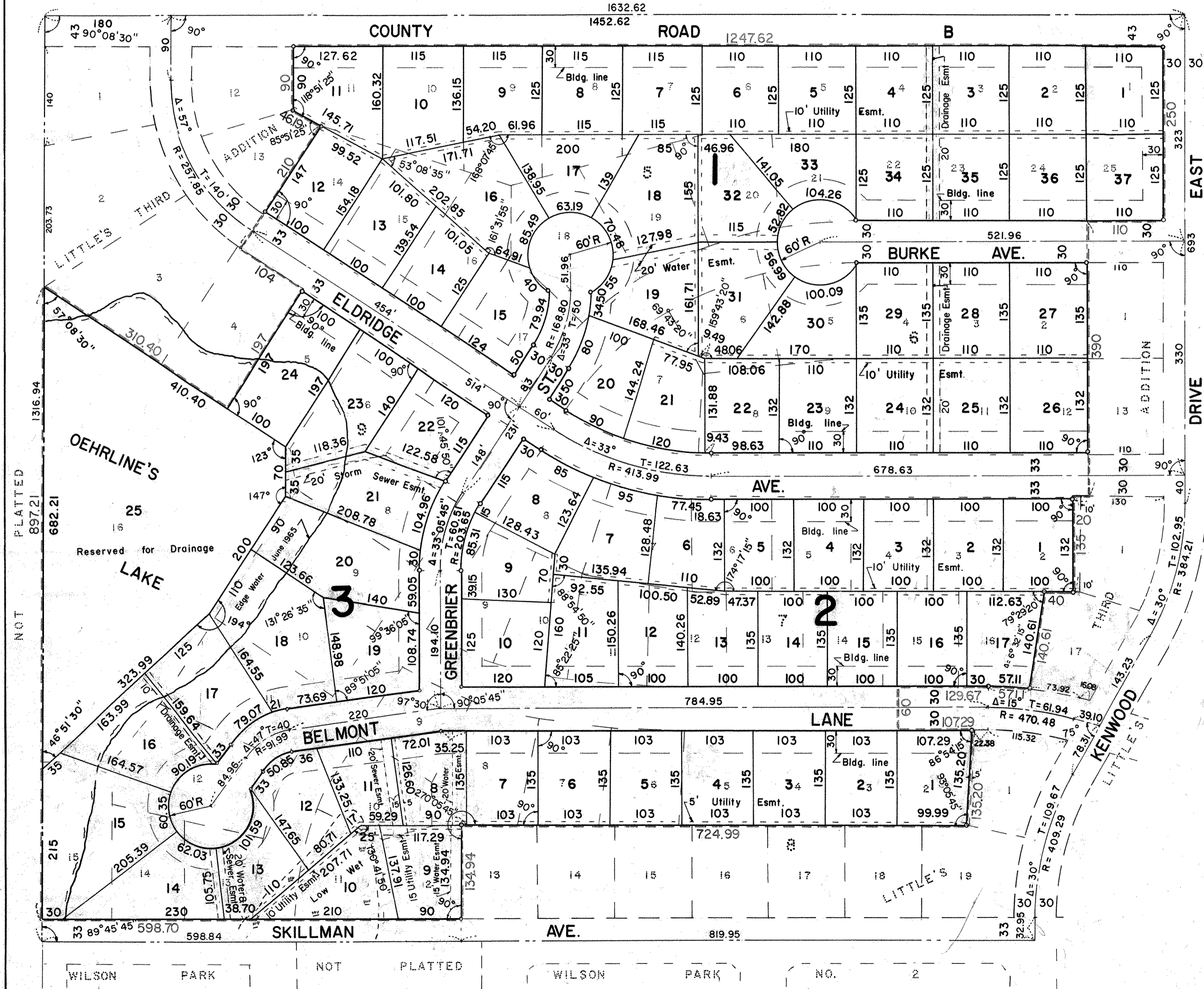
Byron H. Holm Mayor
James M. Napier Attest Clerk

Accepted and approved this 27th day of January A.D. 1965

Walter J. Bremner
Logg B. B. B. B. Plat Commission

Walter J. Bremner Commissioner of Public Works

Recorded February 24, 1966.



Denotes Iron Monuments
All Distances on Curves are Arc Lengths.
Center line of Easements are the lot lines.