

# BEL-AIR HILLS

CITY OF WHITE BEAR LAKE

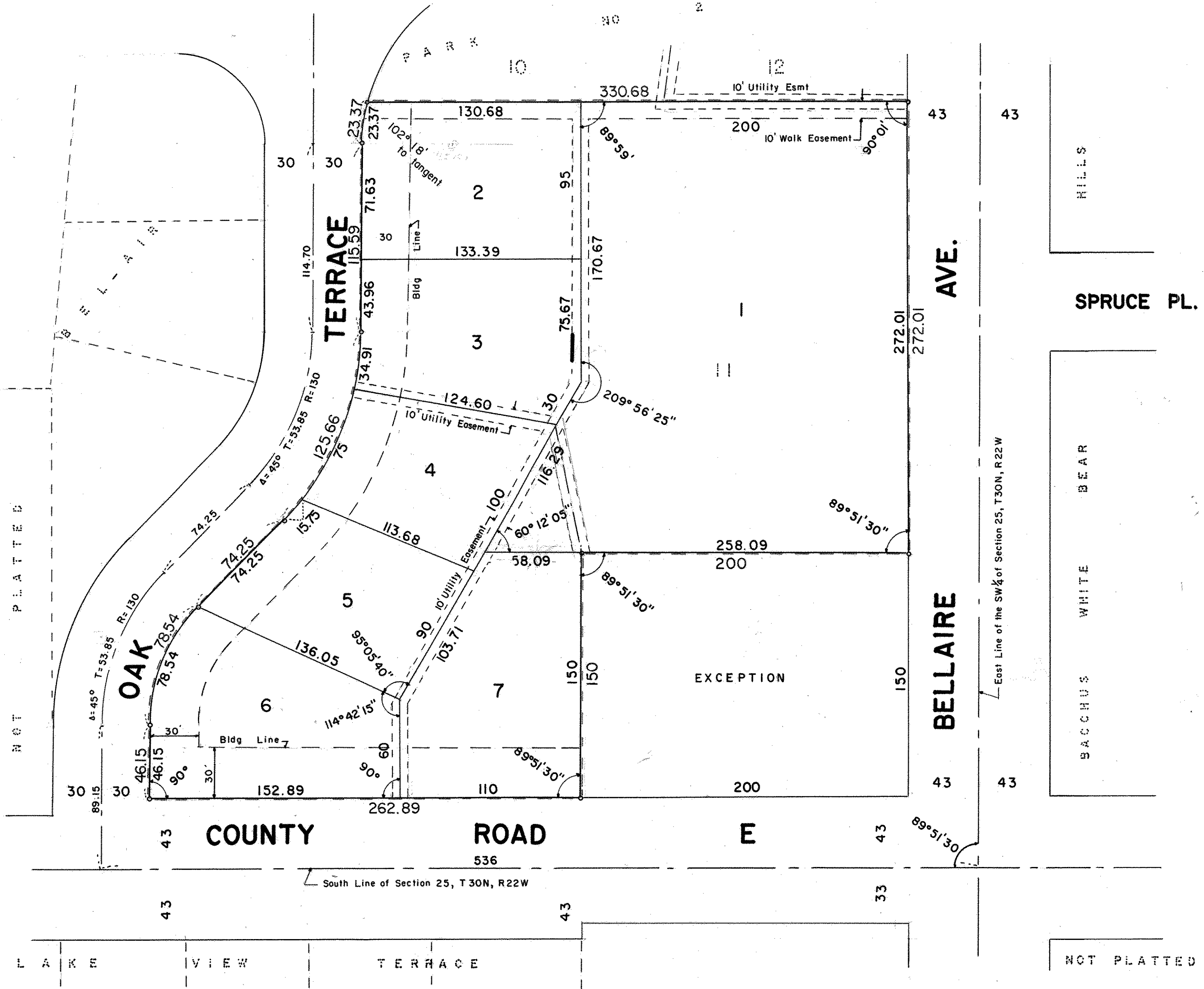
RAMSEY COUNTY, MINNESOTA

CHARLES O. GEORGI COMPANY  
CIVIL ENGINEERING & LAND SURVEYING

SCALE 1" = 50'

I hereby certify to having surveyed the property described on this plat as Bel-Air Hills and have placed iron monuments on the corners shown and the same is correct. There is no low wet ground nor any traveled road or easement on or across same except as shown.

*Charles O. Georgi*  
Registered Land Surveyor  
Minnesota Certificate No. 3960



All distances on Curves are Arc Lengths  
o Denotes Iron Monument

State of Minnesota,  
County of Ramsey, s.s.  
On this 21<sup>st</sup> day of June, A.D. 1965 before me the under-  
signed personally appeared Charles O. Georgi to me known to be the  
person described in and who executed the foregoing instrument and  
acknowledge that he executed the same as his free act and deed.

*Eugene H. Krause*  
Notary Public, Ramsey County, Minn.  
My Commission expires \_\_\_\_\_

EUGENE H. KRAUSE  
Notary Public, Ramsey County, Minn.  
My Commission Expires April 23, 1969

This is to certify that we  
Schuler Construction Corp, a Minnesota Corporation  
First National Bank of St. Paul, a Minnesota Corporation, Assignee of  
Mortgagee. Owners of:  
All that part of Lot II, Block 14, Bel-Air Park No. 2 except the  
South 150 feet of the East 200 feet thereof.  
have caused the same to be surveyed and platted and hereafter known  
as Bel-Air Hills as shown by this plat, and hereby dedicate to  
the public and for public use forever all easements as shown  
hereon.

Witness our hands and seals this 22<sup>nd</sup> day of June, A.D. 1965  
In the presence of:

Schuler Construction Company  
*Robert Schuler* Pres.  
*Judith Chernow*  
First National Bank of St. Paul  
*Barbara Absey* Mortgagee  
*Christine J. Scharr*  
*Richard M. Vogel* Sec.  
*Ernest J. Haughey* Asst. Cashier  
*W.H. Quisenberry* Asst. Cashier

State of Minnesota,  
County of Ramsey, s.s.  
On this 22<sup>nd</sup> day of June, A.D. 1965 before me appeared  
Robert G. Schuler and Richard M. Vogel who each being duly sworn  
did say that they are respectively the President and Secretary of the  
Schuler Construction Corp, a Minnesota Corporation, the  
corporation named in the foregoing instrument and the seal affixed  
to same instrument is the corporate seal of said corporation and  
that said instrument was signed and sealed in behalf of said  
corporation by the authority of its Board of Directors and said  
Robert G. Schuler and Richard M. Vogel acknowledge said  
instrument to be the free act and of said corporation.

*E. Schumacher*  
Notary Public, Ramsey County, Minn.  
My Commission expires \_\_\_\_\_

State of Minnesota,  
County of Ramsey, s.s.  
On this 24<sup>th</sup> day of June, A.D. 1965 before me appeared  
*Ernest J. Haughey* and *W.H. Quisenberry* who each being  
duly sworn did say that they are respectively the Asst. Cashiers  
and \_\_\_\_\_ of the First National Bank of St. Paul, a  
Minnesota Corporation, the corporation named in the foregoing  
instrument and the seal affixed to same instrument is the corporate  
seal of said corporation and that said instrument was signed and  
sealed in behalf of said corporation and said *Ernest J. Haughey*  
and *W.H. Quisenberry* acknowledge said instrument to be the free  
act and deed of said corporation

*Ernest J. Haughey*  
Notary Public, Ramsey County, Minn.  
My Commission expires \_\_\_\_\_

Accepted and approved this 24<sup>th</sup> day of June, A.D. 1965

*Charles O. Georgi*  
*Ernest J. Haughey*  
*W.H. Quisenberry*  
*Walter Rosen*  
Plat Commission  
Commissioner of Public Works

Accepted and approved by the City Council of the City of White  
Bear Lake on this 27<sup>th</sup> day of APRIL, 1965

*Walter L. Knollig* Mayor  
*Ernest J. Haughey* Attest Clerk

Recorded October 29, 1965