

CITY HEIGHTS RAMSEY COUNTY, MINN.

SCALE-1 INCH = 120 FEET.
• INDICATES IRON MONUMENT

R.C. WOLFGRAM
SURVEYOR

I hereby certify to having surveyed the property described on this plat as City Heights and have placed iron monuments at the corners shown and the same is correct.
There is no low wet ground nor any traveled road or easement on or across same except as shown.

State of Minnesota } s.s.
County of Ramsey }
On this 17th day of May A.D. 1956
before me the undersigned personally appeared R.C. Wolgram, to me known to be the person described in and who executed the foregoing instrument and acknowledged that he executed the same as his free act and deed.

R.C. Wolgram
Registered Surveyor
Minnesota Certificate No. 1340

Edward D. Clapp
Notary Public, Ramsey County, Minnesota.
My Commission expires Jan 9, 1962

This is to certify that Rohland H. Thomssen, James R. Oppenheimer and John G. Robertson, as trustees of William D. Clapp Trust A; Rohland H. Thomssen, James R. Oppenheimer and John G. Robertson, as trustees of William D. Clapp Trust B; William D. Clapp, Harold P. Nelson and John G. Robertson, as trustees of Rohland H. Thomssen Trust A; and William D. Clapp, Harold P. Nelson and James R. Oppenheimer as trustees of Rohland H. Thomssen Trust B, owners of the land described as follows:—
The South three-fourths (S. 3/4) of West one-half (W. 1/2) of Southeast quarter (S.E. 1/4) of Section eighteen (18), Township twenty-nine (29), Range twenty-two (22) except the East 300 feet of West 458 feet of South 290 feet thereof, and except the South 158 feet of West 158 feet thereof, and except that part thereof described as follows: Beginning at the Southeast corner of afore described fraction of said Section eighteen (18); thence running West on the South line thereof, 375 feet; thence North parallel to the East line of said fraction, 290 feet; thence deflecting 60°56'20" to the left, a distance of 97.35 feet; thence North parallel to the West line of said fraction, 210 feet; thence Northeast to a point on said East line distant 740 feet North of said Southeast corner; thence South on said East line to point of beginning; and except that part of said fraction lying Northeasterly of a line described as follows: Beginning at a point on the North line of said fraction distant 805.34 feet East of the Northwest corner thereof; thence running Southeast at an angle of 84°03' to said North line, 460.24 feet; thence Southeast to a point on the East line of said fraction distant 640 feet South of the Northeast corner thereof; have caused the same to be surveyed and platted and hereafter known as City Heights as shown by this plat and hereby dedicate to the public and for the public use forever all streets, avenues, drives, curves and drainage easements as shown.
Witness our hands and seal this 17th day of May A.D. 1956.

In presence of

<i>Edward D. Clapp</i>	William D. Clapp Trust A	By <i>Rohland H. Thomssen</i> Trustee
<i>Robert B. Winger</i>		By <i>James R. Oppenheimer</i> Trustee
<i>Carol A. McMahon</i>		By <i>John G. Robertson</i> Trustee
<i>Edward D. Clapp</i>	William D. Clapp Trust B.	By <i>Rohland H. Thomssen</i> Trustee
<i>Robert B. Winger</i>		By <i>James R. Oppenheimer</i> Trustee
<i>Carol A. McMahon</i>		By <i>John G. Robertson</i> Trustee
<i>Edward D. Clapp</i>	Rohland H. Thomssen Trust A	By <i>William D. Clapp</i> Trustee
<i>Robert B. Winger</i>		By <i>Harold P. Nelson</i> Trustee
<i>Carol A. McMahon</i>		By <i>John G. Robertson</i> Trustee
<i>Edward D. Clapp</i>	Rohland H. Thomssen Trust B	By <i>William D. Clapp</i> Trustee
<i>Robert B. Winger</i>		By <i>Harold P. Nelson</i> Trustee
<i>Carol A. McMahon</i>		By <i>James R. Oppenheimer</i> Trustee

State of Minnesota } s.s.
County of Ramsey }
On this 17th day of May A.D. 1956 before me the undersigned personally appeared Rohland H. Thomssen, trustee of William D. Clapp Trust A, and trustee of William D. Clapp Trust B; James R. Oppenheimer, trustee of William D. Clapp Trust A, trustee of William D. Clapp Trust B, and trustee of Rohland H. Thomssen Trust A; William D. Clapp, trustee of Rohland H. Thomssen Trust A, and trustee of Rohland H. Thomssen Trust B; and Harold P. Nelson, trustee of Rohland H. Thomssen Trust A and trustee of Rohland H. Thomssen Trust B; to me known to be the persons described in and who executed the foregoing instrument and acknowledged that they executed the same as their free acts and deeds as trustees as named in the foregoing instrument.

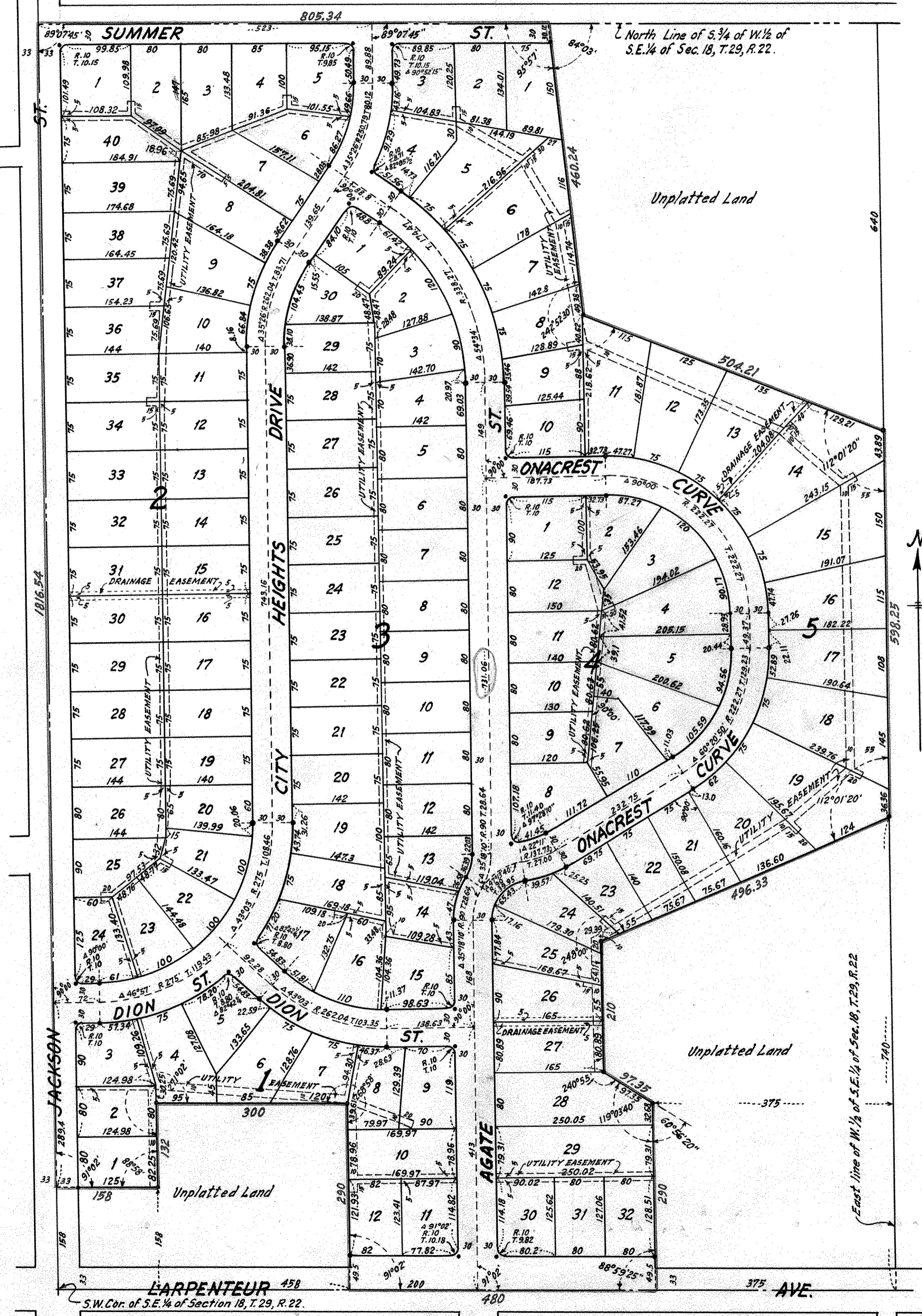
Edward D. Clapp
Notary Public, Ramsey County, Minnesota.
My Commission expires _____

Accepted and approved by the Township Board of New Canada Township June 11 A.D. 1956
Samuel R. Schmidt
Clerk of Township

Accepted and approved by the Board of County Commissioners this 11th day of June A.D. 1956, Ramsey County, Minnesota.
Gene Smith
County Auditor, Ramsey County, Minnesota.

Accepted and approved this 7th day of June A.D. 1956
Hubert Bluest.
P. D. Jones Plat Commission
Abraham Crumpton
Frank Magistelli Commissioner of Public Works

Recorded June 14, 1956 Abstract #1400382



Building setbacks to be a minimum of 30 feet from all public thoroughfares.