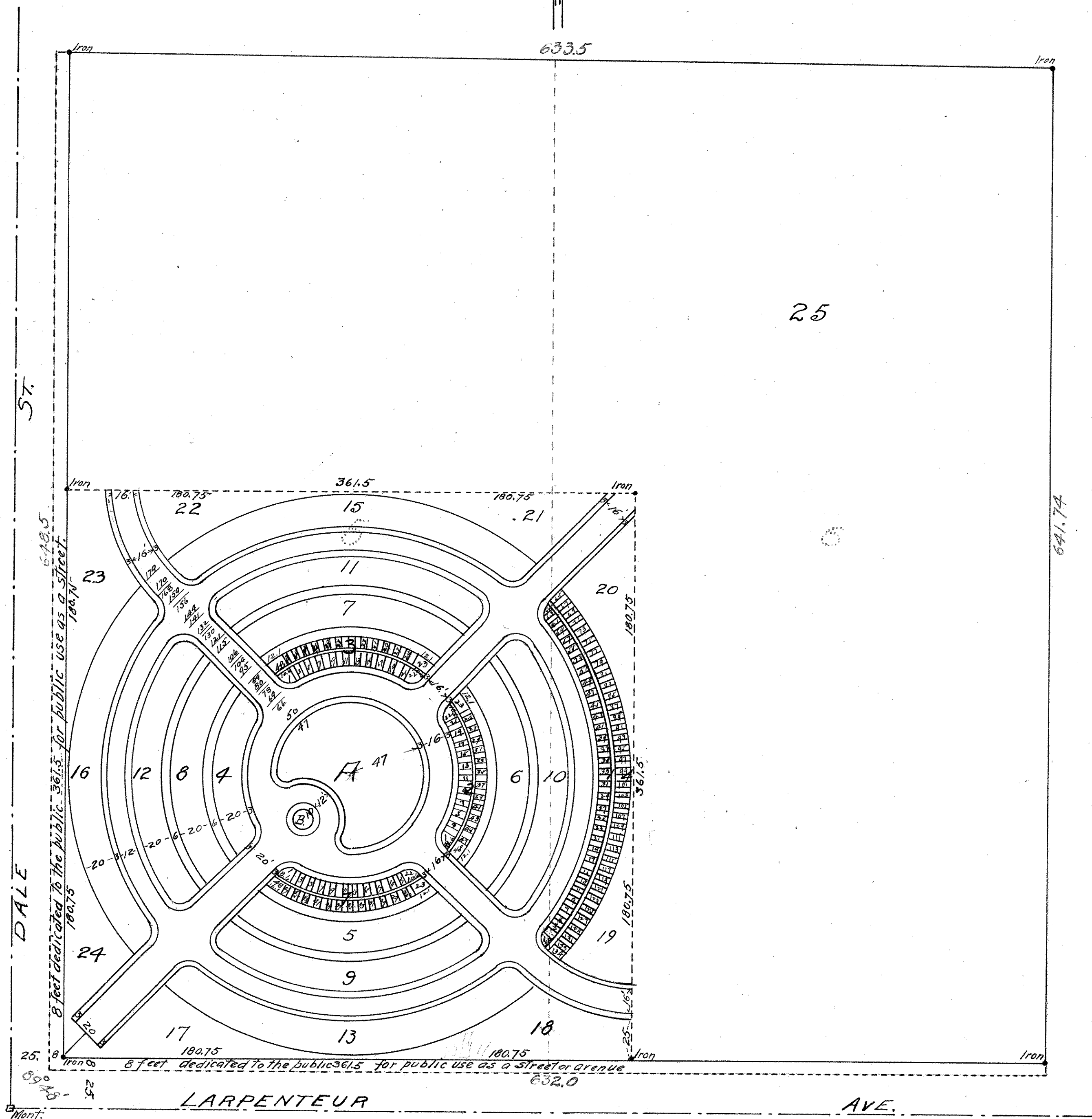


# TEMPLE OF AARON CEMETERY.

JOHN B. IRVINE, SURVEYOR.

OCTOBER, 1918.

Scale 50ft. per inch.



25

I hereby certify to having surveyed and platted the property as described on this map as Temple of Aaron Cemetery and have placed iron monuments at the corners thereof as shown on this map and the same is correct.

John B. Irvine, Surveyor.

State of Minnesota } On this first day of November A.D. 1918.  
County of Ramsey } personally appeared before me the undersigned John B. Irvine to me well known and acknowledged that he executed the foregoing certificate as his own free act and deed.

L. H. Hooke

Notary Public.

My Commission Expires Apr. 21, 1922 Ramsey County, Minnesota.

This is to certify that Temple of Aaron Congregation a corporation, duly organized and existing under the laws of the State of Minnesota, owner of lots five and six Sarahs Oul Lots has caused the same to be surveyed and platted and hereafter known as Temple of Aaron Cemetery. In witness where of this certificate has been executed in behalf of Temple of Aaron Congregation a corporation, by its president and Secretary and its corporate seal to be herewith affixed by authority of its board of directors this 29th day of October A.D. 1918.

In presence of  
R. N. Katz President  
Solis J. Ryden S. L. Grosby Secretary

State of Minnesota } On this 29th day of Oct. A.D. 1918.  
County of Ramsey } before me appeared R. N. Katz and S. L. Grosby to me personally known who being duly sworn did say that they are the President and Secretary respectively of Temple of Aaron Congregation and that the seal affixed to this instrument is the corporate seal of said corporation and that said instrument was signed and sealed in behalf of said corporation by authority of its board of directors and said R. N. Katz and S. L. Grosby acknowledged said instrument to be the free act and deed of said corporation.

J. Gudowaty  
My Commission Expires May 1st 1920 Notary Public.  
Ramsey County, Minnesota.

Accepted and Approved this 4th day of November A.D. 1918.

George H. Jensen } Plat Commission.  
Charles W. Johnson }  
Jas. W. Jordan } Commissioner of Public Works.  
M. L. Cross }

The sides of all lots are Radial lines.  
The side of lot facing center Block A is the front of the lot.  
The front of all corner lots have a nine-foot radius curve.  
The front of lots 2 to 21 & 24 to 41 in Blocks 1, 2, 3 are 3 1/2 ft wide.  
The rear of all corner lots are as marked.  
The rear of lots 2 to 21 in Blocks 1, 2, 3, are 3.96 feet wide.  
The rear of lots 24 to 41 in Blocks 1, 2, 3, are 3.90 ft. wide.  
The rear of lots 2 to 63 & 65 to 134 in Block 14 are 3.7 ft wide.  
The front of lots 2 to 63 & 65 to 134 in Block 14 are 3 1/2 ft. wide.