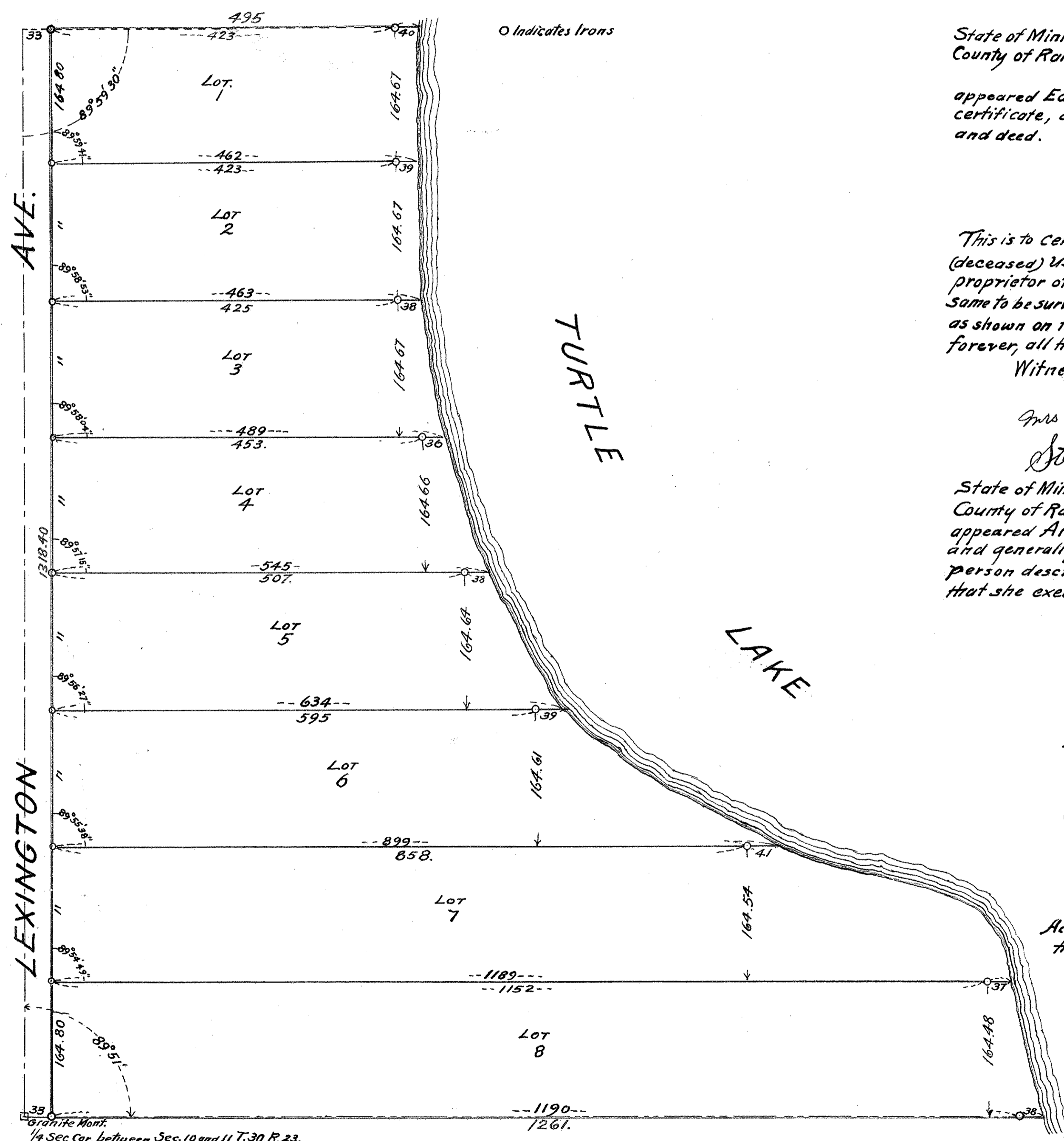


# SCHIFSKY'S WEST SHORE PARK

SCALE 1" to 100'

Edward R. Schafer, Surveyor.



St. Paul, Minn. November 21, 1911.  
I hereby certify to having surveyed and platted the property described on this plat as "Schifsky's West Shore Park", comprising Government Lot 3 Section 11, Township 30 Range 23 in Ramsey County, Minnesota, and that said plat is a correct representation of said survey; that all distances are correctly shown on said plat, that all monuments have been correctly placed in the ground as shown; that the outside boundary lines are correctly designated on said plat, and that the topography of the land is correctly shown on said plat and that the highways and Lake are correctly located and plainly shown and designated on said plat and the same is correct.  
Edward R. Schafer, Surveyor.

State of Minnesota, } S.S.  
County of Ramsey. }  
On this 21<sup>st</sup> day of November, A.D. 1911, before me personally appeared Edward R. Schafer, to me known to be the person who executed the foregoing certificate, and acknowledged that he executed the same as his own free act and deed.

Silas E. Foreman  
Notary Public, Ramsey County, Minn.  
My commission expires January 27, 1914

This is to certify that Anna Januszewsky, widow of Thomas Januszewsky (deceased) usually and generally known as and called Anna Schifsky, - the proprietor of Government Lot 3 Section 11, Township 30, Range 23, has caused the same to be surveyed and platted and hereafter known as "Schifsky's West Shore Park" as shown on this plat, and hereby dedicate to the public, and for the public use forever, all the streets and avenues as hereon indicated.

Witness my hand and seal this 21<sup>st</sup> day of November, A.D. 1911.

In presence of  
Mrs. Anna Stowell  
Stephen Schifsky  
Anna Januszewsky  
generally known as Anna Schifsky

State of Minnesota, } S.S.  
County of Ramsey. }  
On this 21<sup>st</sup> day of November, A.D. 1911 before me personally appeared Anna Januszewsky, widow of Thomas Januszewsky (deceased) usually and generally known as and called Anna Schifsky, to me known to be the person described in, and who executed the foregoing instrument, and acknowledged that she executed the same as her own free act and deed.

Silas E. Foreman  
Notary Public, Ramsey County, Minn.  
My Commission expires January 27, 1914

Accepted and approved this 18<sup>th</sup> day of December, 1911.

J. H. Aman  
J. J. Haricy  
O. Claussen  
Plat Commissioners.  
City Engineer.

Accepted and approved by the Board of County Commissioners for the County of Ramsey, State of Minnesota, on the 18<sup>th</sup> day of December A.D. 1911

Geo. J. Rees  
County Auditor  
Per J. H. Schifsky  
Dep. Co. Aud.