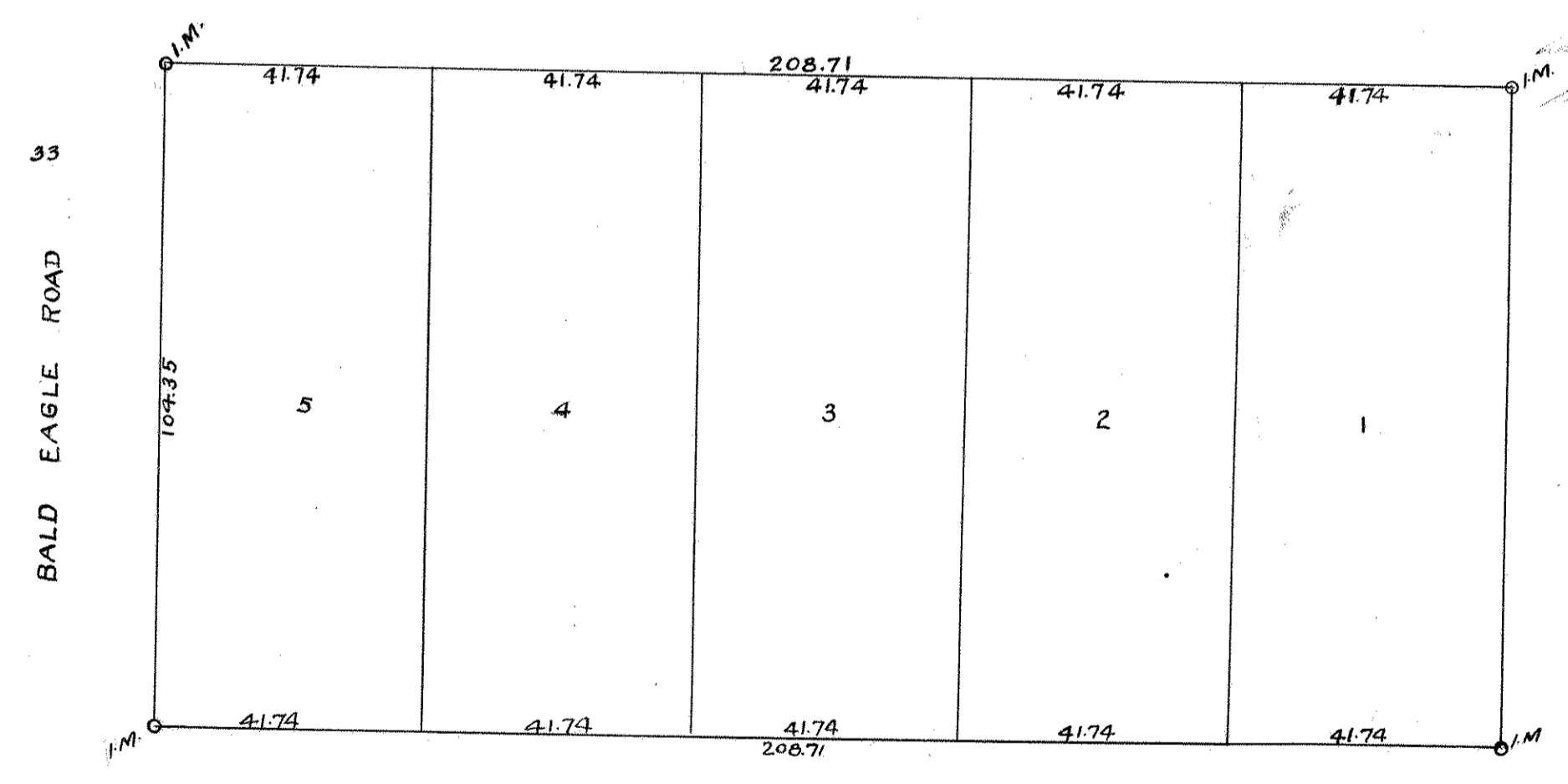


Oak Park Addn. to White Bear

SCALE 200 FT. TO AN IN.
RECORDED SEPT. 19 - 1885 - BOOK PAGE 25
P.M. DAHL - SURVEYOR
• INDICATES MONUMENTS

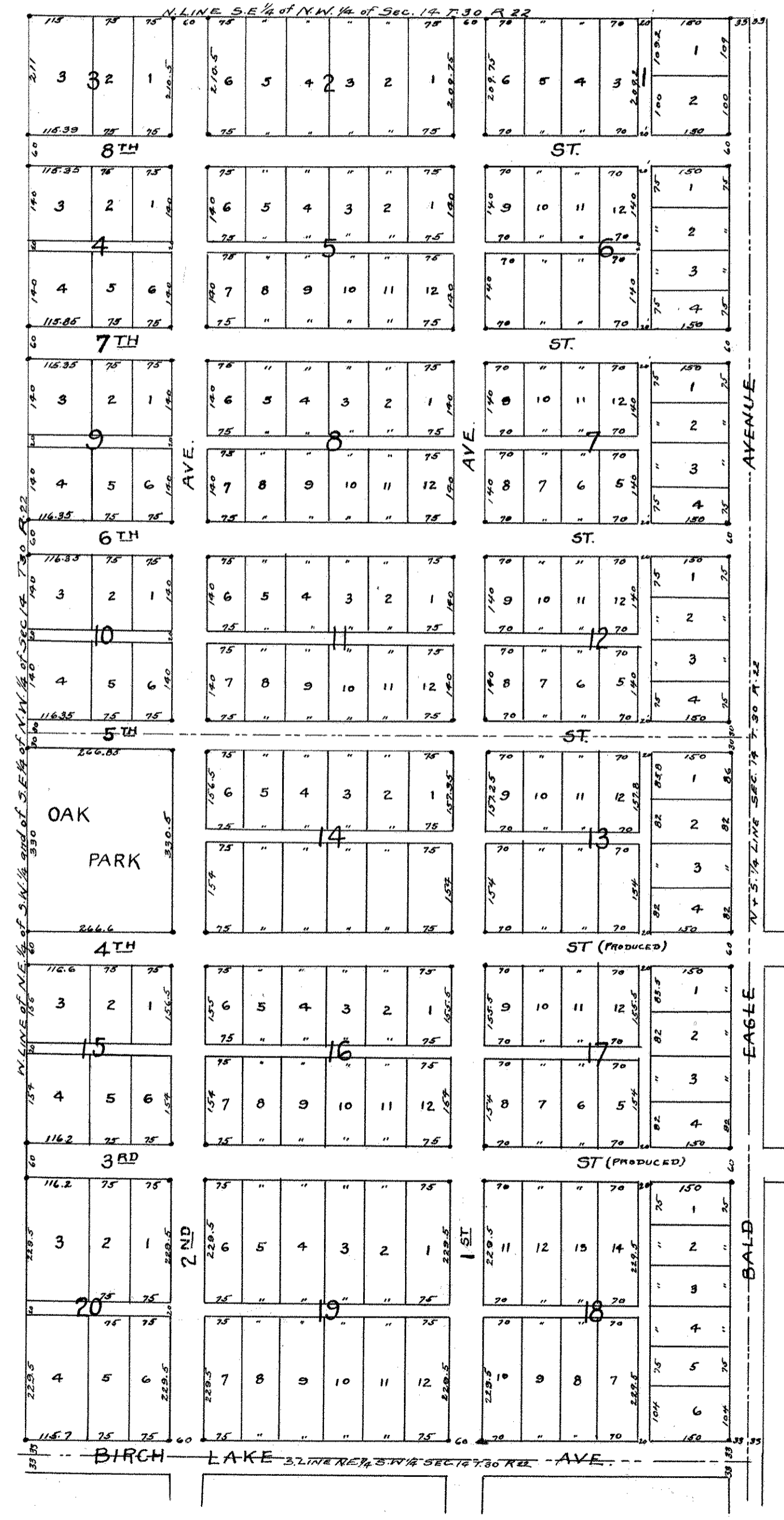
Mageniss Addn. to White Bear Lake

SCALE 25 FT. TO AN IN.
RECORDED FEB. 5 - 1887 - BOOK PAGE 25
GATES & JOHNSON L.R. SURVEYOR
1886



STONE MONUMENT
1/4 POST
Bef Sec 14-T 23
T. 30-R 22

DESCRIPTION:
The Duncan E. Ross 1/2 Acre situated in S.W. 1/4 of S.W. 1/4 of Sec. 14 T. 30 R. 22



DESCRIPTION:
N.E. 1/4 of S.W. 1/4 and S.E. 1/4 of N.W. 1/4 of Sec. 14 T. 30 R. 22