

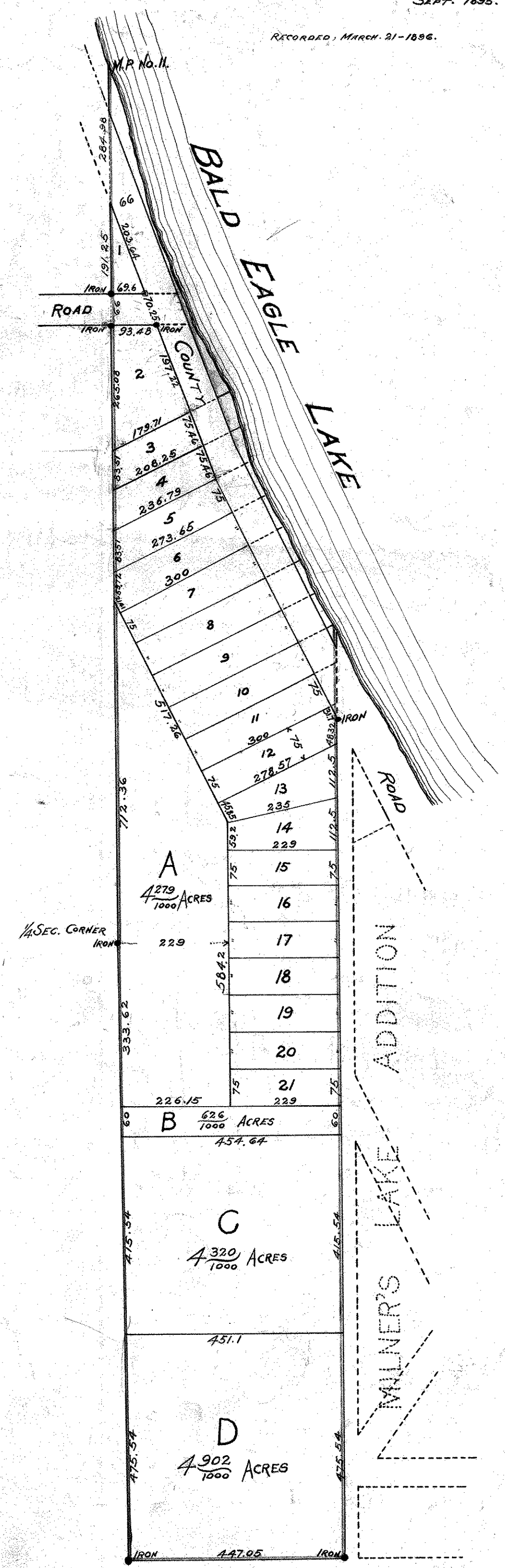
THE EYRIE

RAMSEY CO. MINN.

SCALE: 200' PER INCH.

FOWBLE & FITZ, SURVEYORS.
SEPT. 1895.

RECORDED, MARCH 21 - 1896.



289.70
 53.12
 191.1
 66
 225.08
 222
 259.70
 712.26
 2642.81

55

264.55
 314.56
 1319.45
 1284.70
 34.25

932.62
 60
 415.54
 475.54
 1284.70

Description
 Lot 1, Section 11 T.30 N. R. 22 W.
 A.P.M. except Milner's Lake Addition
 to St Paul