

LAKEVIEW ADDITION TO MINNEAPOLIS STOCKYARDS

SCALE: 80 FT. TO 1 INCH.

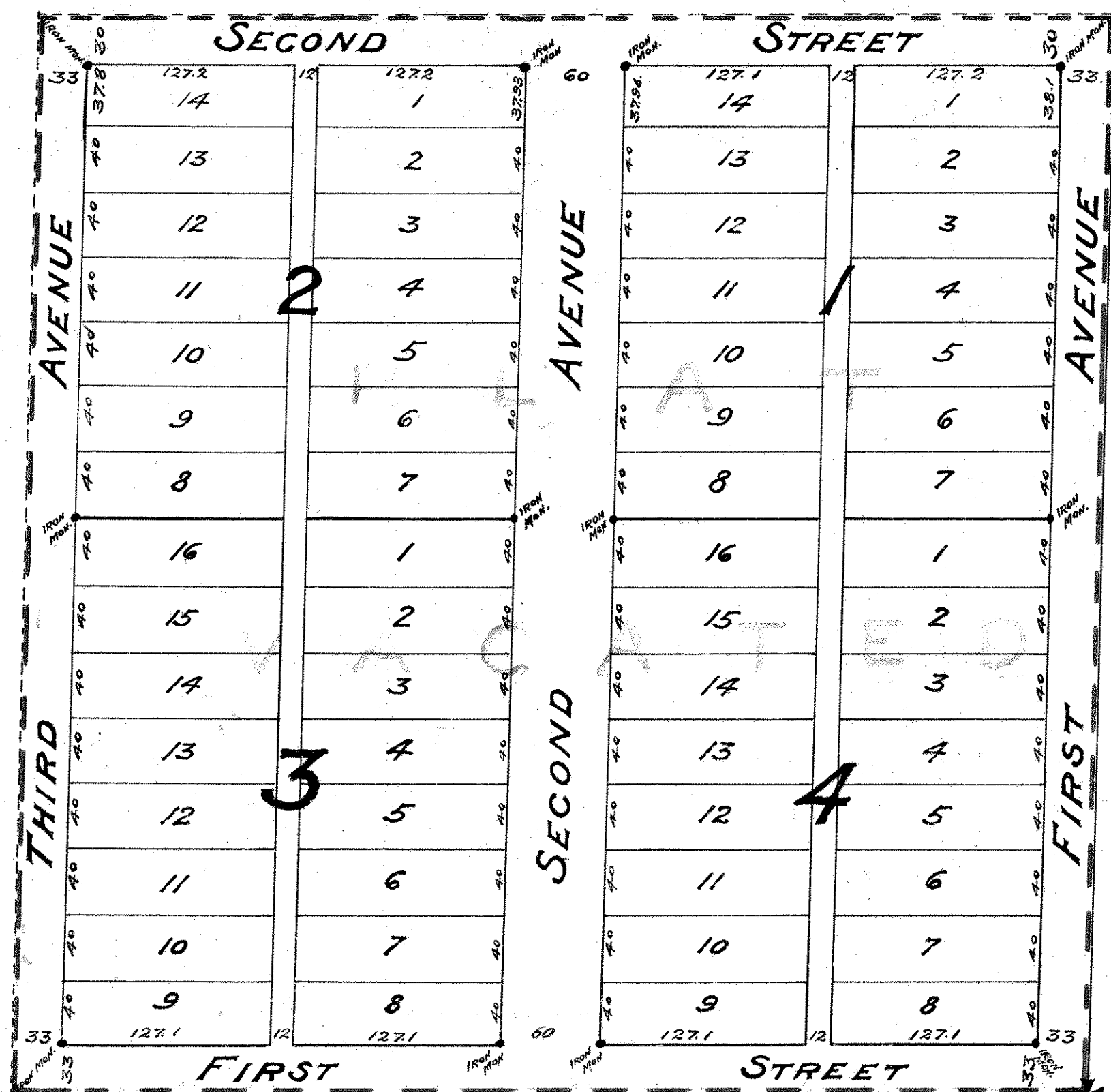
RECORDED APR. 19 - 1893.

GEORGE MARSH, CIVIL ENGINEER.

NOTE: ALL STREETS, AVENUES AND ALLEYS
HEREON SHOWN ARE DEDICATED.

DESCRIPTION: THE SE 1/4 OF SE 1/4 OF SE 1/4,
SEC. 18 - TOWN 30 N. - RANGE 23 W.

Vacated.
By
Order of DISTRICT COURT
Recorded April 14th 1906
Book 52 Misc. P. 622.



SOUTH WEST CORNER OF
SE 1/4 OF SE 1/4 OF SE 1/4 OF
SEC. 18 - T. 30 N. - R. 23 W.

SOUTH EAST CORNER OF
SECTION 18 - TOWNSHIP 30 NORTH
RANGE 23 WEST.