

BENNETT'S HARVESTER WORKS ADDITION

TO THE CITY OF ST. PAUL, RAMSEY Co. MINN.
1892

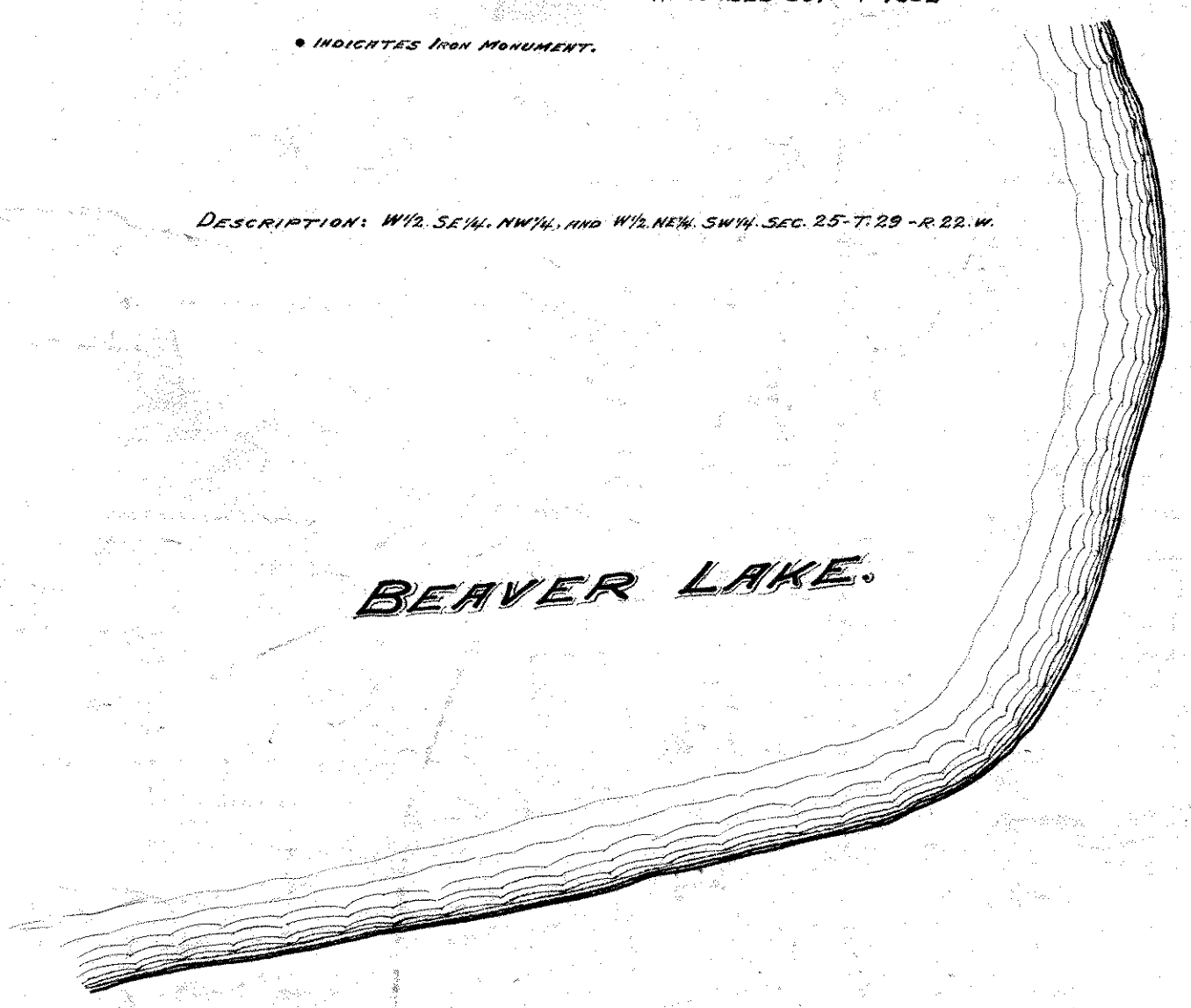
RECORDED OCT. 28th 1892

INDICATES FROM MONUMENT.

CHRIS. A. FORBES, SURV.

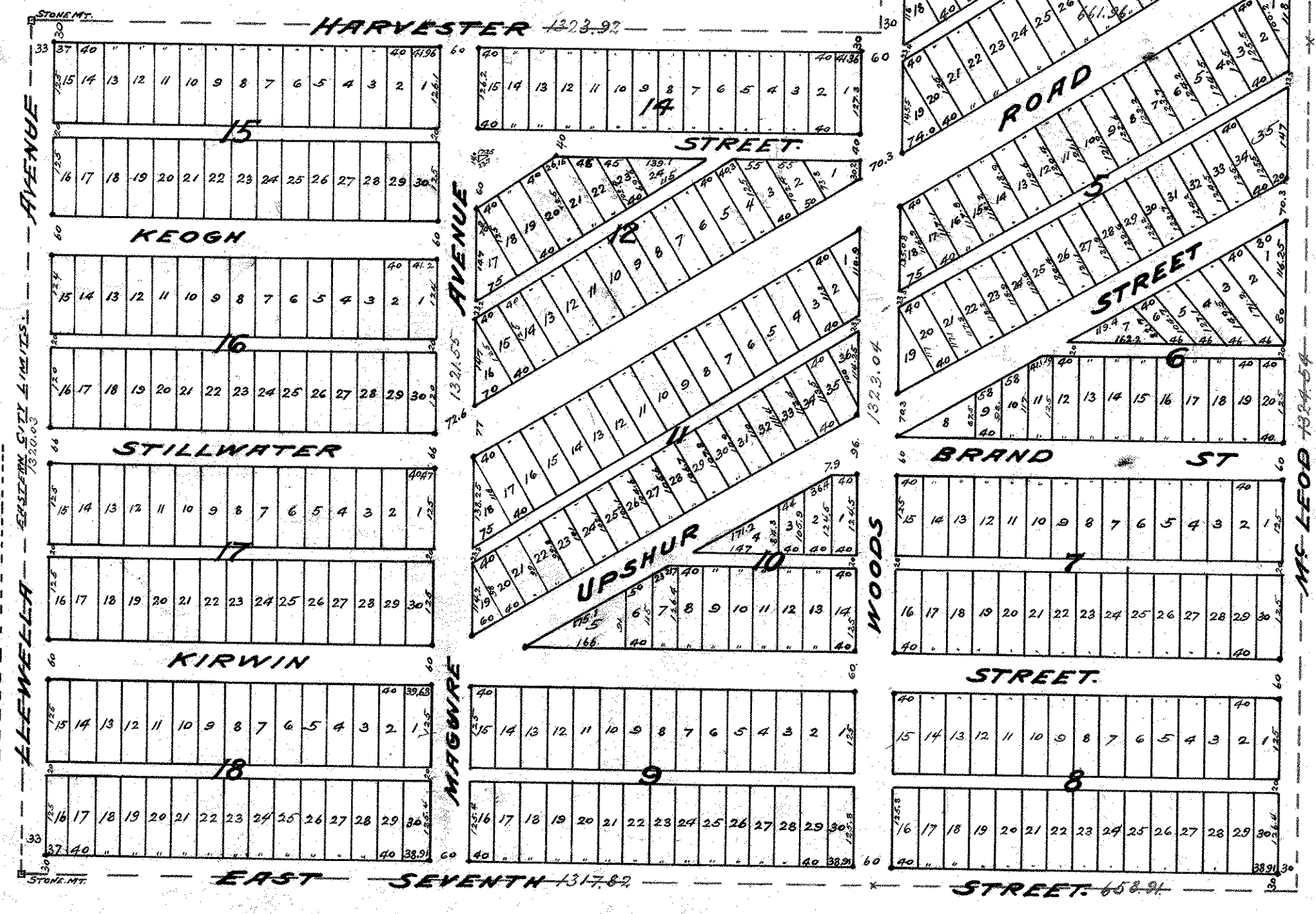
NOTE: ALL STREETS, AVENUES & ALLEYS
HEREON SHOWN ARE DEDICATED.

DESCRIPTION: W 1/2 SE 1/4 NW 1/4 and W 1/2 NE 1/4 SW 1/4 SEC. 25-T. 29 - R. 22. W.



BEAVER LAKE.

BEAVER LAKE ADD.



PLAT VACATED

18-314
74 0 448
except Llewella Avenue
Harvester Avenue between Llewella & Woods
Woods Avenue "Harvester & Cherry St.
all of Cherry St