

COLLEGE PLACE

MARSHALL'S DIV.

16.

Doc 12244d
 STATE OF MINNESOTA
 County of Ramsey
 Office of the Register of Deeds.
 This is to certify that the within instrument was filed for Record in this Office, at St. Paul, on the 18th day of July, A. D. 1890, and that the same was duly recorded in Book 122 of said County on page 44.
 By _____
 Register of Deeds.

• Indicates Iron Monument.
 Scale 1 inch = 100 ft.

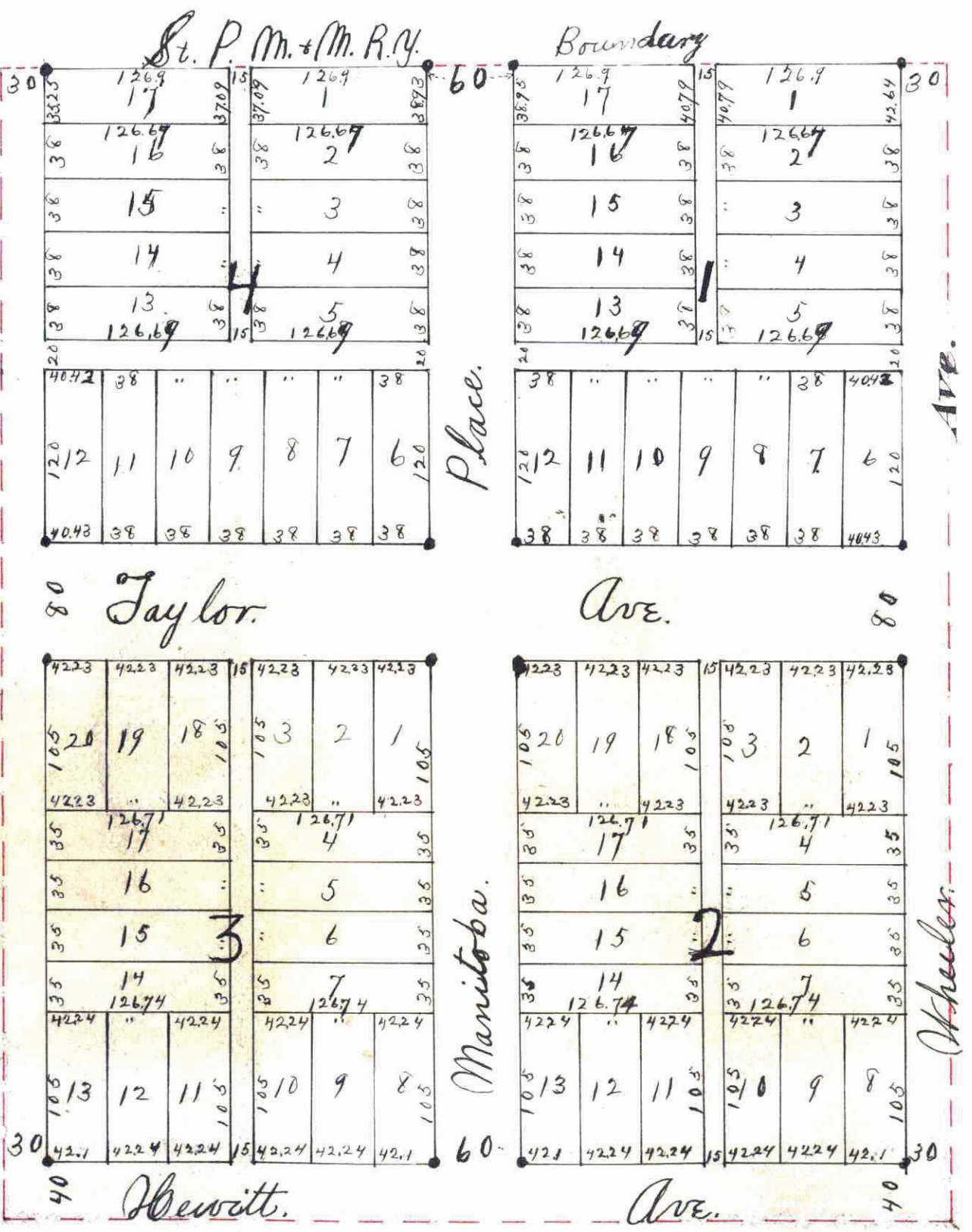
This plat document is an UNOFFICIAL copy of a Subdivision Plat or Registered Land Survey and is made available for information purposes only.
 To obtain an official copy please contact the Ramsey County Recorder's Office.

I hereby certify to having surveyed and platted the property as described on this map as College Place, Marshall's Div. and have placed iron monuments at the corners of each and every block as shown on this map and the same is correct.
 S. D. Springer
 Surveyor

State of Minnesota } S. D. On this 21st Day of July, A. D. 1890
 County of Ramsey } Personally appeared before the undersigned, S. D. Springer, to me well known, and acknowledged that he executed the foregoing certificate as his own free act and deed.
 Harry Estad
 Notary Public
 Ramsey County, Minnesota

This is to certify that Wm. R. Marshall, and Abby L. Marshall His Wife, Proprietors of the Streetly 1/2 of all that part of the N. 1/4 of the S. E. 1/4 of Sec 28 in Township 27 and Range 29, Ramsey County, Minnesota, that according to the U. S. Gov. Survey, which lies South of the strip of land (100 ft. in width and extending from East to West entirely over said 1/4 Sec.) lately owned by the 1st Division of the St. Paul & Pacific Railroad Co. The Parcel of land hereby intended, being bounded on the North by said strip of land formerly owned by the said 1st Division of the St. Paul and Pacific Railroad Co. On the East by a line drawn from North to South through the Centre of said 1/4 Section and on the South by the South line of said 1/4 Section, and on the West by the West line of said 1/4 Section and containing 12 1/2 Acres more or less, have caused the same to be surveyed and Platted and here-after known as College Place, Marshall's Div. as shown by this plat and hereby dedicate to the Public, and for the Public use forever, all the Streets, Avenues, Alleys, Parks, and Boulevards, as herein indicated. Witness our hands and seals this 21st Day of July, A. D. 1890

In presence of
 A. M. Norton }
 S. D. Springer }
 State of Minnesota } S. D. On this 21st Day of July, A. D. 1890 Personally came before
 County of Ramsey } me, the undersigned, William R. Marshall and Abby L. Marshall, His Wife, to me well known and they acknowledged that they executed the foregoing certificate as their own free act and deed.
 A. M. Norton
 Notary Public.
 Ramsey County, Minnesota



Accepted and approved this 25th Day of July, A. D. 1890
 [Signatures]
 Flat Commissioners
 City Engineer

Accepted by the common council of the City of St. Paul on the 2nd Day of August 1890
 [Signature]
 City Clerk

Taxes _____
 County Auditor
 Ramsey County, Minnesota.
 Assessments _____
 City Treasurer
 St. Paul.

Office of County Treasurer,
 ST. PAUL, MINN.
 AUG 11 1890
 1889 TAX PAID.
 A. H. NELSON, County Treasurer.
 Ruyne.

CITY TREASURER'S OFFICE
 ST. PAUL, MINN.
 AUG 11 1890
 ASSESSMENTS PAID.
 [Signature]
 CITY TREAS.

Taxes Paid and Transfer Entered
 AUG 12 1890
 M. F. KAIN, County Auditor.
 Per [Signature]