

T. RUSSELL'S ADDITION

TO WHITE BEAR, RAMSEY CO MINN

1890.

I hereby certify that the above described property as described on this map as T. Russell's Addition to White Bear at the corners of each and every block as shown on this map.

Charles A. Forbes
Surveyor.

This plat document is an UNOFFICIAL copy of a Subdivision Plat or Registered Land Survey and is made available for information purposes only. To obtain an official copy please contact the Ramsey County Recorder's Office.

STATE OF MINNESOTA) ss.
County of Ramsey. On this Eleventh day of March 1890, I appeared before the undersigned, CHARLES A. FORBES, to me well known, and acknowledged the foregoing Certificate as his own free act and deed.
Edward J. Godfrey
Notary Public, Ramsey Co., Minn.

STATE OF MINNESOTA) ss.
County of Ramsey. Office of the Register of Deeds. This is to certify that the within instrument was filed for Record in this Office, at St. Paul, on the 27 day of March A. D. 1890 at 10 o'clock A. M., and that the same was duly recorded in Book 14 of 99 pages, page 32.
M. J. Bell
Register of Deeds.

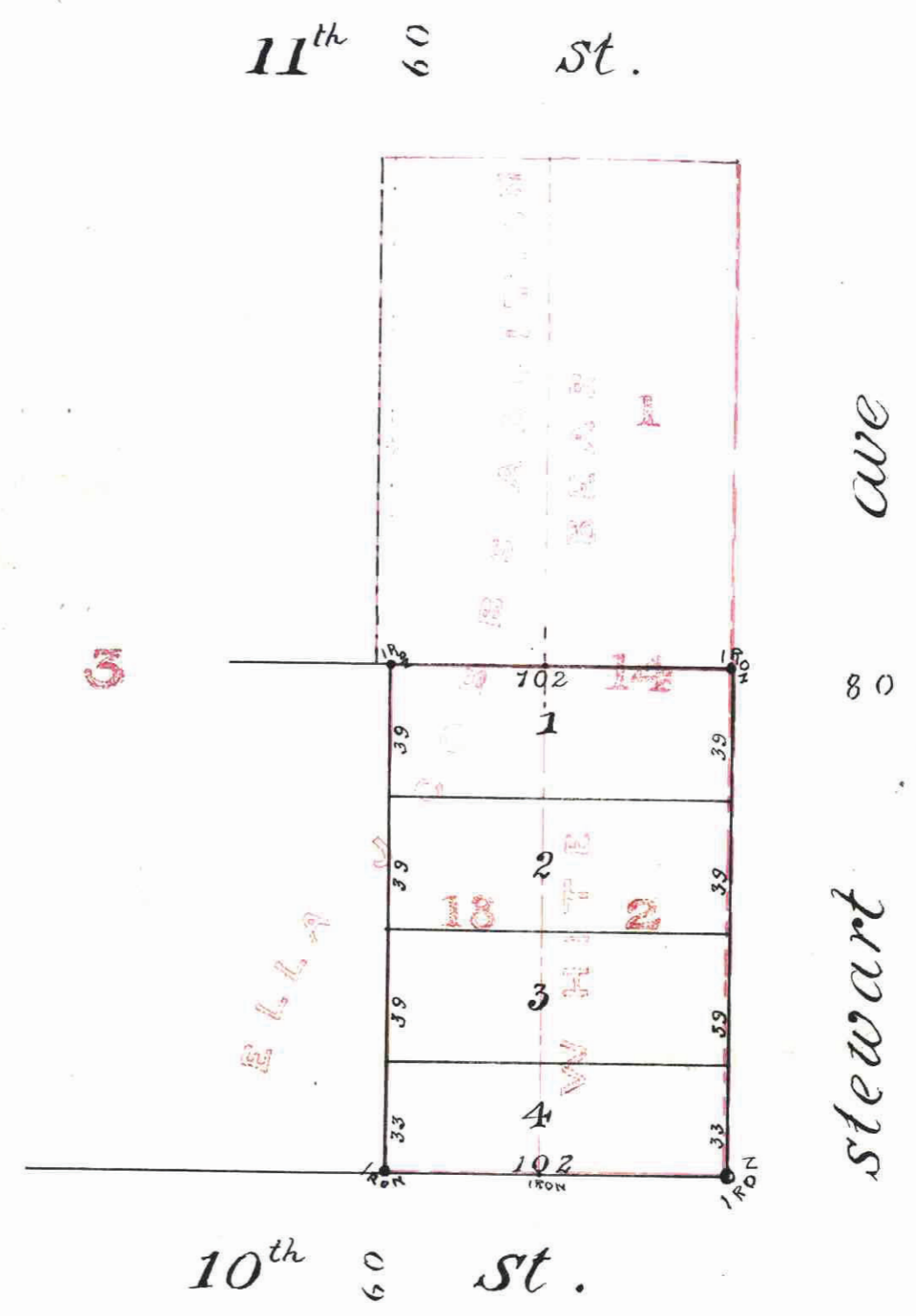
This is to certify that Thomas Russell and Delia B. Russell, his wife proprietors of Lot Two (2) Block Fourteen (14), White Bear and Lot Eighteen (18) Block Three (3) Ella J. Cobble's Addition to White Bear Ramsey Co Minnesota have caused the same to be surveyed and platted, and heretofore known as T. Russell's Addition to White Bear Ramsey Co. Minnesota and shown by this plat, and to be open to the public, and for the public use thereof, all the streets, avenues, alleys, lanes and boulevards, as herein indicated. Witness our hands and seals, this Eleventh day of March 1890.

In presence of
Edward J. Godfrey Thomas Russell (read)
Charles A. Forbes Delia B. Russell (read)

State of Minnesota) ss.
County of Ramsey. On this Eleventh day of March A. D. 1890, personally came before me Thomas Russell and Delia B. Russell, his wife, to me well known, and they acknowledged the foregoing Certificate and purposes therein expressed.
Edward J. Godfrey
Notary Public,
Ramsey County, Minn.

Accepted and approved this ninth day of March A. D. 1890.
Amos T. Blake
John H. Sells
Plat Commissioners.
L. W. Russell
Clerk

I hereby certify that I have made all the necessary survey to determine the accuracy of the annexed plat and find that the monuments for the guidance of future surveys as shown on the plat have been correctly placed that the boundary lines of the land platted are correctly shown on the plat and that the sizes of all fractional lots are as given on plat.
H. E. Clark
Deputy County Surveyor
Ramsey Co Minn.



Taxes Paid and Transfer Entered
MAR 2 1890
M. F. KAIN, County Auditor.
Per M. F. Kain

Office of County Treasurer,
ST. PAUL, MINN.
MAR 21 1890
1890 TAX PAID.
A. H. NELSON, County Treasurer.