

BELMONT ADDITION

TO CITY OF ST PAUL, MINN.

SCALE, 40 FEET TO 1 INCH.

32

I hereby certify to having surveyed and platted the property as described on this map as Belmont Addition to the City of St. Paul, Minn., and have placed iron monuments at the corners of each and every block as shown on this map, and the same is correct.

Charles A. Ashe
Surveyor.

STATE OF MINNESOTA, } ss.
County of Ramsey, }
On this 29th day
of May A. D. 1889, personally appeared before the undersigned, CHARLES A. FORBES, to me well known, and acknowledged that he executed the foregoing Certificate as his own free act and deed.

Edward J. Goodfellow
Notary Public, Ramsey Co., Minn.

This is to certify that Annie E. Keller, widow, proprietor of Lot Thirteen (13) of Block One (1) of Keller's Sub division of Block Eleven (11) of Lyman Dayton's Addition to the City of St. Paul has caused the same to be surveyed and platted, and hereafter known as "Belmont" Addition to the City of St. Paul as shown by this plat, and hereby dedicates to the public, and for the public use forever, all the Streets, Avenues, Alleys, Parks and Boulevards, as herein indicated.

Witness my hand and seal, this First day of June 1889.

In presence of
Frederick M. Lloyd
Charles A. Calahan

Annie E. Keller

State of Minnesota, }
County of Ramsey, }
On this First day of June A. D. 1889, personally came before me, the undersigned, Annie E. Keller to me well known, and she acknowledged that she executed the foregoing Certificate for the uses and purposes therein expressed.

Frederick M. Lloyd
Notary Public,
Ramsey County, Minn.

Accepted and approved this First day of June A. D. 1889

John A. Taylor
John S. Dues
Plat Commissioners.

Accepted by the Common Council of the City of St. Paul, on the 18th day of June 1889

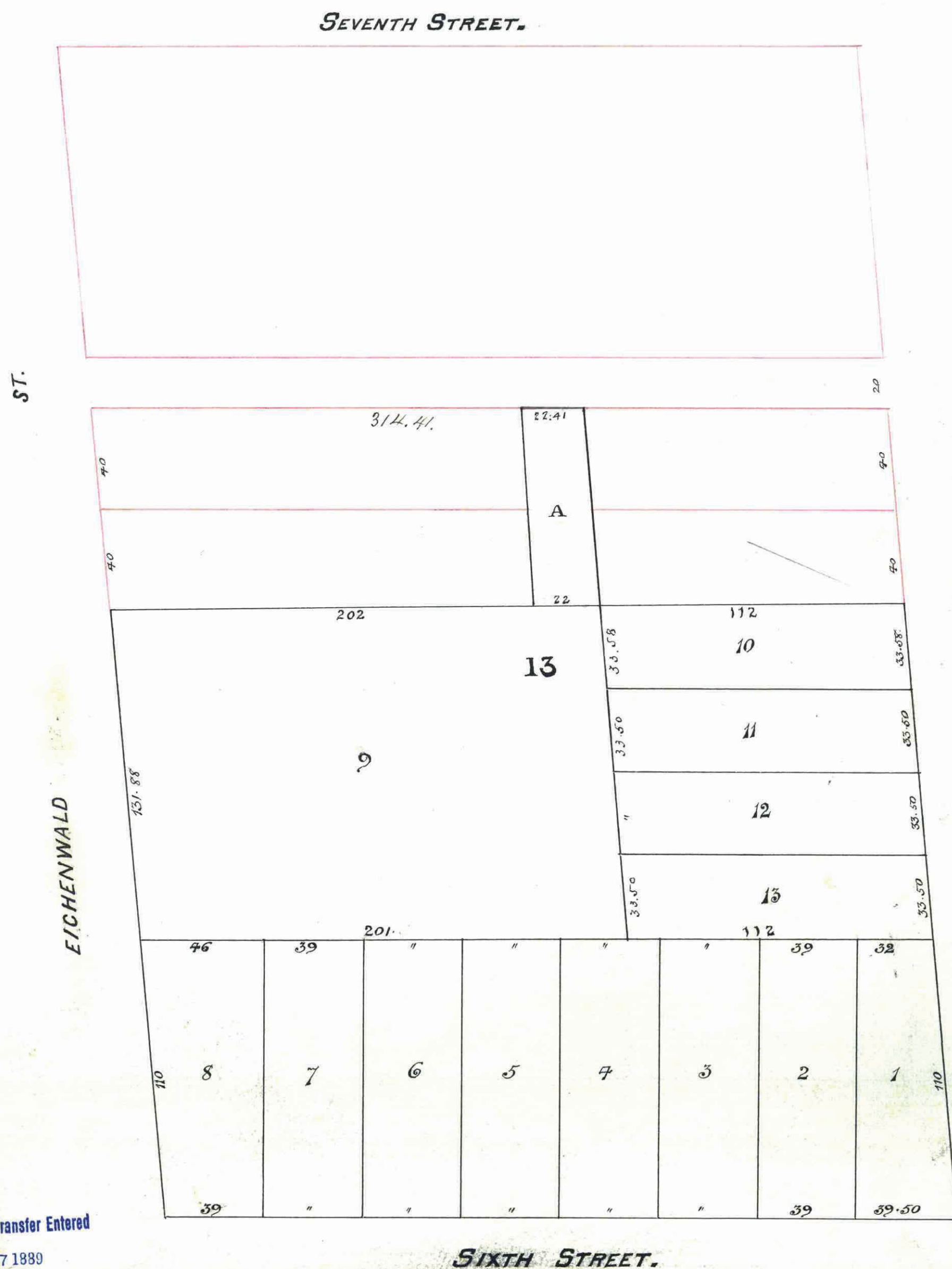
Thomas C. Brundage
City Clerk.

By J. A. Peterson
Deputy

CITY TREASURER'S OFFICE
ST. PAUL, MINN.
JUN 24 1889
ASSESSMENTS PAID
George Reed
CITY TREAS.

Office of County Treasurer
ST. PAUL, MINN.
JUN 25 1889
1888 TAX PAID.
A. M. NELSON, County Treasurer

Taxes Paid and Transfer Entered
JUN 27 1889
M. F. KAIN, County Auditor.
Per Moorbrugger



STATE OF MINNESOTA } ss.
County of Ramsey, }
Office of the Register of Deeds.
This is to certify that the within instrument was filed for Record in this Office, at St. Paul, on the 29th day of May A. D. 1889 at 6 o'clock P.M., and that the same was duly recorded in Book 102 of Deeds at page 12.

My Bell
Register of Deeds.

This plat document is an UNOFFICIAL copy of a Subdivision Plat or Registered Land Survey and is made available for information purposes only.

To obtain an official copy please contact the Ramsey County Recorder's Office.