

Office of Register of Deeds  
 County of Ramsey  
 filed for Record on the 10<sup>th</sup>  
 day of February A.D. 1876 at  
 2:45 o'clock P.M.  
 Alley Johnston  
 Register of Deeds.

Auditors Office Ramsey Co  
 St Paul Minn. Feb 10<sup>th</sup> 1876

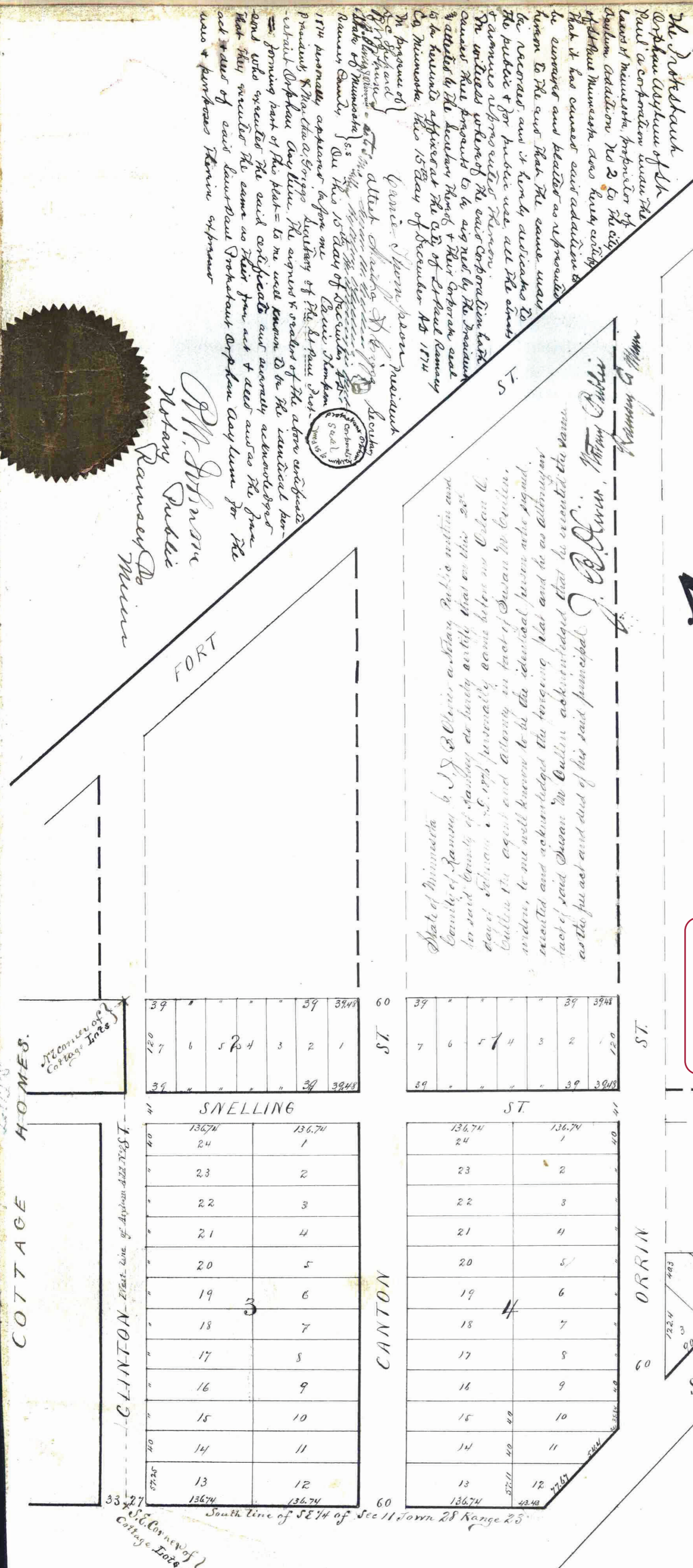
Taxes Paid  
 J. B. Davis  
 County Auditor  
 of Ramsey Co.

# ASYLUM

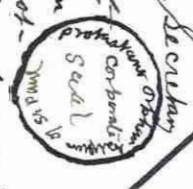
## Add

### No 2

This plat document is an UNOFFICIAL copy of a Subdivision Plat or Registered Land Survey and is made available for information purposes only.  
 To obtain an official copy please contact the Ramsey County Recorder's Office.



Attest  
 Notary Public  
 Ramsey Co  
 Minn.



I, J. B. Davis, a Notary Public within and for said County of Ramsey do hereby certify that on this 28<sup>th</sup> day of February A.D. 1876 personally came before me Susan M. Cullen the agent and attorney in fact of Susan M. Cullen, to me well known to be the identical person who signed, executed and acknowledged the foregoing plat and to as Attorney in fact of said Susan M. Cullen acknowledged that he executed the same as the free act and deed of his said principal.

J. B. Davis, Notary Public  
 Ramsey Co Minn.

City Engineers Office  
 St Paul January 18, 1876  
 I certify that I have examined the above map of Asylum Add<sup>n</sup> No 2, and that the streets as indicated on said map correspond with those in adjoining additions  
 D. W. Williamson  
 City Engineer

City Clerks office St Paul January 20 1876  
 I certify that Asylum Addition No 2 as represented on this plat was accepted by the Common Council of this City, on the 14<sup>th</sup> day of January 1876  
 M. J. Connor  
 City Clerk

St Paul  
 February 10  
 1876  
 Assessments for Local Improvements paid  
 St Paul City Treas  
 for Depts.  
 St Paul Dec 11<sup>th</sup> 1874  
 We certify that this is a correct map of "Asylum add No 2" as surveyed by us, and that ad. add. is a part of the Str of SE 1/4 of the SE 1/4 of Sec 11 T 28 R 25, and that the West line of said add. corresponds with the East line of the West five acres, in said South 1/2 of the SE 1/4 of the SE 1/4 of sec 11. T 28 Range 25  
 Carter & Statler  
 C. Engineers