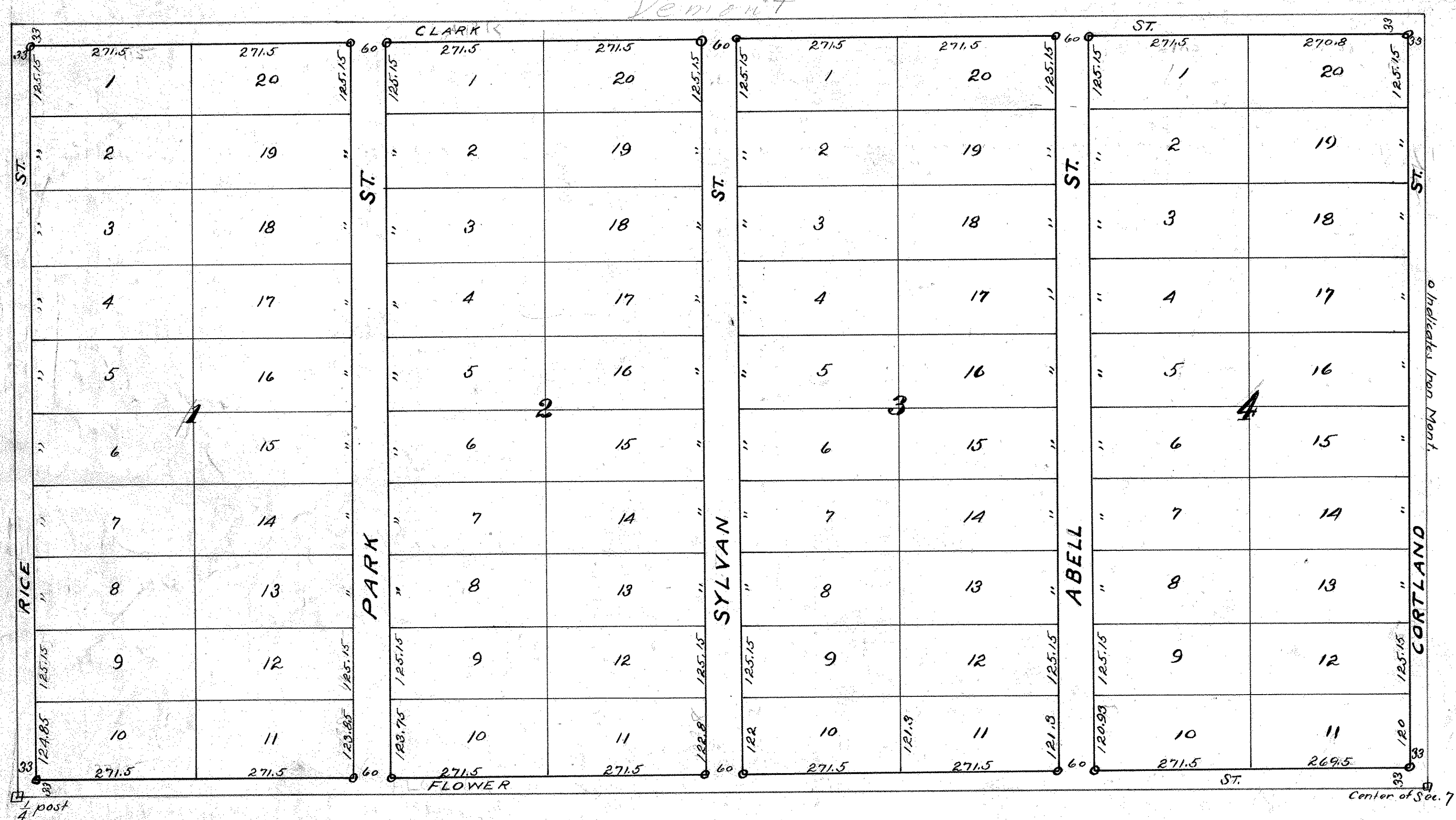


890

Demont



**North Rice St.
Acre Lots.**

Scale 150 ft. per inch.
 Recorded Jan. 18, 1886
 Book Y Page 42.
 J. B. Hawley Surveyor
 S. 1/2 of NW 1/4 of Section 7 T. 29, R. 23.

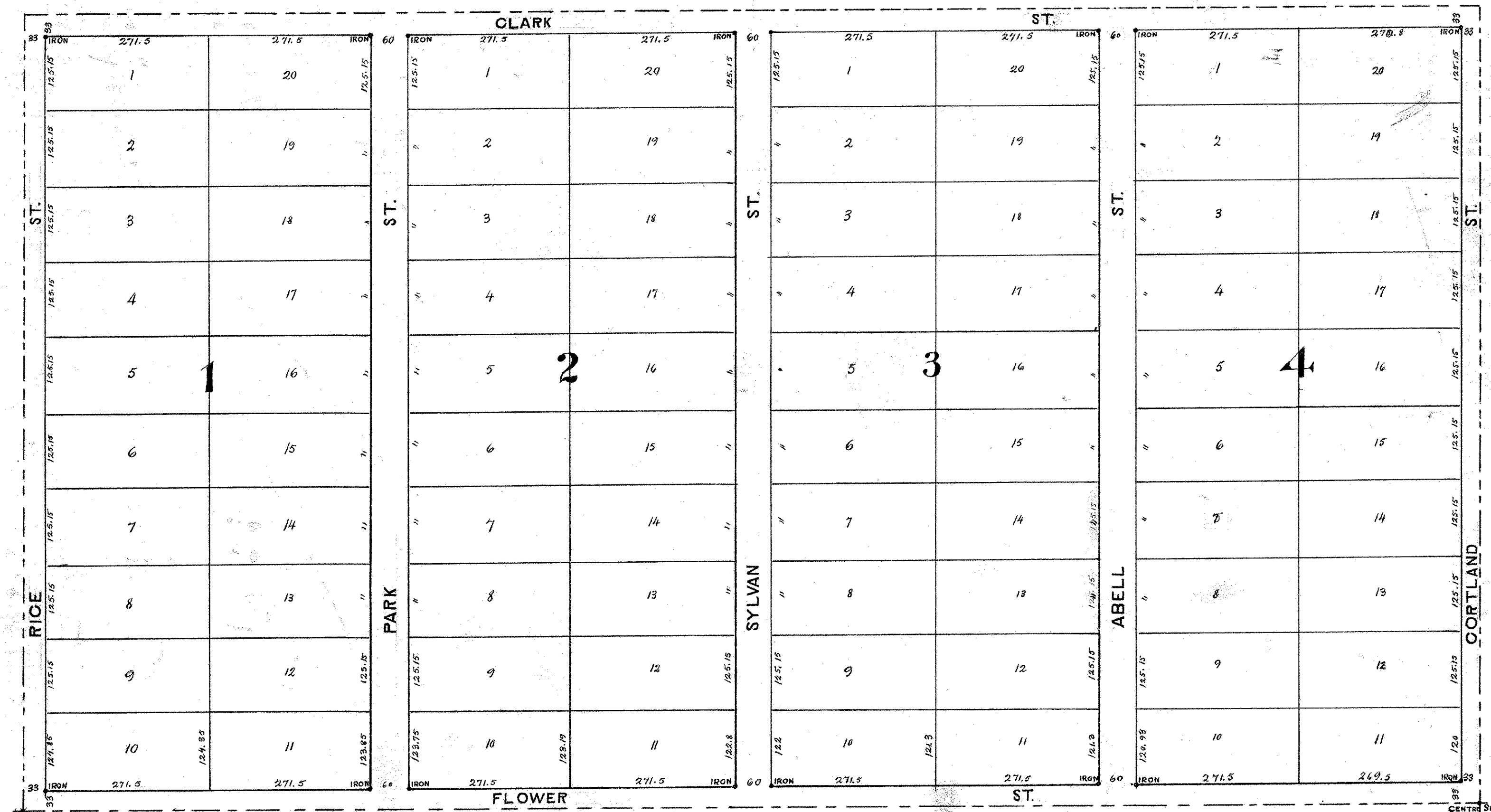


o indicates Iron Nail.

Center of Sec. 7

post

NORTH RICE STREET ACRE LOTS



Description: The S. 1/2 of the N.W. 1/4 Sec. 7 T. 29 R. 22