

24

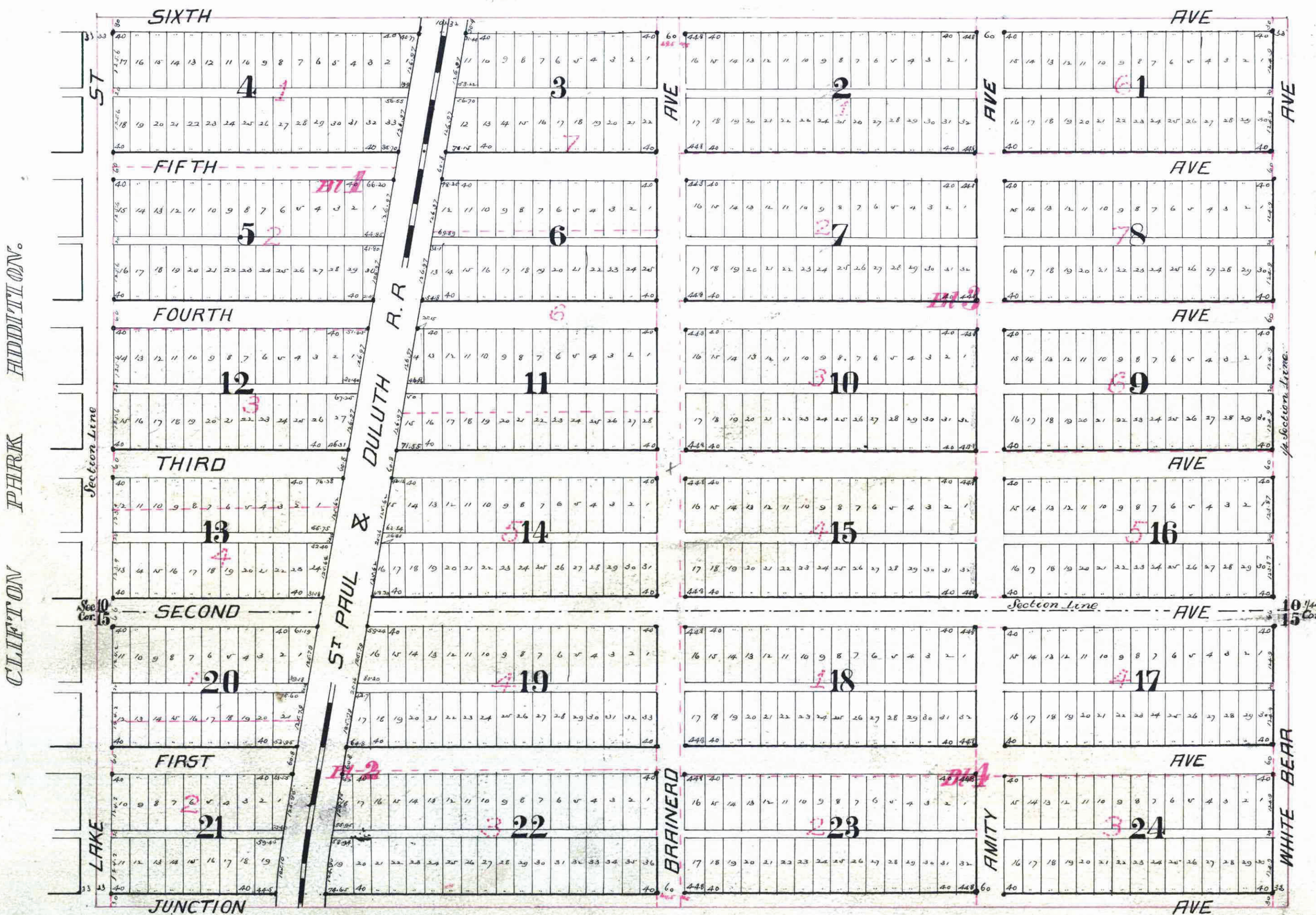
SABIN ADDITION

TO GLADSTONE.

RAMSEY CO. MINN.

Scale 200 ft = 1 in. • - Iron Monuments.

Elmer & Morrison surveyors.



This plat document is an UNOFFICIAL copy of a Subdivision Plat or Registered Land Survey and is made available for information purposes only.

To obtain an official copy please contact the Ramsey County Recorder's Office.

STATE OF MINNESOTA, ss.
County of Ramsey.

Office of the Register of Deeds.

This is to certify that the within instrument was filed for Record in this Office, at St. Paul, on the 27th day of August, A. D. 1887, at 10 o'clock P. M., and that the same was duly recorded in Book 9... of Town Plat.

By: [Signature]

We hereby certify to having surveyed and platted the property as described on this map as "Sabin Addition to Gladstone" and have placed iron monuments at the corners of each and every block as shown on this map and the same is correct.

Elmer & Morrison
Surveyors

State of Minnesota }
County of Ramsey }
On this 24th day of August, 1887, personally appeared before the undersigned, John W. Morrison, to me well known to be a member of the firm of "Elmer & Morrison" and acknowledged that he executed the foregoing Certificate as the free act and deed of said "Elmer & Morrison".

Arthur J. Nettleton
Notary Public
Ramsey, Minn.

Accepted and approved this 24th day of August, 1887.

J. B. Johnson
Notary Public
St. Paul, Minn.

Plat Commissioners

This is to certify that John A. Sabin & Annie Sabin his wife, Mary O'Cray & William H. O'Cray, her husband, Grace W. Fairchild (nee Sabin) & Charles C. Fairchild, her husband, owners of Blocks One, Two, Three & Four (1, 2, 3 & 4) Sabin Garden Lots in Section Ten & Eleven (10 & 11) T. 29. R. 22 have caused the same to be surveyed and platted, and hereby dedicate to the public, and for the public use forever, all the streets, avenues & alleys as herein indicated.

Witness our hands and seals this 27th day of August, 1887.

In presence of
A. J. Walsh
Charles J. Smith

John A. Sabin
Annie Sabin
Mary O'Cray
William H. O'Cray

Grace W. Fairchild
Charles C. Fairchild

State of Minnesota }
County of Ramsey }
On this 27th day of August, 1887, personally came before me the undersigned John A. Sabin & Annie Sabin his wife, Mary O'Cray & William H. O'Cray her husband, Grace W. Fairchild & Charles C. Fairchild her husband to me well known and they acknowledged that they executed the foregoing Certificate for the uses and purposes therein expressed as their own free act and deed.

Taxes Paid and Transfer Entered
AUG 29 1887
M. F. KAIN, County Auditor.
Per E. R. Harroun

OFFICE OF COUNTY TREASURER,
St. Paul, Minn.
AUG 27 1887
1888 TAX PAID.
F. A. BENZ Co. Treas.