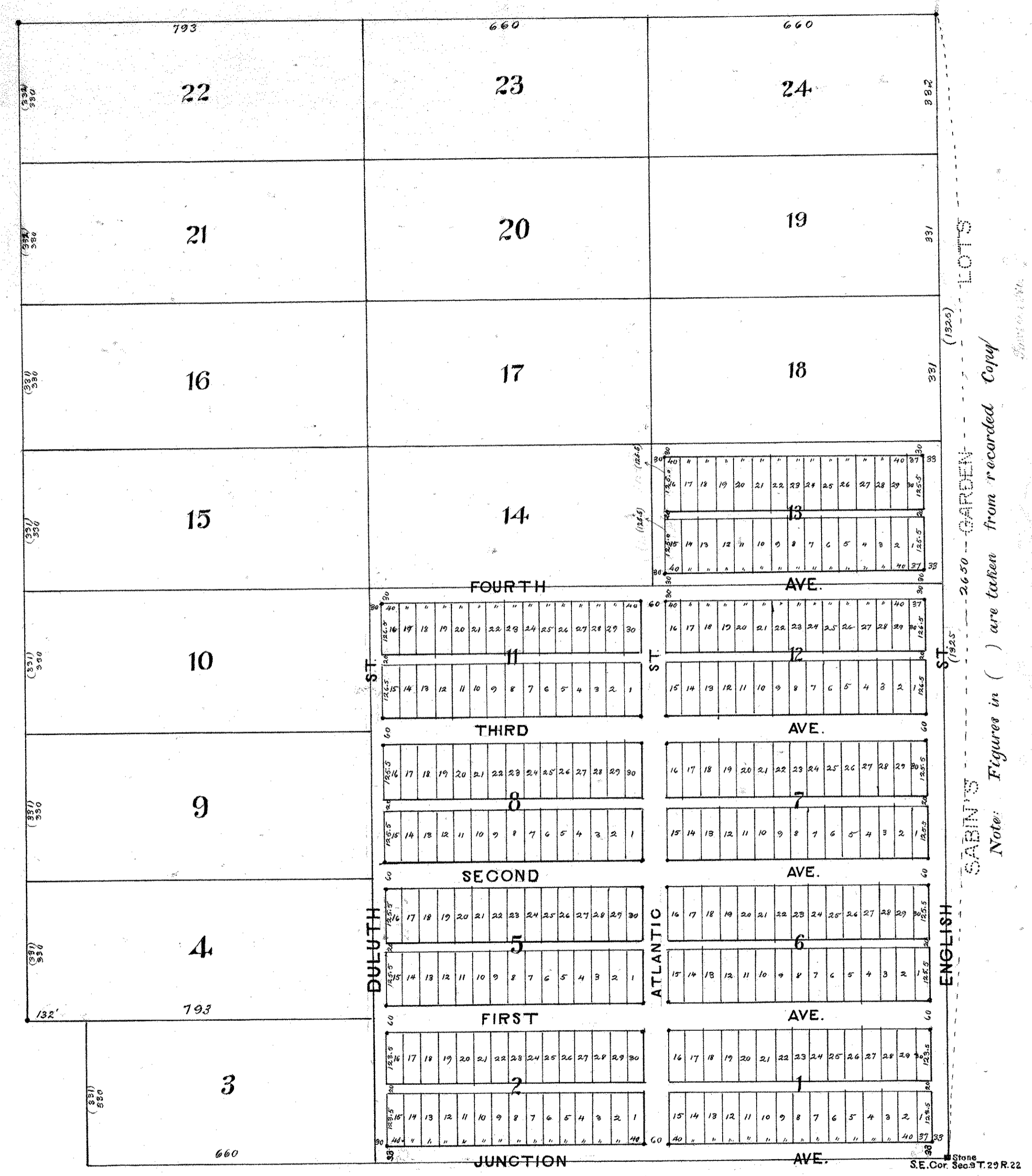


CLIFTON ADD.

. indicates iron monuments

Chas. A. Forbes, Surveyors 1887



Notes: Figures in () are taken from recorded Copy

Chas. A. Forbes 1887

Description:

Commencing at the S.E. Cor. Sec. 9 T. 29 R. 22 - thence ^{West} along S. line of said Sec. 9 - 30 ch. thence N. 5 ch. thence W. 2 ch. - thence parallel with E. line of said Sec. 9 33 ch. to intersection with N. line of said S.E. 1/4 of Sec. 9 - thence E. along said 1/4 Sec. line 32 ch. to E. line of Sec. thence along said E. line 40 ch. to place of beginning