

# CLARKE'S

3rd. Addition  
To The  
CITY OF ST. PAUL  
Ramsey Co., Minn.

Scale: lin. = 50 feet.

This plat document is an UNOFFICIAL copy of a Subdivision Plat or Registered Land Survey and is made available for information purposes only.  
To obtain an official copy please contact the Ramsey County Recorder's Office.

STATE OF MINNESOTA  
County of Ramsey  
Office of the Register of Deeds.  
This is to certify that the within instrument was filed for Record in this Office, at St. Paul, on the ... day of ... A. D. 1888, at ... o'clock ... M., and that the same was duly recorded in Book ... of ...  
By ...  
Register of Deeds.

HAWLEY & NEWELL,  
Civil Engineers

Rondo St.

Wm Bickels Sub.

We, the undersigned, owners of the following described property, to wit: The middle one-third (1/3) of Lot nine (9) of "Smith and Lotts Outlots to Saint Paul" and Lots numbered Eleven (11) and Twelve (12) of "Marian's Re-arrangement of the East One-third (1/3) of Lot nine (9) of Smith and Lotts Outlots to Saint Paul", according to the recorded plats thereof on file in the office of the Register of Deeds for Ramsey County, Minnesota, have caused the same to be surveyed and platted into streets, blocks, and lots as this map shows to be named and hereafter known as "Clarke's 3rd. Addition to the City of St. Paul Ramsey Co., Minn.;" and we do hereby give and dedicate to the public and for the public use forever all the streets shown hereon running through said property. Witness our hands and seals this 20th day of November A. D. 1888.

In presence of  
A. B. McQuinn }  
Frank B. Clarke (Seal)  
Lena B. Clarke (Seal)

County of Ramsey } s. s.  
State of Minnesota }

On this 20th day of November A. D. 1888, before me a Notary Public, personally appeared Frank B. Clarke & Lena B. Clarke (his wife) to me well known to be the identical persons who executed the foregoing certificate; and, they acknowledged having executed the same as their own free act and deed.

Witness my hand and Official seal.  
A. B. McQuinn  
Notary Public,  
Ramsey Co., Minn.

We hereby certify to having surveyed and platted the property described on this map and have placed an iron monument (M) at the corners of the blocks and that the same is correct

Hawley & Newell  
Civil Engineers

County of Ramsey } s. s.  
State of Minnesota }

On this 20th day of November A. D. 1888, before me a Notary Public, personally appeared A. H. Maxwell of the firm of Hawley and Maxwell, to me well known, and he acknowledged having executed the above certificate as his own free act and deed and as the free act and deed of said firm. Witness my hand and Notarial Seal.

A. H. Maxwell  
Notary Public,  
Ramsey Co., Minn.

CITY TREASURER'S OFFICE  
ST. PAUL, MINN.  
DEC 22 1888  
ASSESSMENTS PAID  
Hawley  
CITY TREAS.

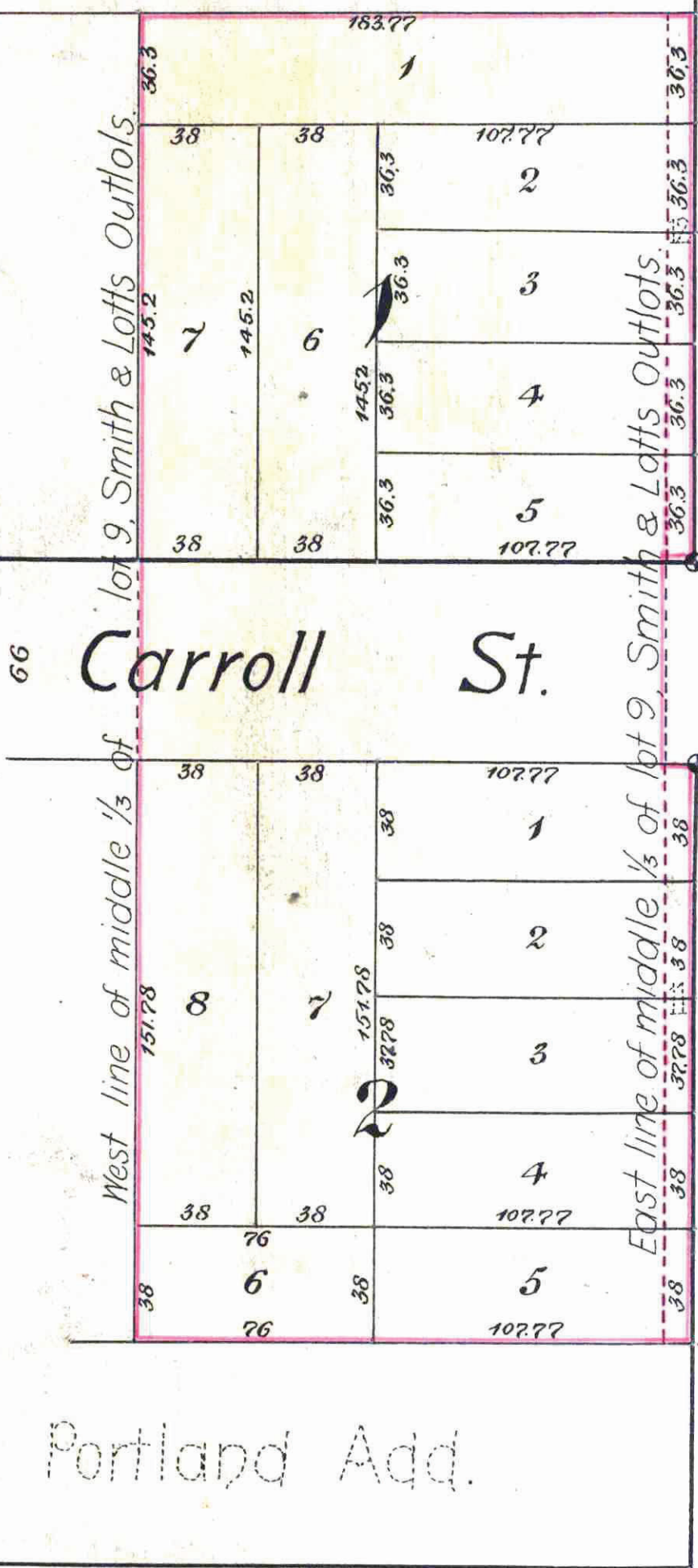
Office of County Treasurer  
ST. PAUL, MINN.  
JAN 31 1889  
1888 TAX PAID.  
A. M. NELSON, County Treasurer

Taxes Paid and Transfer Entered  
JAN 31 1889  
M. F. KAIN, County Auditor.  
Per E. R. Harpous  
Deputy

Carroll St.

Portland Add.

Iglehart St.



Accepted and approved this 15th day of December A. D. 1888  
J. F. Johnson }  
A. B. McQuinn } Plat Commission  
L. W. ... }

I hereby recommend the acceptance of the within plat by the Common Council  
City Engineer

Taxes paid  
County Auditor,  
Ramsey Co., Minn.

Assessments  
City Treasurer,  
St. Paul.

Accepted and approved by the Common Council of the City of St. Paul on the 1st day of Dec. A. D. 1888.  
L. A. ...  
City Clerk  
R. J. ...  
Deputy