

STATE OF MINNESOTA, ss.
 County of Ramsey,
 OFFICE OF THE REGISTER OF DEEDS.
 This is to certify that the within instrument was filed for Record in this office, at St. Paul, on the 21st day of August A. D. 1885 at 12 o'clock P. M., and that the same was duly recorded in Book Y of Plats pages 12.

R. C. Wiley
 Register of Deeds.
 By *J. J. Buckhout*
 Deputy.

This plat document is an UNOFFICIAL copy of a Subdivision Plat or Registered Land Survey and is made available for information purposes only.

To obtain an official copy please contact the Ramsey County Recorder's Office.

WOOD LAWN PARK ADDITION

ST. PAUL MINN.

We hereby certify to having surveyed and platted the property as described on this map as Wood Lawn Park Addition to St. Paul Minnesota and have placed iron monuments at the block corners as shown on this plat and the same is correct.

Binckerhoff + Phillips
 Surveyors.

State of Minnesota }
 County of Ramsey } On this 21st day of August A. D. 1885,
 personally appeared before me *Binckerhoff + Phillips* to me well known, and acknowledged that they executed the foregoing certificate as their free act and deed.

J. J. Buckhout
 Notary Public
 Ramsey County Minn.

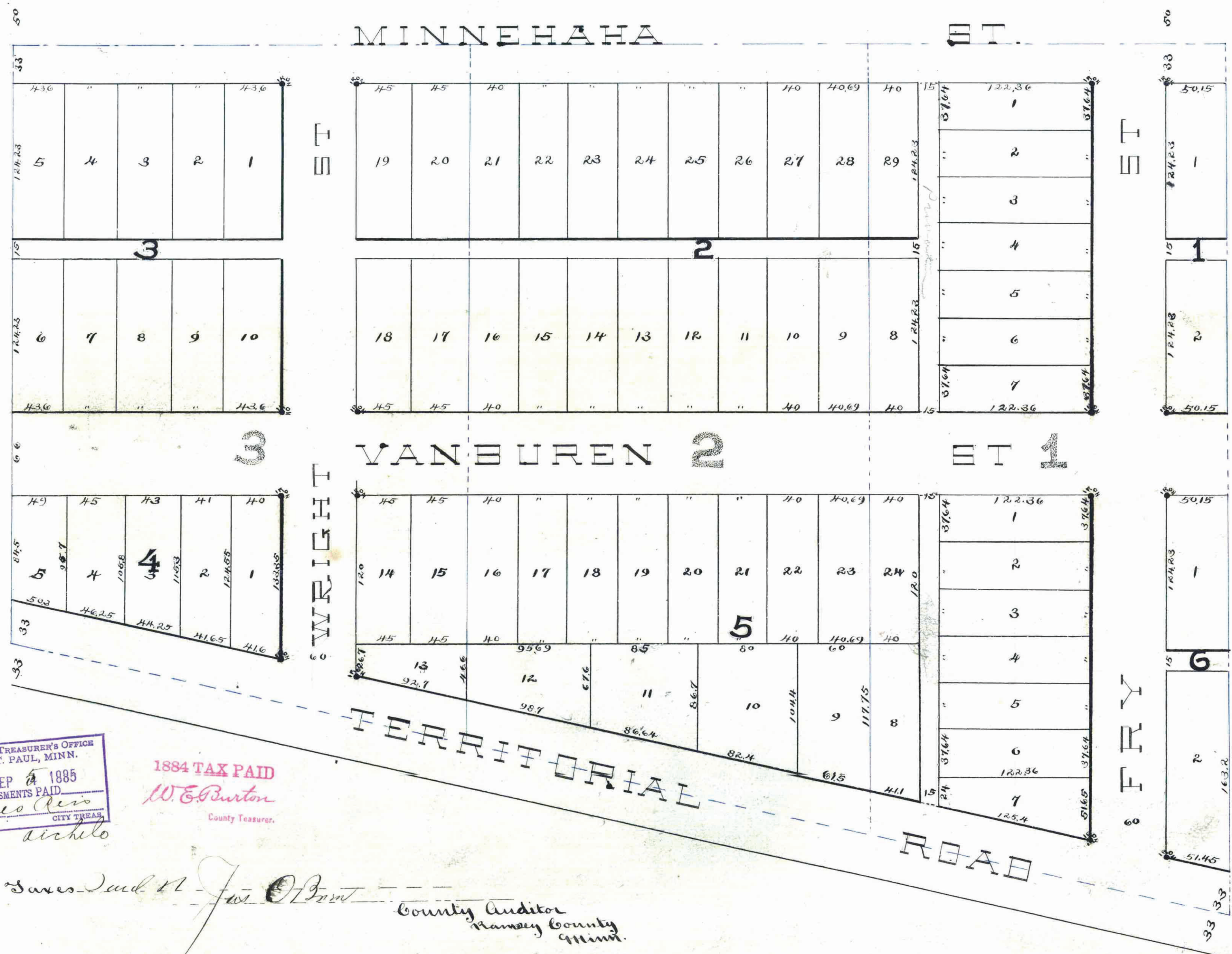
COLLEGE

PLACE WEST

MINNEHAHA ST.

VANBUREN 2 ST 1

TERRITORIAL ROAD



This is to certify that *E. C. Long - Mary A. Long - Geo. C. Power - Edna A. Power - Alfred M. Stowe* proprietors of Lots 1, 2 + 3, Minneha Out lots have caused the same to be surveyed and platted and here-after known as Wood Lawn Park Addition to St. Paul Minnesota as shown by this plat and hereby dedicate to the public and for the public use forever all the streets and alley as are hereon indicated. Witness our hands and seals this 21st day of August A. D. 1885.

In presence of
E. Darnel
J. J. Buckhout

E. C. Long Seal
Mary A. Long Seal
Geo. C. Power Seal
Edna A. Power Seal
Alfred M. Stowe Seal
Harriet P. Stowe Seal

State of Minnesota }
 County of Ramsey } On this 21st day of August A. D. 1885,
 Personally came before me the undersigned *E. C. Long* and *Mary A. Long* his wife, and *Geo. C. Power* and *Edna A. Power* his wife to me well known, and who acknowledged that they executed the foregoing certificate for the use and purposes therein expressed.

J. J. Buckhout
 Notary Public
 Ramsey County Minnesota.

State of New York }
 County of Ontario } On this 13th day of August A. D. 1885,
 personally came before me the undersigned *Alfred M. Stowe* and *Harriet P. Stowe* his wife to me well known, and who acknowledged that they executed the foregoing certificate for the use and purposes therein expressed.

Walter H. Knapp
 Notary Public
 Ontario County New York.

Accepted and approved this 31st day of August A. D. 1885.

S. P. Holston
James Starkey } Plat Commissioners

I recommend the acceptance of the within plat by the common council

L. W. Remondet
 City Engineer.

Accepted by the Common Council of the City of St. Paul on the day of *September* 1885.

W. H. McCarty
 City Clerk

Assessments

City Treasurer
 St. Paul.

CITY TREASURER'S OFFICE
 ST. PAUL, MINN.
 SEP 2 1885
 ASSESSMENTS PAID
W. E. Burston
 CITY TREAS.

1884 TAX PAID
W. E. Burston
 County Treasurer.

Sures Paid *17* *Jos. O. P. W.*
 County Auditor
 Ramsey County Minn.