

WETZEL'S  
SUBDIVISION OF LOT 4, BLOCK 2,  
OF  
COLLEGE PLACE EAST DIVISION  
ADDITION TO ST. PAUL.

SCALE: 30 FEET = 1 INCH.

I hereby certify to having surveyed and platted the property described on this map as Lot 4, Block 2, of College Place East Division, Addition to St. Paul, and have placed iron monuments as shown on this map, and the same is correct.

*John B. Fish* Surveyor.

State of Minnesota, }  
County of Ramsey, } On this 25<sup>th</sup> day of May A.D. 1888, personally appeared before me John B. Fish, to me well known, and acknowledged that he executed the foregoing certificate as his own free act and deed.  
Edmund R. L. Hamilton, Jr.  
Notary Public,  
Ramsey Co., Minn.

This is to certify that *Emil Metzger and his wife Joraida Metzger* proprietor of Lot 4, Block 2, of College Place East Division, Addition to St. Paul, have caused the same to be surveyed and platted, and hereafter known as, *Wetzel's Subdivision of Lot 4, Block 2, of College Place East Division, Addition to St. Paul,* as shown by this plat, and hereby dedicate to the public for public use forever all the streets, avenues, and alleys herein indicated.

Witness our hands and seals this 26<sup>th</sup> day of May A.D. 1888.

In presence of  
*Q. M. Washburn* }  
*Charles Bradford* } *Emil Metzger* Seal  
*Joraida Metzger* Seal

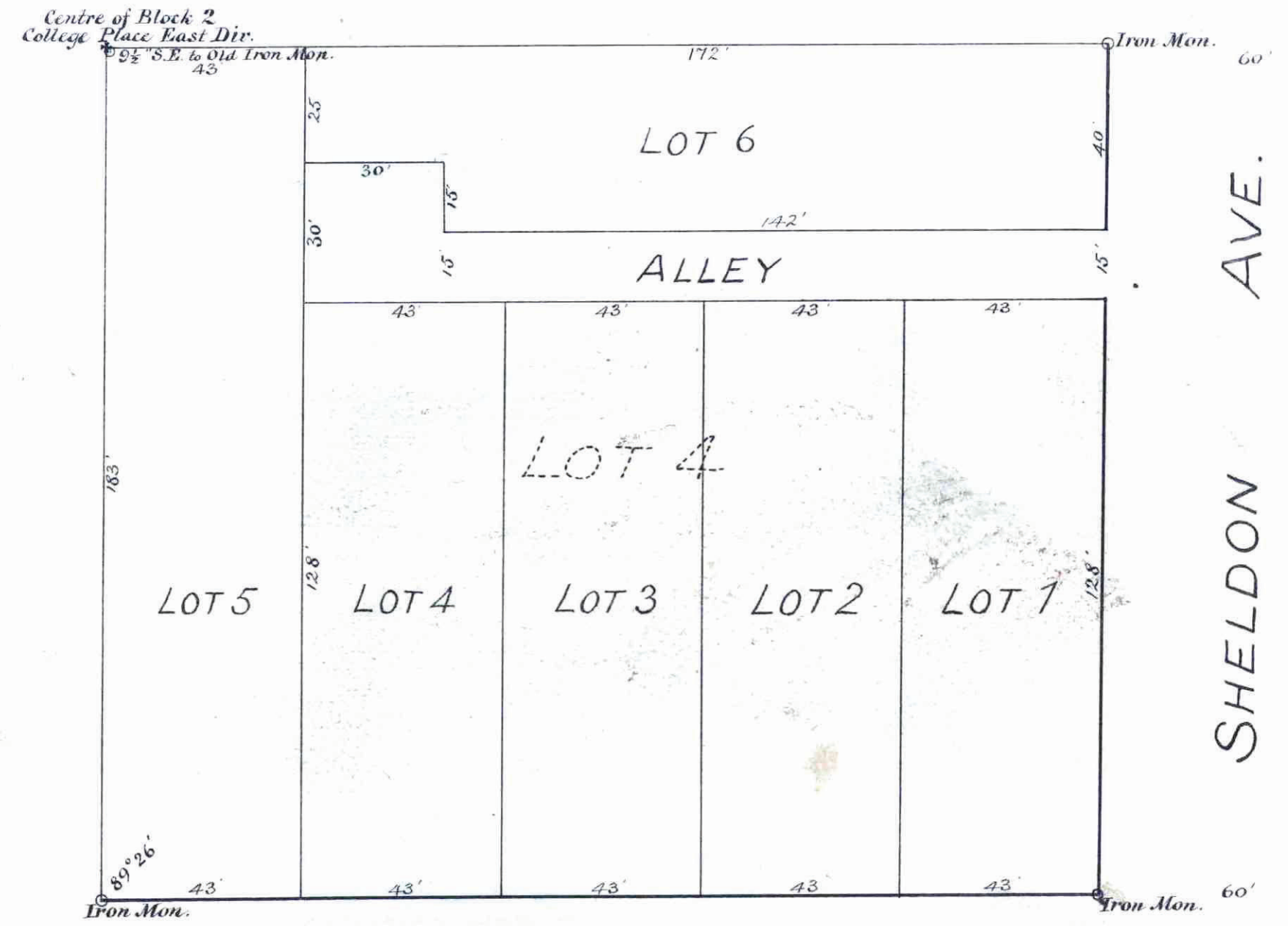
State of Minnesota, }  
County of WRIGHT, } On this 26<sup>th</sup> day of May A.D. 1888, personally came before me *Emil Metzger and his wife Joraida Metzger* to me well known, and acknowledged that they executed the foregoing certificate as their own free act and deed.

*Charles Bradford*  
Notary Public,  
WRIGHT Co., Minn.

Accepted and approved this 28<sup>th</sup> day of May A.D. 1888.

*L. P. Polron* } Plat Commissioners.  
*J. A. Stanley* }  
*L. M. Rundlett* City Engineer

Accepted by the common council of the city of St. Paul, on the 18<sup>th</sup> day of May 1888.  
*Maria Prendergast*  
City Clerk.



Taxes Paid and Transfer Entered  
JUNE 4 1888  
M. F. N. S. L. N. County Auditor  
Per *M. S. Enrie*

CITY TREASURER'S OFFICE  
ST. PAUL, MINN.  
MAY 28 1888  
ASSESSMENTS PAID  
*John B. Fish*  
CITY TREAS.

OFFICE OF  
COUNTY TREASURER  
ST. PAUL, MINN.  
JUN 4 1888  
1887 TAX PAID  
F. A. HENZ, Co. Treas.

This plat document is an UNOFFICIAL copy of a Subdivision Plat or Registered Land Survey and is made available for information purposes only.  
To obtain an official copy please contact the Ramsey County Recorder's Office.

STATE OF MINNESOTA, ss.  
County of Ramsey.  
Office of the Register of Deeds.  
This is to certify that the within instrument was filed for Record in this Office, at St. Paul, on the 2<sup>nd</sup> day of May A. D. 1888, at 10 o'clock A. M., and that the same was duly recorded in Book 2 of page 124.  
By *[Signature]* Register of Deeds.

