

24

DANA AND HUME'S SUBDIVISION OF THE WEST HALF OF BLOCK 98 LYMAN DAYTON'S ADD. TO ST. PAUL

SCALE - 50 FEET TO 1 INCH

Surveyed Nov. 1886 By Louis DeW. Washburn C.E.

This is to certify that William A. Dana and Seward L. Hume, proprietors of the West Half of Block 98 of Lyman Dayton's Addition to Saint Paul, have caused the same to be surveyed and platted, and hereafter known as Dana and Hume's Subdivision of the West Half of Block 98 Lyman Dayton's Add. to St. Paul, and hereby dedicate to the public and for the public use forever the alleys, as herein indicated.

Witness our hands and seals this 16th day of February 1888.
In presence of { A. A. Doolittle
J. W. Crosson } William A. Dana (Seal)
Seward L. Hume (Seal)

State of Minnesota }
County of Ramsey } On this 16th day of February A.D. 1888, personally came before me the undersigned, William A. Dana and Seward L. Hume, to me well known, and they acknowledged that they executed the foregoing certificate for the use and purpose therein expressed.

A. A. Doolittle
Notary Public
Ramsey County Minnesota

I hereby certify to having surveyed and platted the property as described on this map as Dana and Hume's Subdivision of Block 98 Lyman Dayton's Add. to St. Paul and have placed iron monuments at each block corner, as shown by this plat, and the same is correct.
Louis DeW. Washburn
Civil Engineer

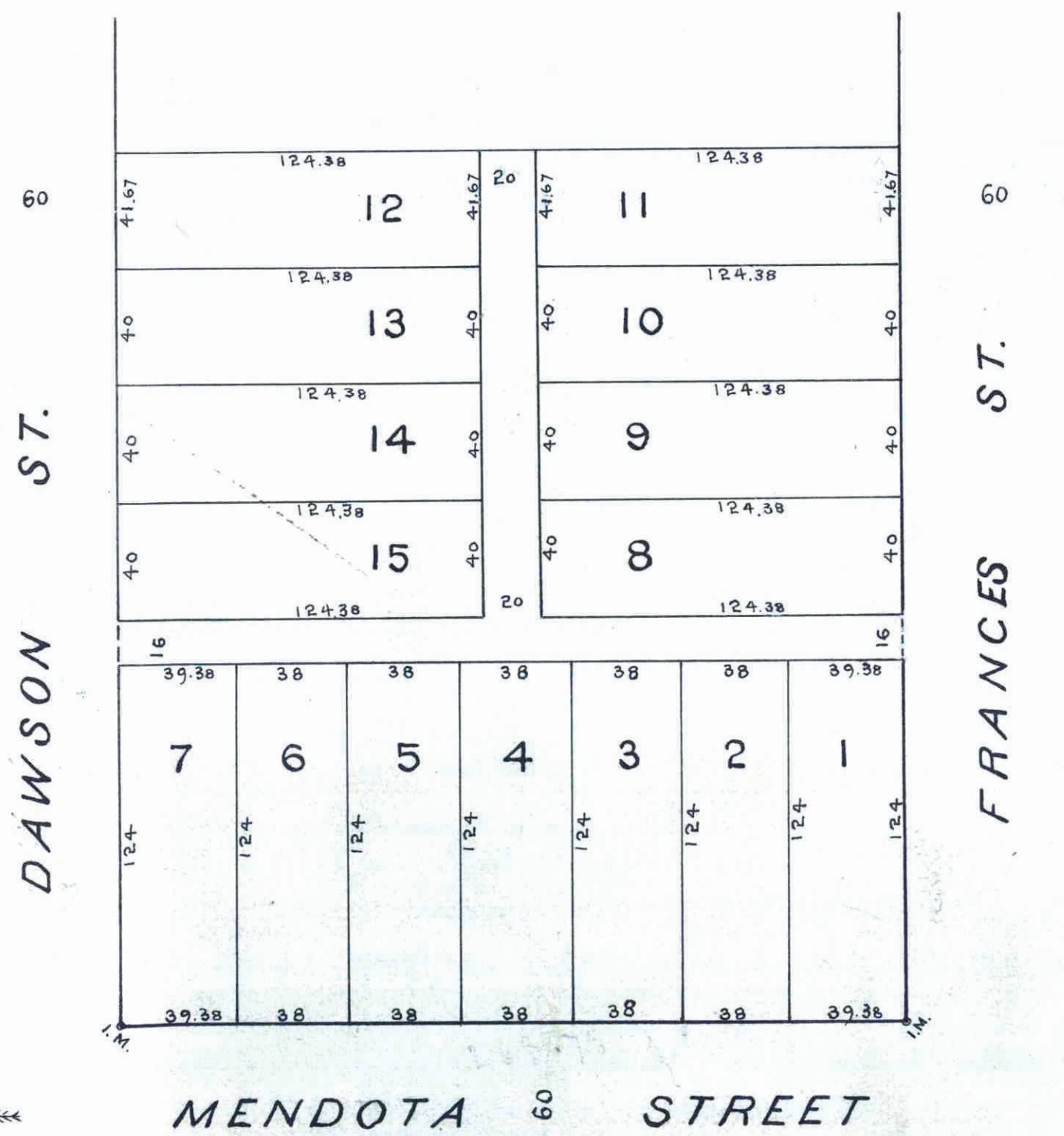
State of Minnesota }
County of Hennepin } On this Eighth day of Nov. A.D. 1886, personally came before me the undersigned, Louis DeW. Washburn, to me well known, and he acknowledged that he executed the foregoing certificate as his own free act and deed.

John W. Bestline
Notary Public
Hennepin County Minnesota

Accepted and approved this 16th day of February A.D. 1888
J. P. Folsom
J. W. Starkey } Plat Commissioners
R. W. Ruedden

I hereby recommend the acceptance of the within plat by the common council.
City Engineer

Accepted by the common council of the city of St. Paul on the 6th day of March A.D. 1888
Mrs. A. Bendeigast
City Clerk



This plat document is an UNOFFICIAL copy of a Subdivision Plat or Registered Land Survey and is made available for information purposes only.
To obtain an official copy please contact the Ramsey County Recorder's Office.

STATE OF MINNESOTA, ss.
County of Ramsey, ss.
Office of the Registrar of Deeds.
This is to certify that the within instrument was filed for Record in this Office, at St. Paul, on the ... day of ... A. D. 1888 at ... o'clock ... M., and that the same was duly recorded in Book ... of ... page ...
By: [Signature]
Registrar of Deeds

Texas Paid and Francis Equal
MAR 12 1888
M.F. K.A.B. Clerk
Per [Signature]

CITY TREASURER'S OFFICE
ST. PAUL, MINN.
FEB 18 1888
ASSESSMENTS PAID
[Signature]
CITY TREAS.

OFFICE OF COUNTY TREASURER,
ST. PAUL, MINN.
FEB 27 1888
1887 TAX PAID.
F. A. HENZ, Co. Treas.
[Signature]