

I certify to having surveyed and plotted the property described on this map as Clarke and Wilgus Addition to Saint Paul Minnesota and have placed iron monuments at the corners of each and every block as shown on this map and the same is correct.

J. B. Hawley
Surveyor

County of Ramsey }
State of Minnesota }

August 1st 1883.

Personally appeared before me Frank B. Clarke and Lena B. Clarke his wife and Augustus B. Wilgus and Elizabeth S. Wilgus his wife to me known to be the identical persons who, the accompanying certificate and acknowledged the same to be their free act and deed.

Edmund P. Wilgus
Notary Public
Ramsey, Co.

Lena B. Clarke his wife and Augustus B. Wilgus and Elizabeth S. Wilgus his wife the undersigned owners of Lots 7-8-9 in subdivision of the East 1/2 of the South West 1/4 of Section 20 Township 29 Range 22 West of the 1st P.M. by order of the District Court of Ramsey County. Do hereby certify to having caused the same to be surveyed and plotted as Clarke and Wilgus Addition to Saint Paul Minnesota and do hereby dedicate to the public and for the public use forever the Streets as on this plat or map laid out and designated. In witness whereof we have placed our hands and seals this 1st day of August 1883.

In the presence of
E. P. Wilgus
J. J. Pond

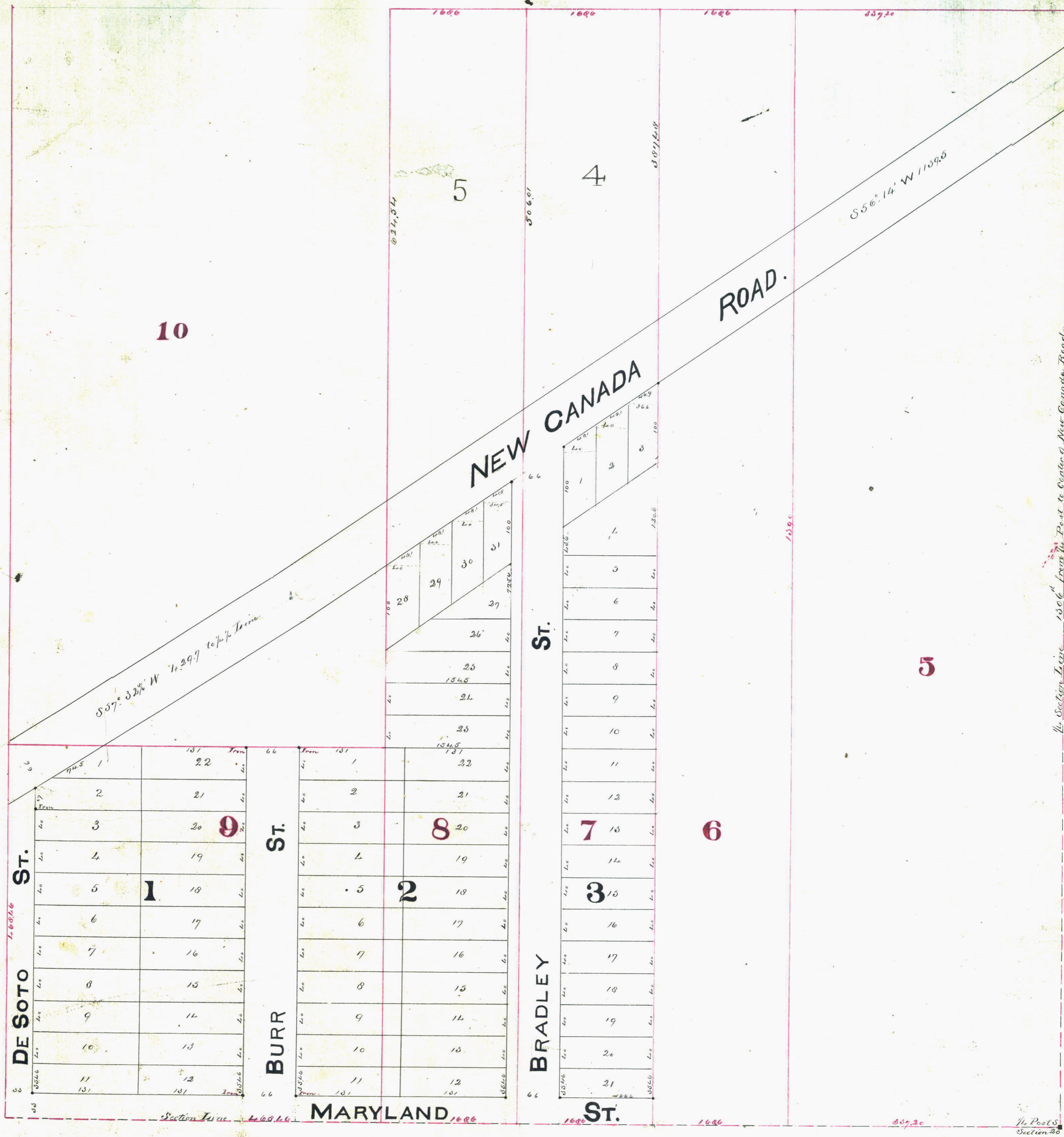
Frank B. Clarke
Lena B. Clarke
Augustus B. Wilgus
Elizabeth S. Wilgus

Approved this 14th day of Sept 1883

J. J. Johnson
Geo. Starkey
A. H. Hauley
Plat Commissioner

CLARKE & WILGUS' ADDITION

Taxes paid Transferred
Sep 6th 1883
J. McCleary
County Auditor



Lines in red indicate lots in subdivision of East 1/2 of S 1/4 Section 20 by order of the District Court of Ramsey Co. as shown in Book 17 of Deeds. Figures in red the number and dimension.

STATE OF MINNESOTA
County of Ramsey, Minn.
OFFICE OF THE REGISTER OF DEEDS.
This is to certify that the within instrument was filed for record in this office, at St. Paul, on the 6th day of Sept. A. D. 1883 at 3^o clock P. M., and that the same was duly recorded in Book 25 of Deeds.
By _____
Register of Deeds.
Deputy.

This plat document is an UNOFFICIAL copy of a Subdivision Plat or Registered Land Survey and is made available for information purposes only.
To obtain an official copy please contact the Ramsey County Recorder's Office.

98