

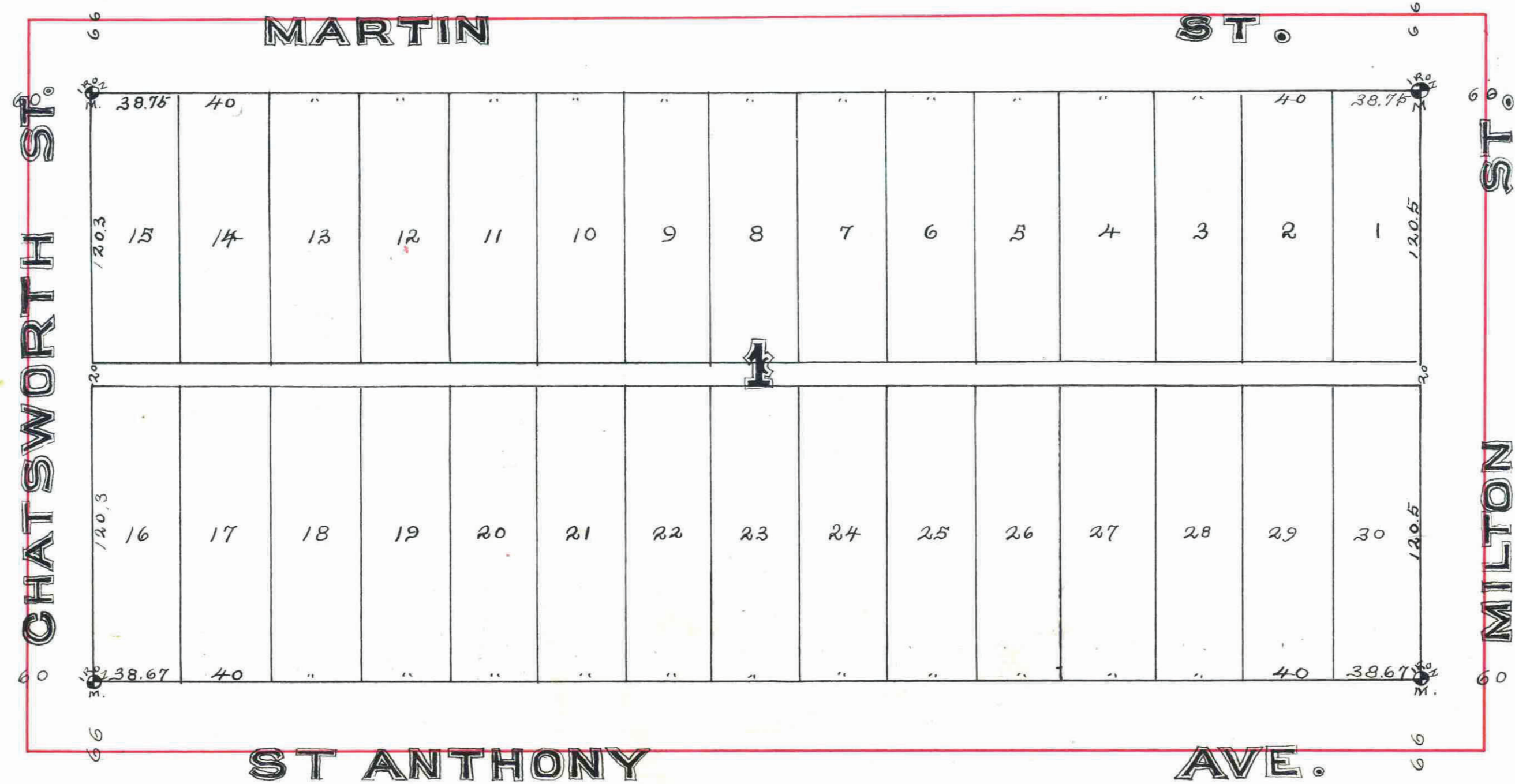
# WAGNER AND GASSER'S

ADDITION  
TO  
ST. PAUL  
MINNESOTA.

This plat document is an UNOFFICIAL copy of a Subdivision Plat or Registered Land Survey and is made available for information purposes only.

To obtain an official copy please contact the Ramsey County Recorder's Office.

31



STATE OF MINNESOTA  
County of Ramsey  
I, the undersigned, Clerk of the Board of Assessors, do hereby certify that the within plat is a true and correct copy of the original as recorded in my office on the 26th day of July, 1887, and that the same conforms to the original as recorded in my office on the 26th day of July, 1887.

CITY TREASURER'S OFFICE  
ST. PAUL, MINN.  
JUL 25 1887  
PAID

CITY TREASURER'S OFFICE  
ST. PAUL, MINN.  
JUL 25 1887  
ASSESSMENTS PAID  
George Ross  
CITY TREAS.

I hereby certify to having surveyed and platted the property as described on this map as WAGNER and GASSER'S addition to St. Paul, Minnesota, and have placed iron monuments at the corners of each and every block as shown on this map and the same is correct

H. L. Phillips  
Surveyor

State of Minnesota }  
County of Ramsey }

On this 15<sup>th</sup> day of July A.D. 1887, personally came before me, the undersigned Matthew M. Gasser to me well known and who acknowledged that he executed the foregoing certificate for the uses and purposes therein expressed.

Mane M. Metcalf

Notary Public

Accepted and approved this 18<sup>th</sup> day of July A.D. 1887

Wm. H. Kain  
John Starkey  
Wm. H. Kain } Plat Commission

Accepted by the common council of the City of St. Paul on the 27<sup>th</sup> day of July 1887

George Ross  
Deputy City Clerk

Taxes paid July 26/1887 Wm. H. Kain

County Auditor  
Ramsey Co. Minn.  
Per H. Kain

State of Minnesota }  
County of Ramsey }

On this 15<sup>th</sup> day of July A.D. 1887, personally appeared before the undersigned H. L. Phillips to me well known, and acknowledged that he executed the foregoing certificate as his own free act and deed.

Mane M. Metcalf  
Notary Public

This is to certify that Matthew M. Gasser, unmarried, proprietor of South one half (S 1/2) of Southwest one quarter (SW 1/4) of North-east one quarter (NE 1/4) of Southwest one quarter (SW 1/4) of Section 35 Township 29 North, Range 23 West of the 4<sup>th</sup> Principal Meridian has caused the same to be surveyed and platted, and hereafter known as Wagner and Gasser's addition to St. Paul, Minnesota as shown by this plat and hereby dedicates to the public, and for the public use forever, all the streets, avenues and alleys, as herein indicated.

Witness our hands and seals this 15<sup>th</sup> day of July, 1887

Matthew M. Gasser Seal

In presence of  
A. L. May  
Mane M. Metcalf

OFFICE OF  
COUNTY TREASURER,  
ST. PAUL, MINN.  
JUL 15 1887  
1886 TAX PAID.  
F. A. RENZ, Co. Treas.