

STATE OF MINNESOTA, ss.  
 County of Ramsey,  
 OFFICE OF THE REGISTER OF DEEDS.  
 This is to certify that the within instrument was filed for Record in this office, at St. Paul, on the 31<sup>st</sup> day of March, A. D. 1885 at 5 o'clock P. M., and that the same was duly recorded in Book W of Plate pages 31  
 R. Wiley Register of Deeds.  
 By \_\_\_\_\_ Deputy.

This plat document is an UNOFFICIAL copy of a Subdivision Plat or Registered Land Survey and is made available for information purposes only.  
 To obtain an official copy please contact the Ramsey County Recorder's Office.

# CHUTE BROTHERS DIVISION NO. 9 ADDITION

TO THE CITY OF ST. PAUL

Scale: 1 in. = 50 ft.

Indicates Iron Monument.

Section line

I hereby certify to having surveyed and platted the property as described on this map as "Chute Brothers Division No. 9 Addition" to the City of St. Paul, Minnesota, and have placed iron monuments at the corners of the blocks, as hereon on this map shown, and the same is correct.  
 J. P. A. Howe  
 Surveyor

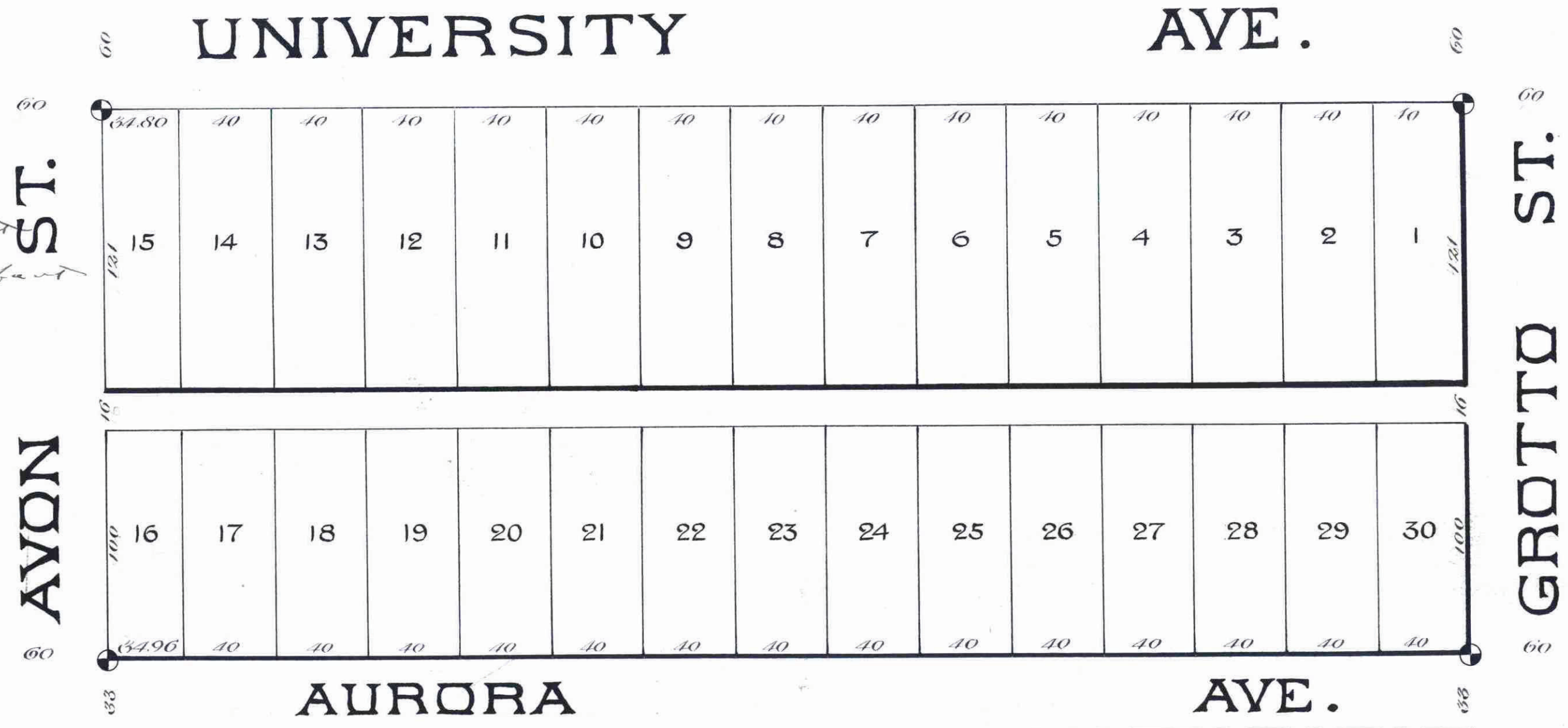
We, Richard Chute and Mary E. Chute his wife by Samuel H. Chute, their Attorney in fact and Samuel H. Chute and Helen E. H. Chute his wife all of the City of Minneapolis, County of Hennepin, the undersigned owners of the East half (1/2) of the West half (1/2) of the North half (1/2) of the North half (1/2) of the Southeast quarter (1/4) of Section thirty five (35) Township twenty nine (29), Range twenty three (23) West, do hereby certify to having caused the same to be surveyed and platted as "Chute Brothers Division No. 9 Addition" to the City of St. Paul, Minnesota, as herein and hereon is depicted and we do hereby give and dedicate to the public and for the public use forever all the streets and alleys on this map or plat laid out and designated.

In Witness whereof, we have hereunto set our hands and seals this 13<sup>th</sup> day of March, A.D. 1885  
 In presence of  
 Richard Chute (Seal)  
 Samuel H. Chute his attorney in fact (Seal)  
 Mary E. Chute  
 Samuel H. Chute his attorney in fact (Seal)  
 Samuel H. Chute (Seal)  
 Helen E. A. Chute (Seal)

County of Hennepin } ss.  
 State of Minnesota

Be it known on the 13<sup>th</sup> day of March, A.D. 1885, personally appeared before me Samuel H. Chute and Helen E. H. Chute, his wife, to me personally known to be the same persons described in and who executed the foregoing instrument; and they acknowledged that they executed the same as their free act and deed; and, also, at the same time appeared before me Samuel H. Chute as the Attorney in fact of Richard Chute and Mary E. Chute his wife to me known to be the persons described herein and he acknowledged that he executed this instrument in behalf of the said Richard Chute and Mary E. Chute and as their free act and deed

Chas. R. Lehute  
 Notary Public  
 Hennepin County  
 Minn.



City Engineers Office  
 March 17<sup>th</sup> 1885.  
 I have examined this plat and recommend that it be approved and accepted by the Common Council of St. Paul  
 L. W. Remondet  
 City Engineer

St. Paul March 20 1885  
 I certify that "Chute Brothers Division No. 9 Addition" to the City of St. Paul, Minnesota, as exhibited on this plat was accepted by the Common Council on the 17<sup>th</sup> day of March, A.D. 1885 as an addition to this City  
 J. P. A. Howe  
 City Clerk,  
 St. Paul, Minnesota

Auditors Office  
 Ramsey County, Minnesota  
 I have paid out transferred March 20<sup>th</sup> 1885  
 J. P. A. Howe  
 County Auditor

City Treasurer's Office  
 St. Paul, Minn., 1885  
 Assessments for local improvements paid  
 J. P. A. Howe  
 City Treasurer

St. Paul March 14 1885  
 Examined and Approved  
 J. P. Folsom  
 J. S. Starkey  
 W. A. Hauke  
 Not Commission

We hereby certify that this plat or map is a true and correct copy of an original plat or map of said "Chute Brothers Division No. 9 Addition" to the City of St. Paul, Minn. resolve this day approved, signed, and accepted by this Commission  
 Dated, St. Paul, March 14 1885  
 J. P. Folsom  
 J. S. Starkey  
 W. A. Hauke  
 Not Commission

CITY TREASURER'S OFFICE  
 ST. PAUL, MINN.  
 MAR 20 1885  
 ASSESSED BY  
 J. P. A. Howe  
 City Treasurer