

25
W 25-60

STATE OF MINNESOTA, ss.
County of Ramsey.
OFFICE OF THE REGISTER OF DEEDS.
This is to certify that the within instrument was filed for Record in this office, at St. Paul, on the 7th day of March, A. D. 1885 at 2:30 o'clock P. M., and that the same was duly recorded in Book W of Plate pages 25.
R. C. Wiley, Register of Deeds.
By _____ Deputy.

CHUTE BROTHERS' DIVISION NO 7

ADDITION TO THE CITY OF ST PAUL MINN.

SCALE : FIFTY FEET TO ONE INCH

This plat document is an UNOFFICIAL copy of a Subdivision Plat or Registered Land Survey and is made available for information purposes only.
To obtain an official copy please contact the Ramsey County Recorder's Office.

They certify to having surveyed and platted the property as described on this map as Chute Brothers' Division No 7 Addition to the city of St Paul, Minn. and have placed iron monuments at the corners of the lots as hereon on this map shown and the same is correct.

J.P. Gatis Johnson
Surveyor.

We, Richard Chute and Mary E. Chute, his wife, by Samuel H. Chute their attorney in fact, and Samuel H. Chute and Helen E. A. Chute, his wife, all of the city of Minneapolis and county of Hennepin, the undersigned owners of the west half of the east half of the north half of the south half of the northeast quarter of Section 35, Township 29, Range 23, do hereby certify to having caused the same to be surveyed and platted as Chute Brothers' Division No 7 Addition to the city of St Paul, Minn. as herein and hereon indicated, and we do hereby give and dedicate to the public and for public use forever all the streets and alley as on this map plat laid out and designated.
In witness whereof we have hereunto set our hands and seals this 25th day of February A.D. 1885.

In presence of
Samuel H. Chute
Richard Chute
Mary E. Chute
by Samuel H. Chute his attorney in fact

Be it known that on this 25th day of Feb. AD 1885 personally appeared before me Samuel H. Chute and Helen E. A. Chute, his wife, to me personally known to be the same persons described in and who executed the foregoing instrument and they acknowledged that they executed the same as their free act and deed, and also at the same time appeared before me Samuel H. Chute as the attorney in fact of Richard Chute and Mary E. Chute his wife to me known to be the persons described herein and he acknowledged that he executed this instrument in behalf of the said Richard Chute and Mary E. Chute and as their free act and deed.

Chute & Chute
Attorneys at Law
St Paul, Minn.

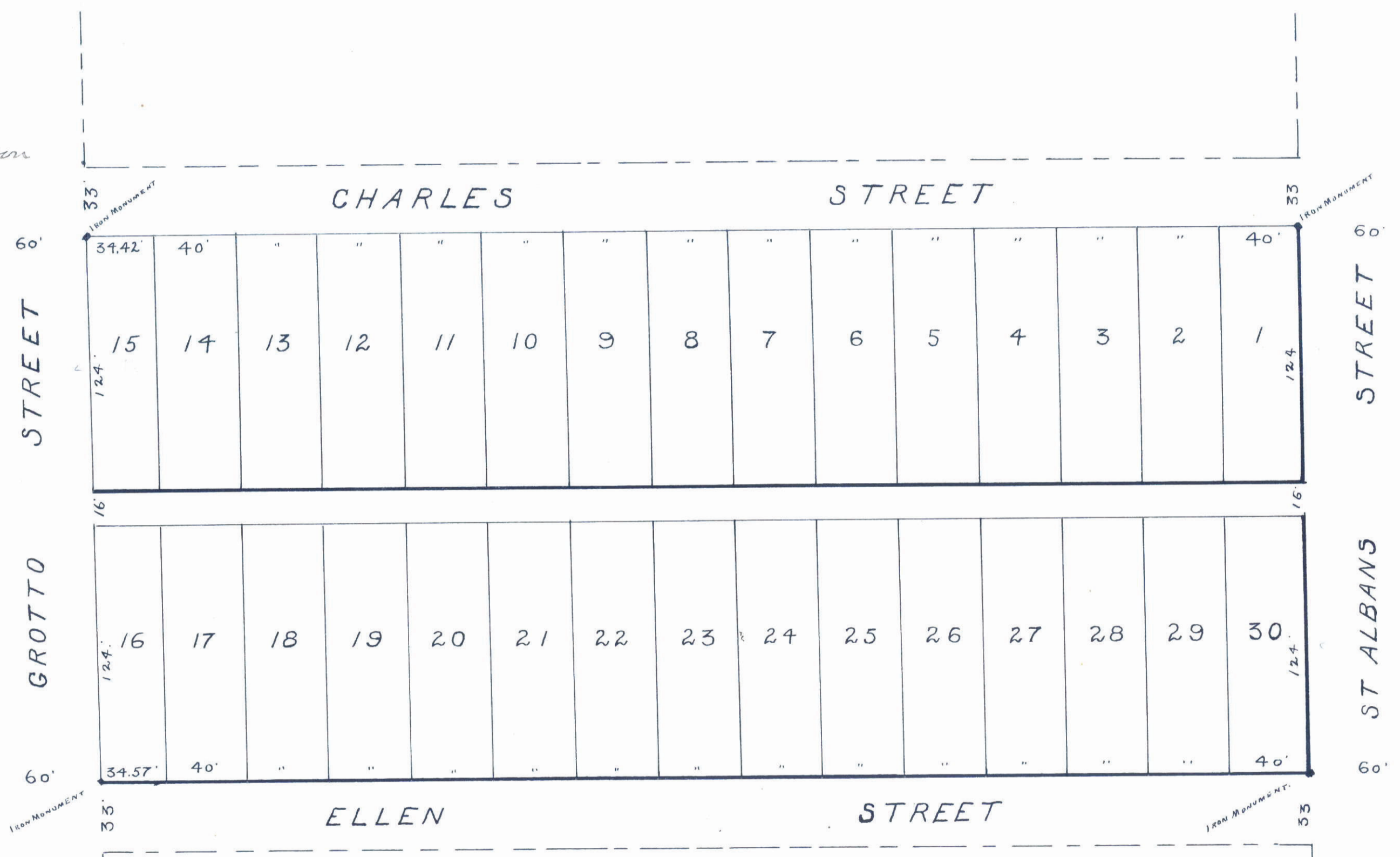
St Paul Feb 28th 1885
Examined and approved
S. S. Holston } Plat Commission.
Jas Starky }

Engineer's Office March 3 1885.
I have examined this plat and recommend that it be approved and accepted by the Common Council of St Paul

J. H. Jensen
City Engineer.
St Paul March 6 1885
I certify that Chute Brothers Division No 7 Addition to the city of St Paul, Minn. as exhibited on this plat was accepted by the Common Council on the 3rd day of March 1885 as an addition to this city.

Wm. J. G. ...
City Clerk, St Paul, Minn.
Auditor's Office, Ramsey County, Minnesota.
Taxes paid and money collected March 7 1885
James D. ...
County Auditor
City Treasurer, St Paul, Minn. 1885.
Assessments for local improvements paid

City Treasurer.



We hereby certify that this plat or map is a true and correct copy of an original plat or map of said Chute Brothers' Division No 7 Addition to the city of St Paul, Minn. this day approved signed and accepted by this Commission. Dated St Paul Feb. 28 1885.

S. S. Holston
Jas Starky } Plat Commission.

CITY TREASURER'S OFFICE
ST. PAUL, MINN.
MAR 6 1885
ASSESSMENTS PAID
Chapman
CITY TREASURER

J. L. Chapman
Deputy